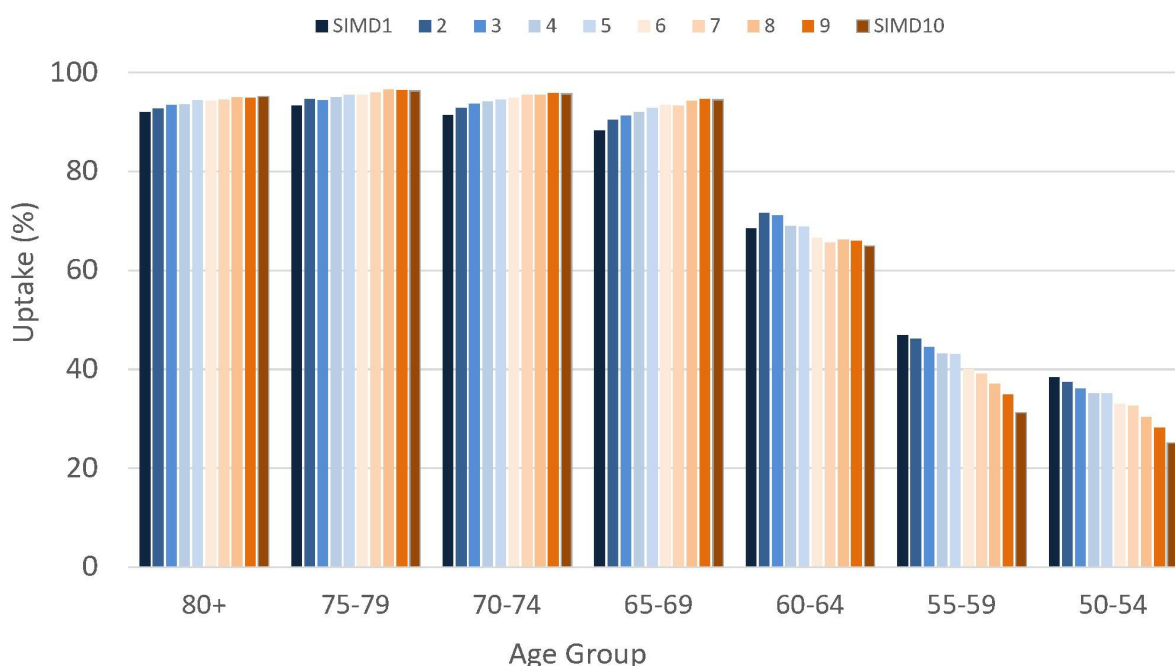


## Deprivation

Uptake of vaccination is higher in those in the least deprived areas for those aged 65 and over, and conversely, higher in the most deprived areas for those aged under 65 (see Figure 3, and Tables 23 and 24). The higher rates for the most deprived areas in the younger ages is likely to be due to a higher proportion of individuals from deprived areas having been invited for vaccination in priority groups due to being clinical vulnerable to COVID, rather than being a true reflection of higher uptake.

**Figure 3: Uptake of first dose of COVID-19 Vaccination as at 17 March 2021, by age group and SIMD decile. (1=Most Deprived, 10=Least Deprived)**



**Table 23: Uptake of first dose of COVID-19 Vaccination as at 17 March 2021, by age group and SIMD decile. (1=Most Deprived, 10=Least Deprived)**

Age Group	1	2	3	4	5	6	7	8	9	10
80+	92.0	92.7	93.4	93.6	94.4	94.3	94.5	95.0	94.9	95.2
75-79	93.3	94.6	94.4	95.0	95.4	95.4	95.9	96.5	96.4	96.3
70-74	91.4	92.8	93.7	94.1	94.5	94.8	95.4	95.5	95.8	95.7
65-69	88.3	90.4	91.3	92.0	92.8	93.4	93.3	94.2	94.6	94.5
60-64	68.5	71.6	71.1	69.0	68.9	66.5	65.6	66.2	66.0	64.9
55-59	46.9	46.1	44.5	43.1	43.0	40.1	39.1	37.0	34.9	31.2
50-54	38.4	37.4	36.1	35.1	35.1	33.0	32.6	30.4	28.2	25.1