

Covid-19 National Testing Programme Lord Bethell Update – Pillar 4 (15/04)

Pillar 4 – Plan

Pillar Lead	Catherine Byers (Lisa Keenaghan from 20/4), Tamsin Berry
Key delivery partners	NHS Blood Transfusion Service, Children's Hospitals (inc GOSH), PHE, Wellcome Trust, Pillar 3

Overview – Pillar 4 will put in place a **robust population surveillance programme**. It consists of three phases:

Phase 1 – NHS Blood Transfusion + GOSH

Approx. 1000 blood samples per week from healthy adults 18-70, and 200 blood samples per week from sick children.

Volume and region based on current PHE/Wellcome Trust modelling requirement. PHE capacity to test up to 7000 samples if required. Results will be provided to SPI-M and SAGE

Phase 2 – Biobank study

Target of **16k – 20k participants** of UK Biobank and non-cohabiting family members, with a sample taken every month for a least 6 months.

Results will be made accessible via UK Biobanks data platform (open to researchers through access application) and shared with SAGE

Phase 3 – ONS

Broader population survey with a sample representative of the general population, across all age groups.

Plus the **broader PHE surveillance programme** will also contribute to our population surveillance, and enrich the advice to SAGE

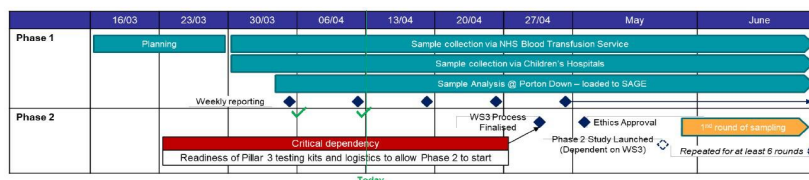
Pillar 3 & 4 likely to merge, led by Tamsin Berry

Update – Pillar 4 has made the following progress:

- **Phase 1/Blood Donor + GOSH samples** - 3000+ samples received by PHE Porton Down for processing in Phase 1 from NHS BT and GOSH sources.
- Tests received from London and the Midlands, w/c 12/4 will focus on Wales and London again.
- Results from first batch of tests are starting to emerge, fed into SAGE/SPI-M
- Work in progress to understand alternatives to WS 3 dependency working in conjunction with WS 5.
- **Phase 2/Biobank** – rescoping based on need for contingency, if hom test kits not viable. Updated milestones by 17/4.
- **Phase 3/ONS** – study design and operational arrangement in train. Survey due to start w/c 20th April

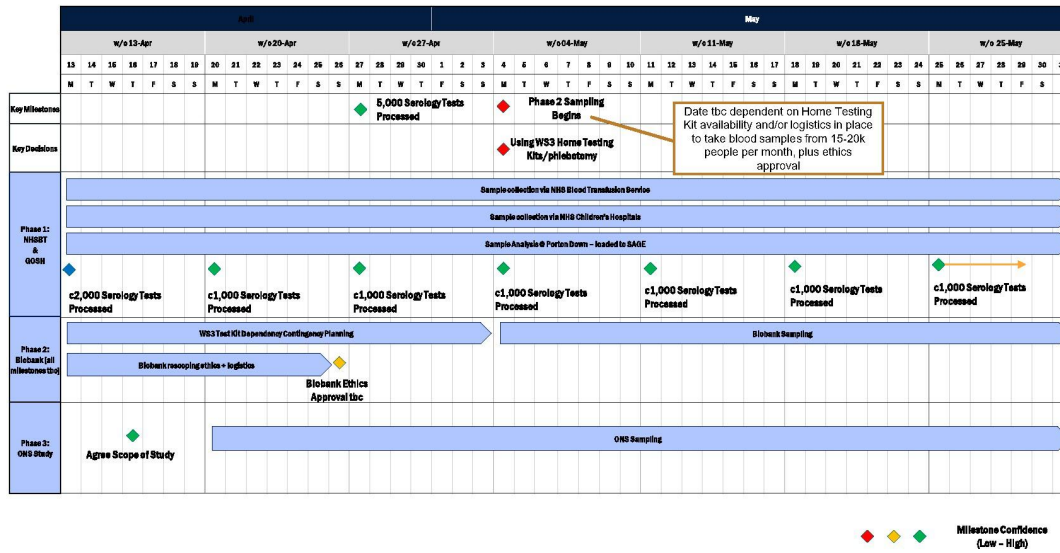
Risks and mitigations

- Risk that Pillar 3 testing kits and supporting logistics are unavailable to support Pillar 4. Exploring utility of Test Kits procured via PHE 'head to head' study. The need for underpinning logistics and digital solution persist; and
- Ethical approval not given in line with plan. Ongoing engagement with approvals community



OFFICIAL SENSITIVE

2



Comms events?

Pillar 4 – live issues

Description + owner	Update + next steps
ONS Study John Newton, PHE	Study scope and design being agreed. Current plan is: <ul style="list-style-type: none"> - ONS to deliver study, with clinical support from Iqvia for phlebotomy - Week 1 – samples from London - Oxford lab to run assay - John Newton, Jeremy Farrar and John Bell meeting ONS + DHSC Project team to sign off details on Thursday 16th - ONS Study sampling begins w/c 20th April
'Head to head' testing Sharon Peacock, PHE	Head to Head testing commenced , to explore whether home-testing-kits can be usefully deployed for population surveillance. Current situation is: <ul style="list-style-type: none"> - CIGA Health wondfo – 300 sent to Porton 9/4, tested 10/4 - Biozen – 300 sent to Porton 14/4, tested asap - Ciga AllTest – main batch of kits still at border in China. FCO pushing Beijing to release. CO Commercial trying to get hold of a smaller batch to send to Porton - Orient Gene rapid test cassette – all test-kit-samples we had were used by Oxford lab. CO commercial trying to acquire more via supplier (and/or Welsh Govt who have ordered these) - PHE to share analysis and underpinning data asap to inform decisions on Biobank study
Accelerating Biobank NR Wellcome I&S I&S DHSC	- Wellcome and Biobank discussed contingency plans to carry out Biobank study using blood samples (if head to head testing does not identify a home-testing-kit solution) - Biobank are rescoping ethics, sample logistics (phlebotomy and transport), updated plan 17/4
NHSBTS/GOSH study Jeremy Farrar, Wellcome	- Jeremy Farrar & Sharon Peacock have a Serology group that meets weekly to analyse the results from PHE population surveillance - Jeremy/Sharon will be able to update you on initial findings from the group - Comms strategy for how and when we publish these results tbagreed asap & cleared with Ministers
Other Pillar 4 issues I&S /Lisa Keenaghan	- Today's webinar will focus on antibody testing - Paper due from SAGE via Sharon on immunity - Update for SoFS on Pillar 4 – timing tbc - Watching brief on overlaps between Pillar 3 Taskforce, and broader groups eg UKRI

OFFICIAL SENSITIVE

4