

<div>Prime Minister's Briefing - 30th October 2020</div> <div></div>	<div>Local alert levels: weekly detected cases per 100k population</div> <div>494.84404.14▲</div> <div>15-Oct</div>	<div>Local Authority Watchlist areas: In-store card spending</div> <div></div> <div>11-Oct</div>	<div>E&W: Daily new COVID-19 hospital admissions</div> <div>1,2731,032▲</div> <div>20-Oct</div>
<div>UK: Daily COVID-19 deaths in all settings</div> <div>280189▲</div> <div>21-Oct</div>	<div>Local alert levels: positivity rate</div> <div>15.64%15.52%▲</div> <div>19-Oct</div>	<div>International: Weekly cases per 100,000</div> <div></div> <div></div>	<div>England: Daily new COVID-19 hospital admissions by region</div> <div></div> <div>27-Oct</div>
<div>England: People with active virus (Est.)</div> <div>568k447k▲</div> <div>16-Oct</div>	<div>Positivity P1 & P2</div> <div></div> <div></div>	<div>International: Weekly Covid related hospital admissions per 100,000</div> <div></div> <div></div>	<div>England: COVID-19 patients in hospital by region</div> <div></div> <div>29-Oct</div>
<div>England: Daily new cases from testing, compared to ONS and KCL/ ZOE estimates for the number of daily new cases</div> <div></div> <div>16-Oct</div>	<div>Number of Positive Tests P1 & P2</div> <div></div> <div></div>	<div>International: regional case rates</div> <div></div> <div></div>	<div>England: All beds (V, O+, O) occupied by region</div> <div>84%NEW</div> <div>29-Oct</div>
<div>England: cases, hospital admissions, ventilator beds and deaths by region</div> <div></div> <div></div>	<div>Number of Tests P1 & P2</div> <div></div> <div></div>	<div>E&W: Daily new COVID-19 hospital admissions</div> <div>1,2731,032▲</div> <div>20-Oct</div>	<div>England: Ventilator bed occupancy as a percentage of all V-beds by STP</div> <div></div> <div>27-Oct</div>
<div>England: ONS Estimate of Doubling Time</div> <div></div> <div></div>	<div>Daily cases per 100k for ages 60 plus by region</div> <div></div> <div>10-Oct</div>		
<div>England: Weekly new cases and hospital admissions per 100k by age group</div> <div></div> <div></div>	<div>UK: Time spent outside residential area</div> <div>109%110%▼</div> <div>21-Oct</div>		
<div>UK: Case rate by Local Authority</div> <div>216.58</div> <div>23-Oct</div>	<div>City Centres: Impact of the 10pm curfew and new tiering system on hourly visitor trends</div> <div></div> <div></div>		

Prime Minister's Briefing - 30th October 2020.

B-00

Agenda

1. Dashboard update

(a) National

(b) Local

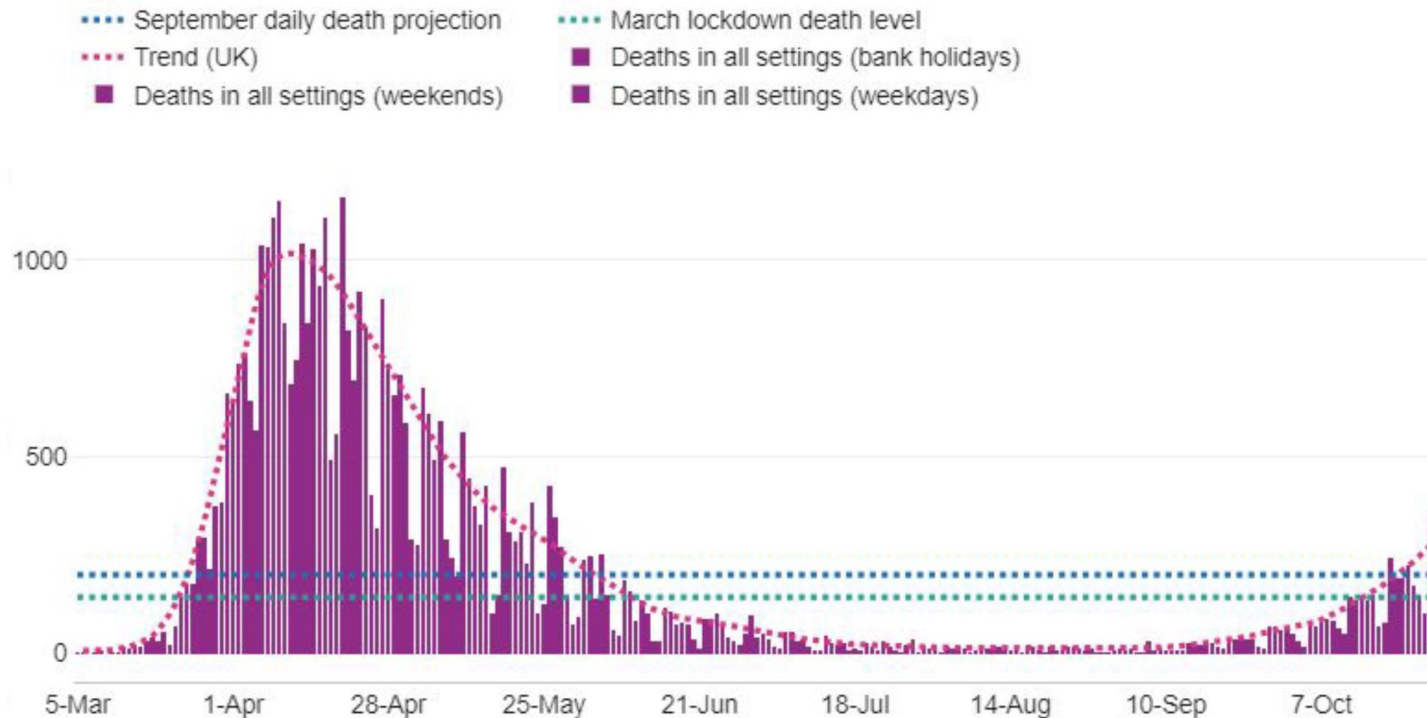
(c) Tier 3 impacts

2. NHS situation and projections

UK: Daily COVID-19 deaths in all settings. The number of deaths increased by 91 from 21-Oct. The cumulative number of deaths is 45,766.

MODERATE CONFIDENCE The new daily measure provides a UK-wide count of deaths under a consistent methodology for England, Northern Ireland, Scotland and Wales that has been endorsed by an external review.

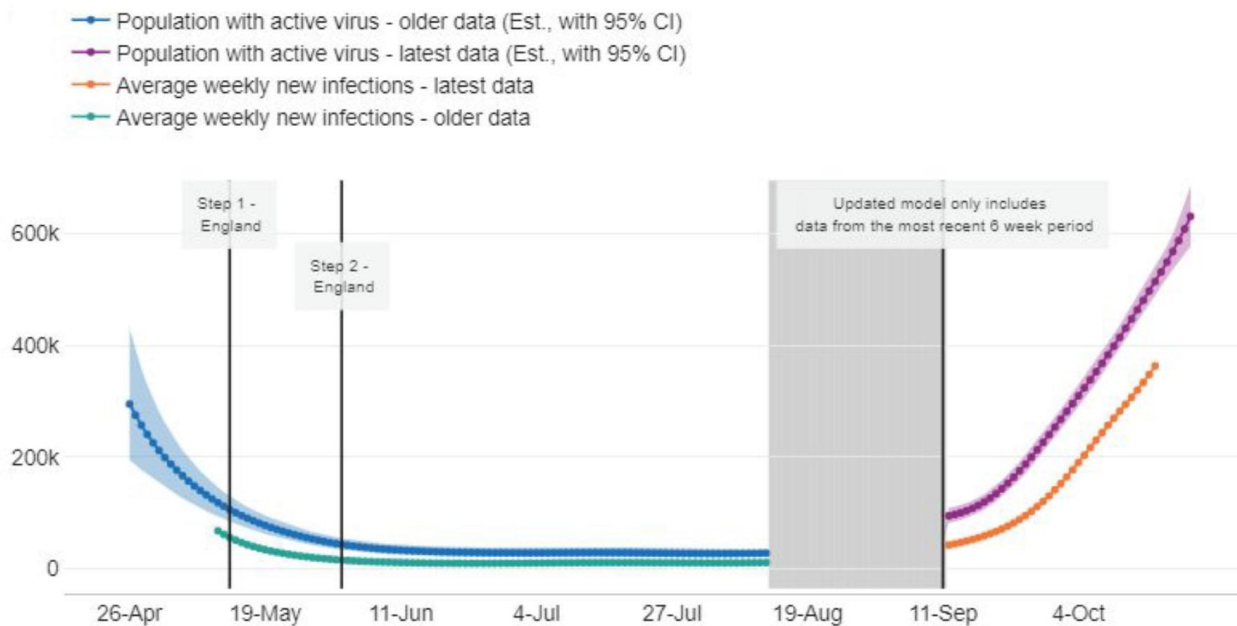
B-01 Data last updated 16:45, 29-Oct



England: People with active virus (Est.). The latest ONS survey suggests there is evidence that the rates of those testing positive for COVID-19 has increased rapidly in recent weeks. 1 in 100 people in the community are estimated to have had COVID-19 during the most recent week.

HIGH CONFIDENCE High confidence that true number is within the credible intervals. Point estimate subject to revision. The population tested for this survey was specifically selected to represent the overall England population. This estimate is based on household testing, and weighting based on characteristics, with no testing in care homes and hospitals.

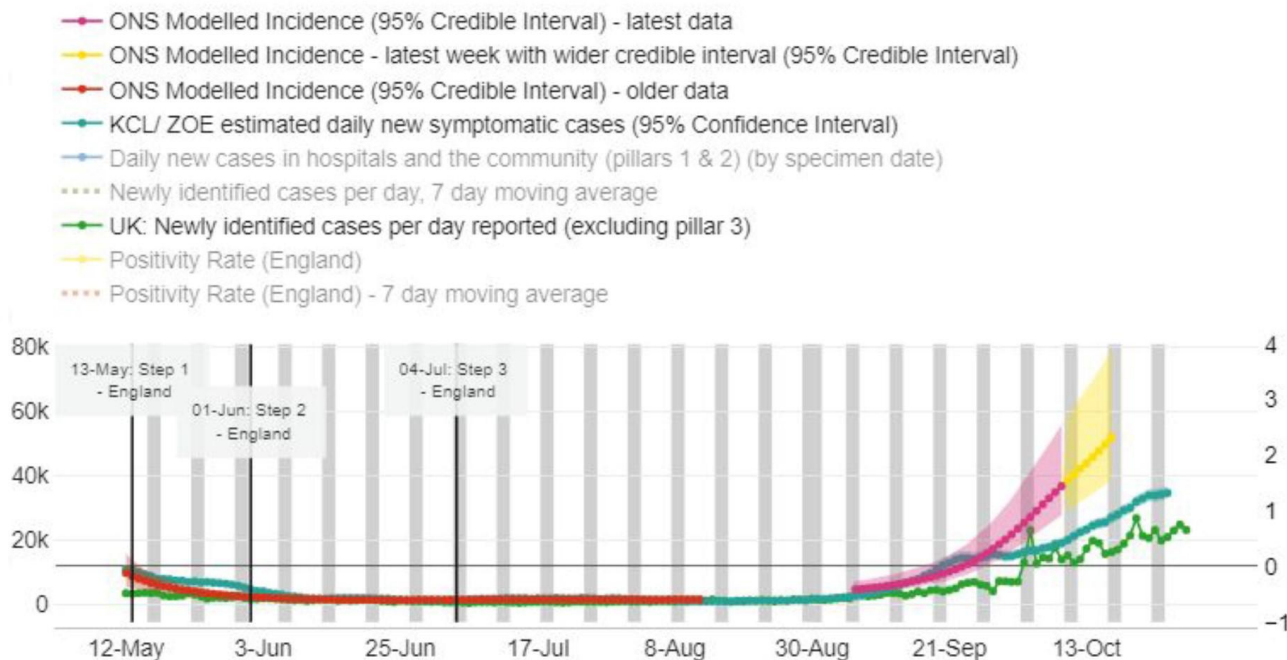
B-02 Data last updated 14:30, 29-Oct



England: Daily new cases from testing, compared to ONS and KCL/ ZOE estimates for the number of daily new cases. On 16-Oct, 17,719 cases were confirmed through testing in hospitals and the community. ONS modelling estimates there were 49,700 new cases in England on the same day, whereas the King's College London/Zoe symptom tracking app estimated there were 25,410 new cases in England that day.

MODERATE CONFIDENCE

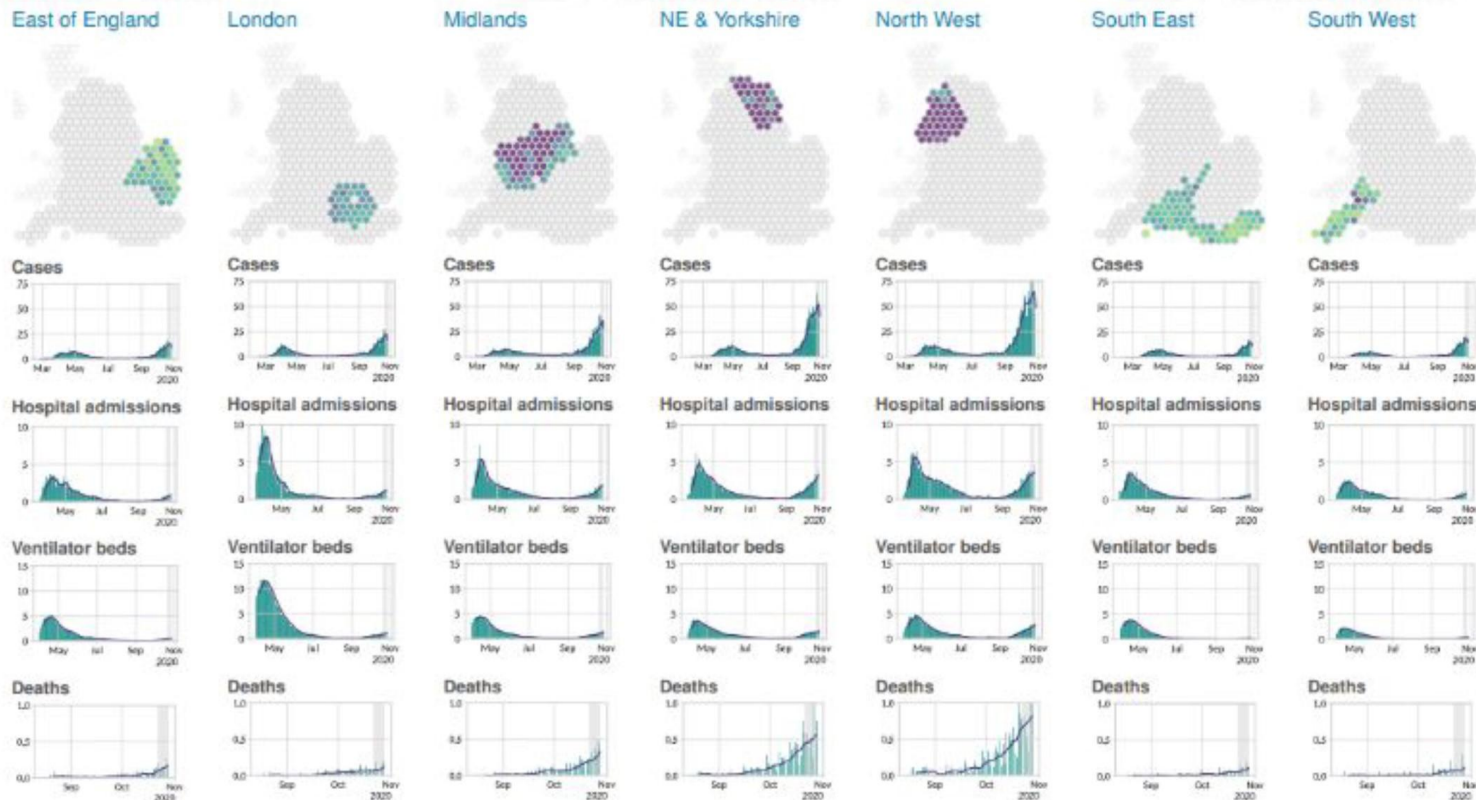
B-03 Data last updated 09:30, 30-Oct



England: cases, hospital admissions, ventilator beds and deaths by region

HIGH CONFIDENCE

B-04 Data last updated 09:36, 30-Oct



England: ONS Estimate of Doubling Time

HIGH CONFIDENCE

B-05 Data last updated 09:55, 30-Oct

Region	Doubling time (days)
England	17
North East	27
North West	15
Yorkshire and the Humber	15
London	18
West Midlands	12
East Midlands	12
East of England	16
South West	18
South East	14

England: Weekly new cases and hospital admissions per 100k by age group. Up to the 23-Oct, the weekly case incidence was highest among 17-24 year olds with 415.32 cases per 100,000. Since the 18-Jul, the incidence rate has remained the highest among 17-24 year olds.

MODERATE CONFIDENCE New data set

B-06 Data last updated 14:00, 28-Oct

Combined Pillar 1 and 2 Cases per 100k ▼

80+	9	10	11	13	11	7	8	17	24	25	34	53	86	116	162
60-79	5	5	5	6	7	5	6	11	17	19	33	52	82	105	144
40-59	7	9	10	10	12	11	11	23	35	43	68	98	151	182	257
31-39	10	11	13	14	18	16	18	30	46	52	83	110	166	196	282
25-30	11	13	14	16	22	23	26	41	56	58	99	135	197	229	310
17-24	10	13	15	17	23	26	34	56	74	73	154	415	572	445	415
11-16	3	5	5	5	7	6	7	12	23	34	54	66	95	117	174
5-10	4	3	4	3	5	4	5	8	20	20	22	23	37	52	71
0-4	3	3	4	5	6	5	5	8	13	14	24	35	49	54	70
	17 Jul	24 Jul	31 Jul	7 Aug	14 Aug	21 Aug	28 Aug	4 Sep	11 Sep	18 Sep	25 Sep	2 Oct	9 Oct	16 Oct	23 Oct

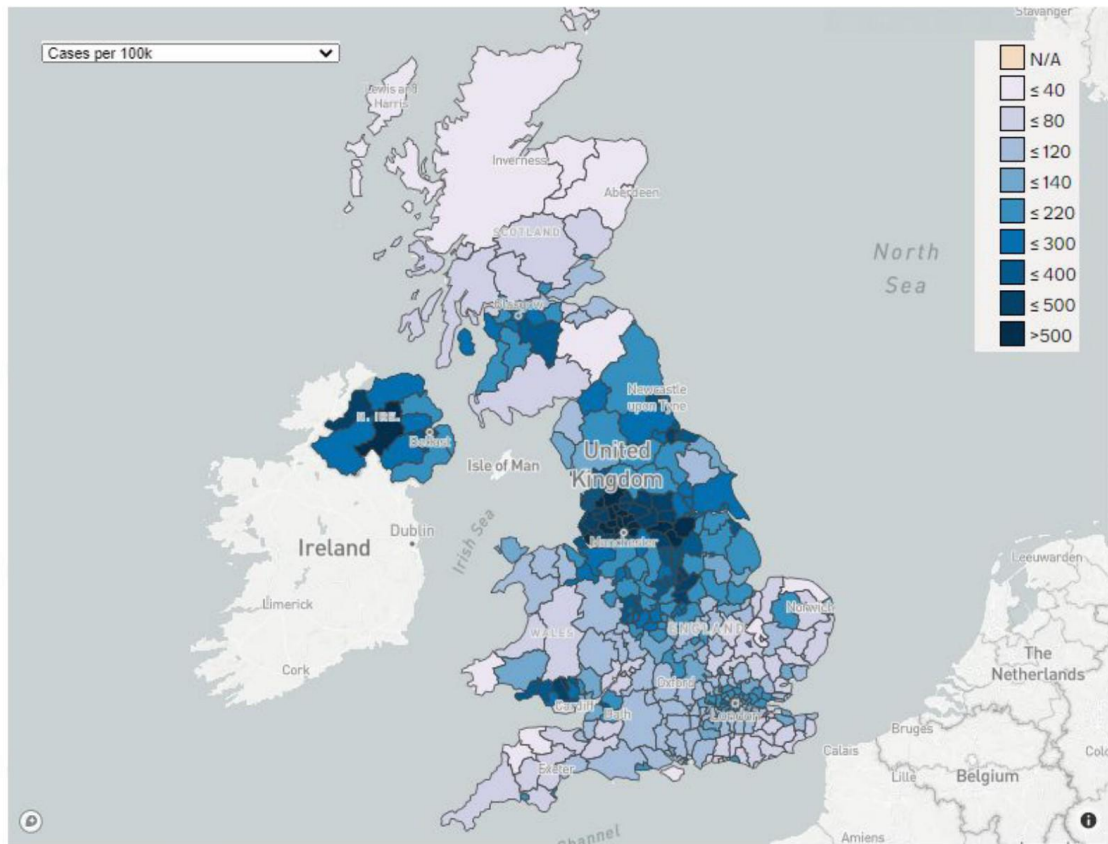
UK: Case rate by Local Authority. The weekly case rate in the UK is 216.58 per 100,000, with the highest case rate in Blackburn with Darwen at 791.60 per 100,000.

HIGH CONFIDENCE

Cabinet Office

 Cabinet Office

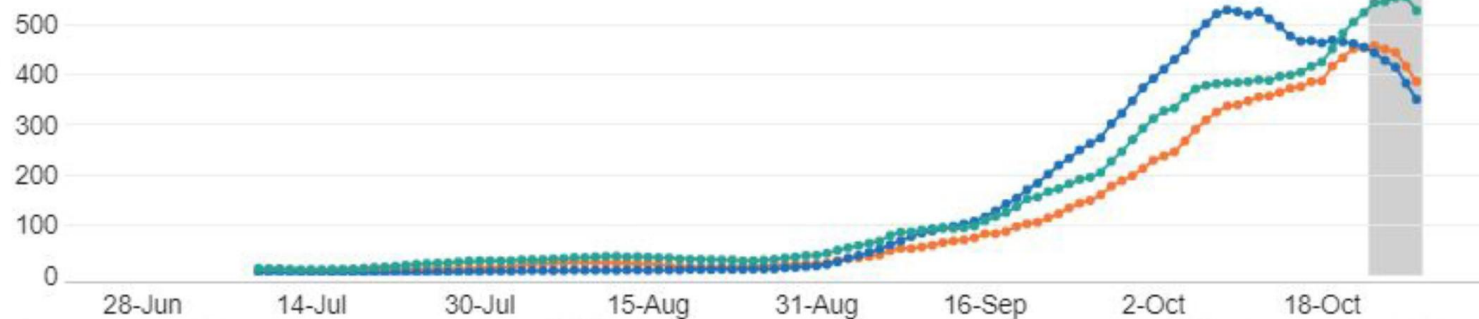
B-07 Data last updated 16:40 29-Oct



Local alert levels: weekly detected cases per 100k population. The case rate in Tier 3 areas is 494.84 per 100,000, an increase from 404.14 per 100,000 the week prior.

MODERATE CONFIDENCE

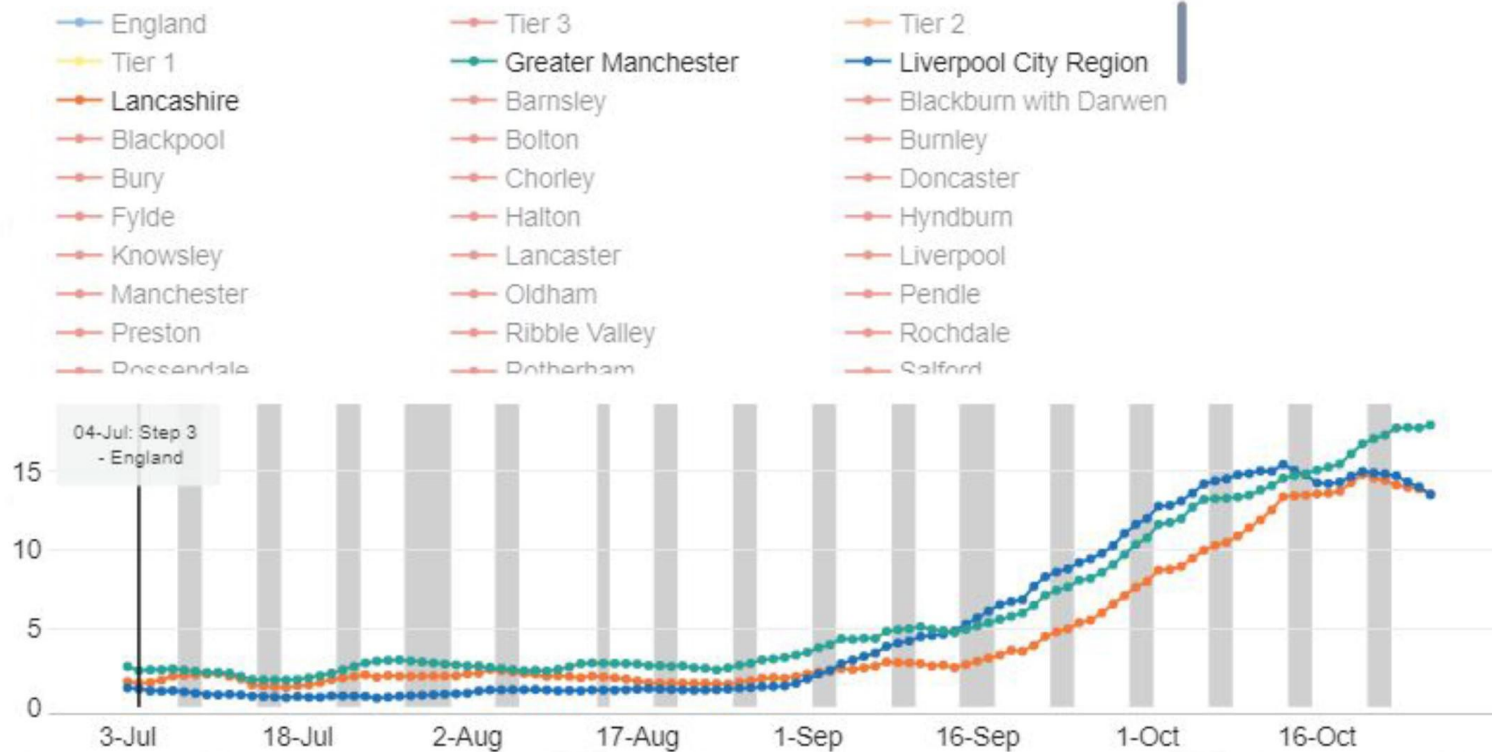
B-08 Data last updated 16:40, 29-Oct



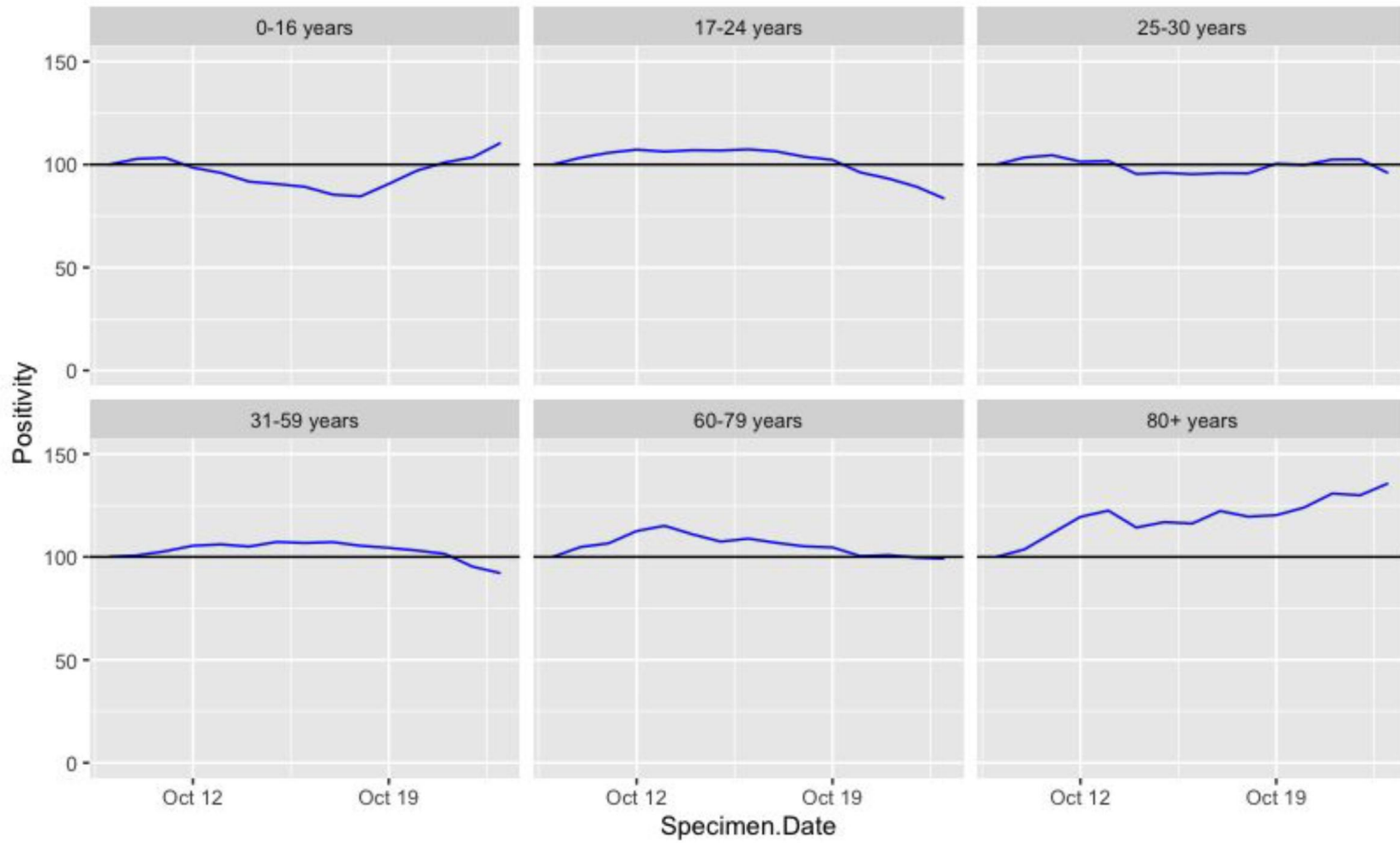
Local alert levels: positivity rate. The positivity rate in the Tier 3 areas is 15.64%, a increase from 15.52% one week prior.

MODERATE CONFIDENCE Moderate

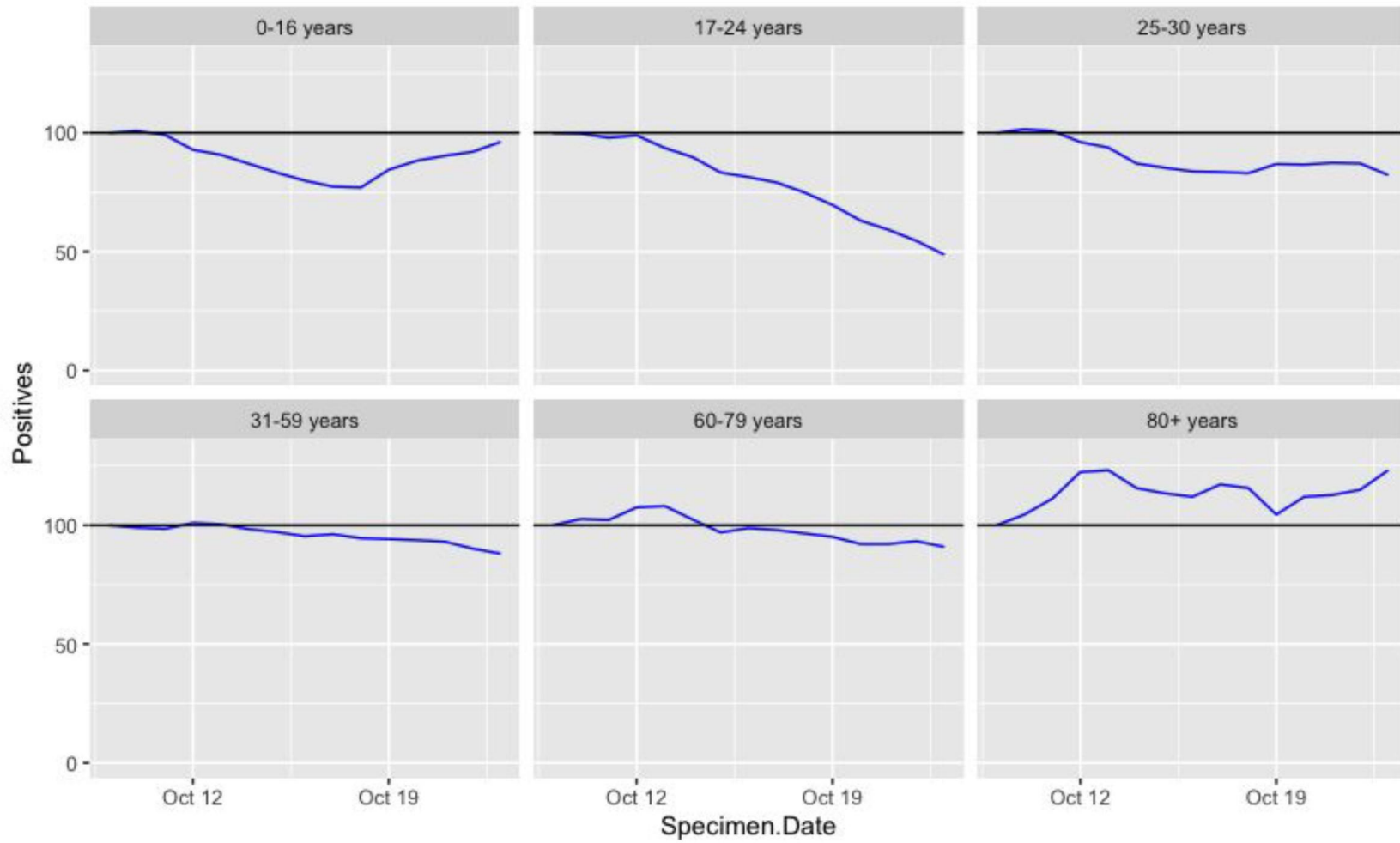
B-09 Data last updated 16:40, 29-Oct



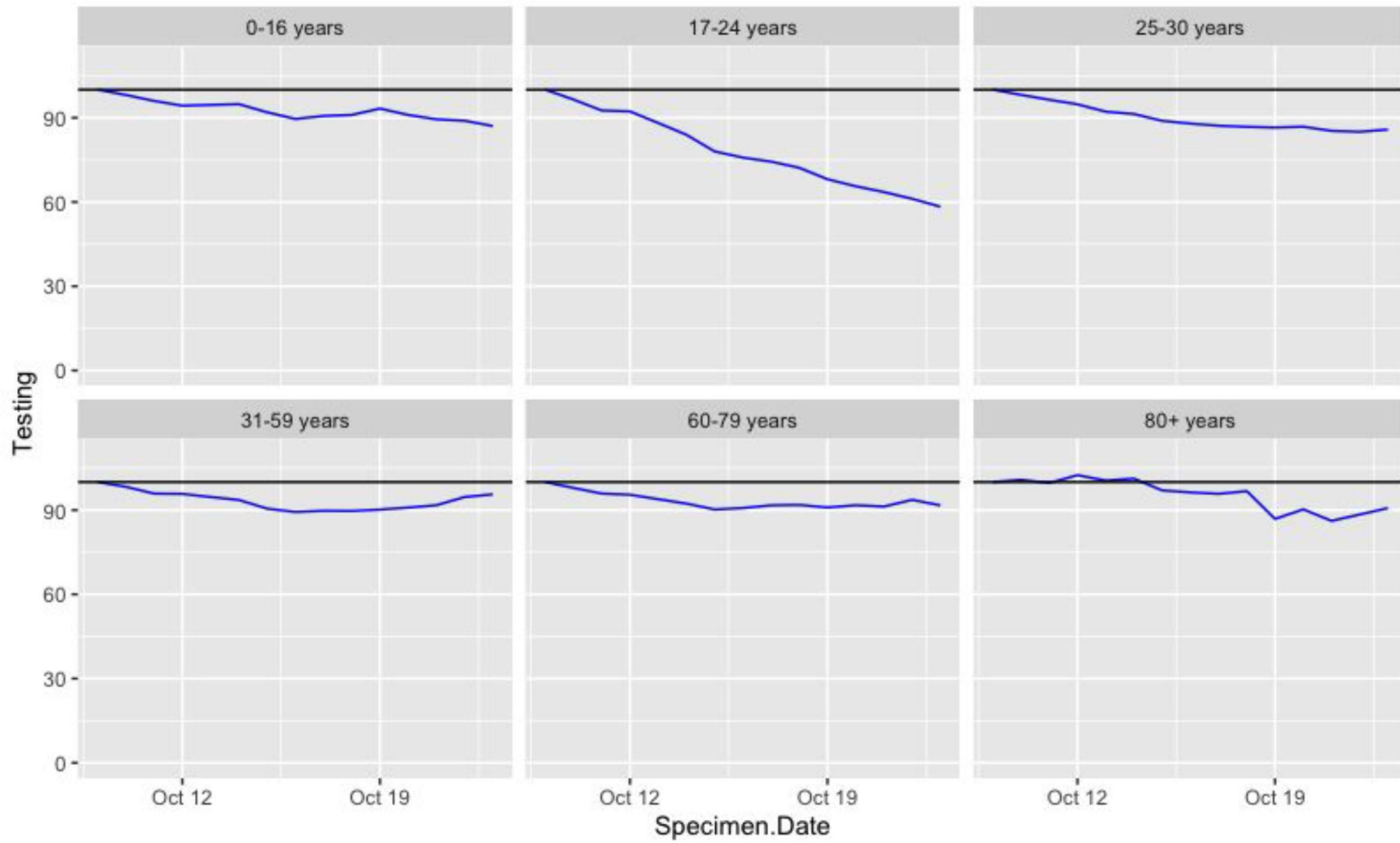
Positivity P1 & P2



Number of Positive Tests P1 & P2



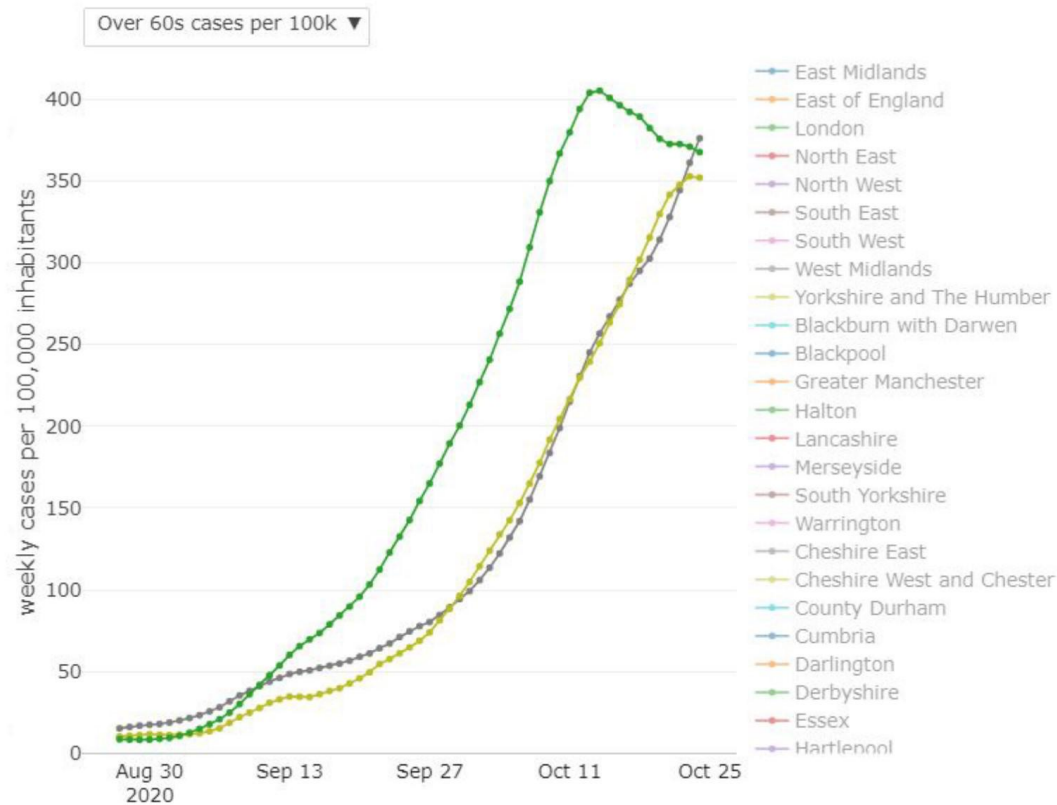
Number of Tests P1 & P2



Daily cases per 100k for ages 60 plus by region. On the 24th of October, the weekly cases in over 60 year olds per 100,000 inhabitants over 60 was 149 in England and 370 in areas falling under Tier 3 restrictions.

MODERATE CONFIDENCE

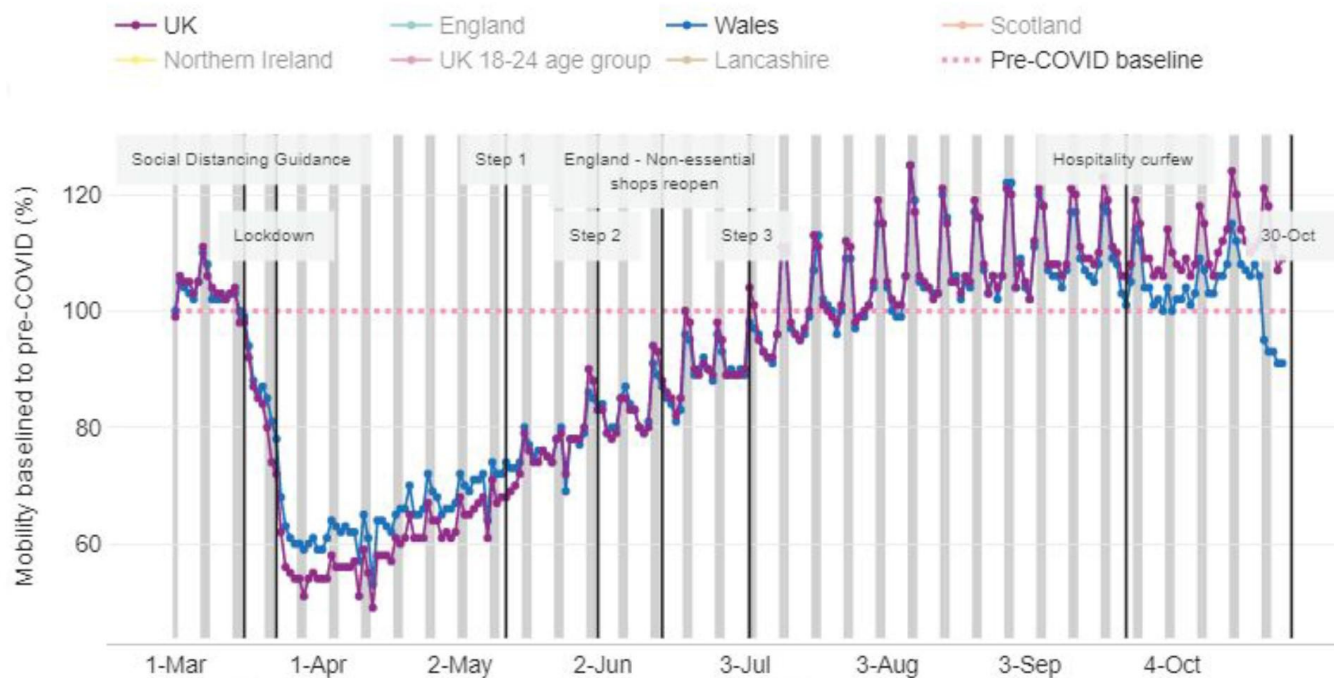
B-13 Data last updated 15:00, 29-Oct



UK: Time spent outside residential area. Mobility in the UK has been steadily increasing since Step 1. However, there has been a very slight decrease in mobility since the introduction of curfew on 24-Sep. Since 'firebreaker' in Wales on 23-Oct, mobility has fallen below pre-COVID levels for the first time in three months.

HIGH CONFIDENCE Existing administrative dataset, however only contract holders (<50% of customers) are accounted for.

B-14 Data last updated 10:00, 26-Oct

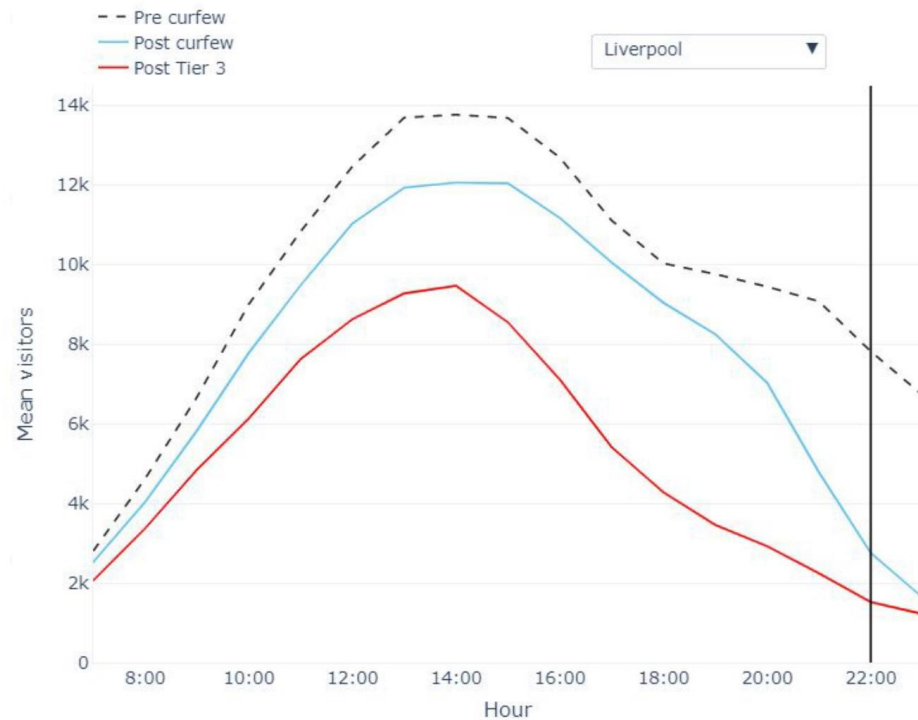


City Centres: Impact of the 10pm curfew and new tiering system on hourly visitor trends.

Analysis of weekends pre and post the hospitality curfew on 24-Sep suggests visits to city-centres and entertainment districts have decreased at nighttime (with some displacement to day-time). Liverpool, Manchester and Sheffield have seen a reduction of city centre visits since the regions entered Tier 3 (on 14-Oct, 23-Oct and 24-Oct, respectively).

HIGH CONFIDENCE Existing administrative dataset, however only contract holders (<50% of customers) are accounted for.

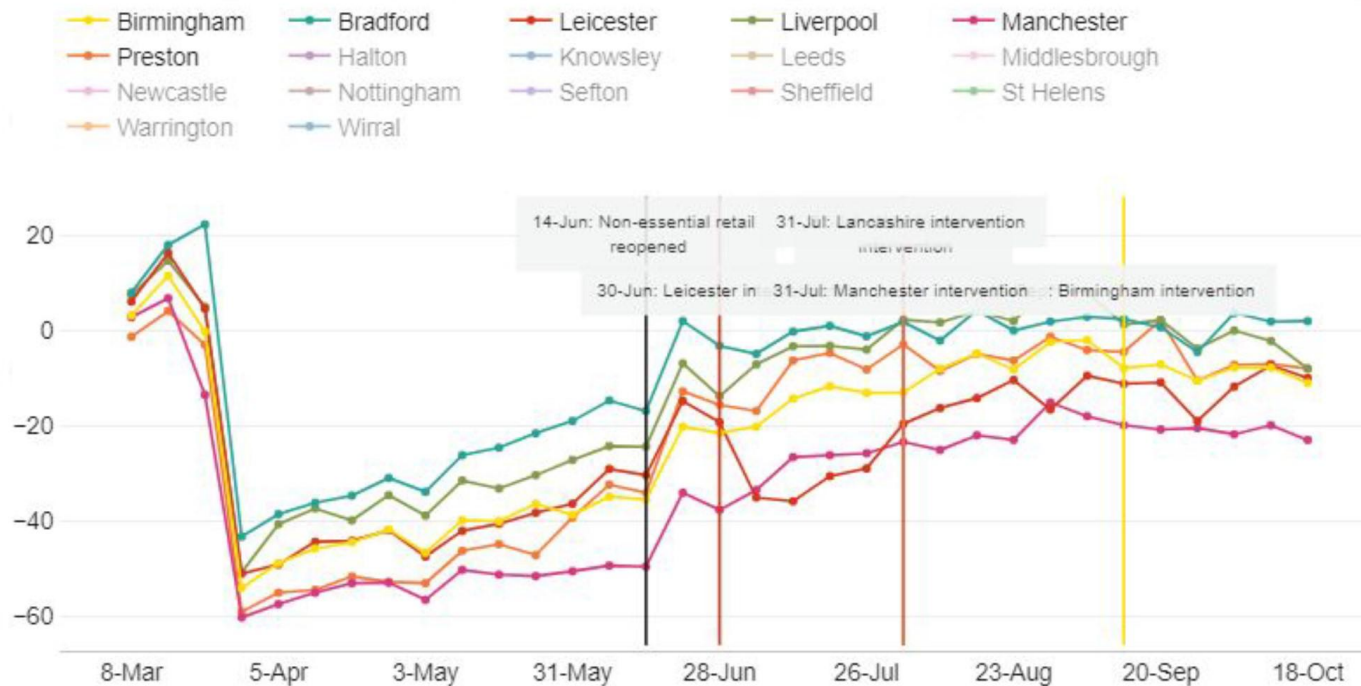
B-15 Data last updated 18:05, 27-Oct



Local Authority Watchlist areas: In-store card spending. In-store card spending in Leicester fell following the closure of non-essential retail, part of the package of local interventions which took effect from 30 June. In-store card spending has been broadly stable in areas where local interventions have not required the closure of non-essential retail.

MODERATE CONFIDENCE ONS processing a reliable but new data source.

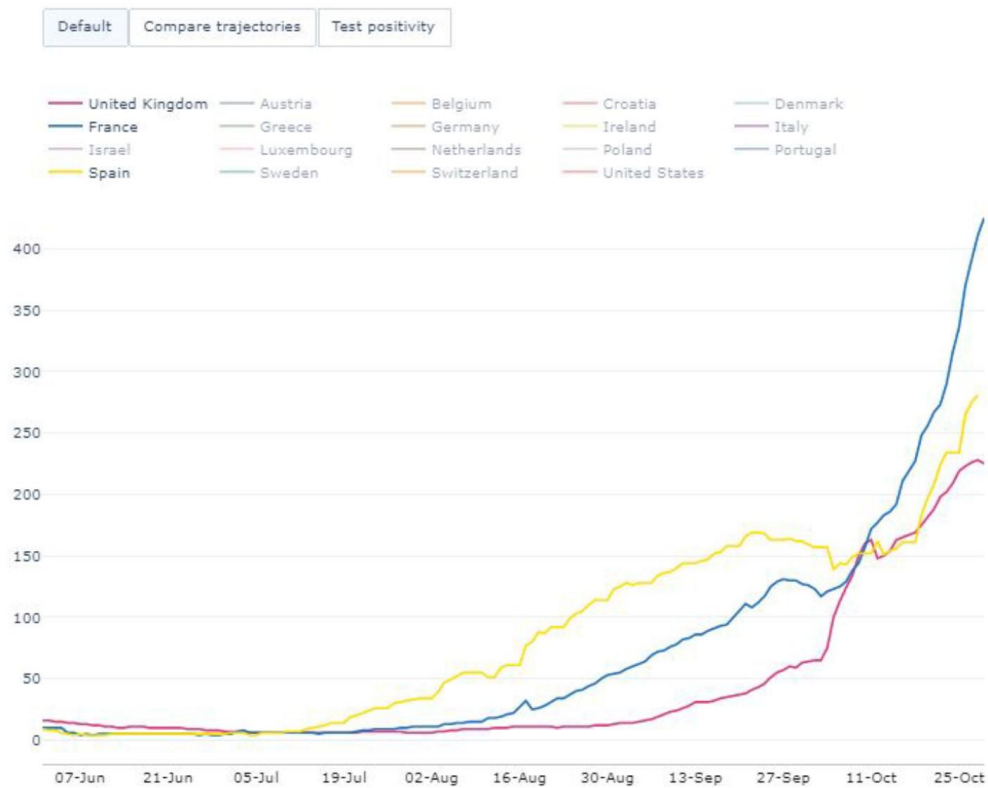
B-16 Data last updated 19:15, 19-Oct



International: Weekly cases per 100,000. 7-day rolling average. Much of Europe continues to see an increase in the number of cases.

LOW CONFIDENCE International reporting differs significantly in terms of the comprehensiveness and timeliness of reported tests, so comparisons are not like-for-like.

B-17 Data last updated 11:00, 30-Oct



International: Weekly Covid related hospital admissions per 100,000. Rolling weekly hospital admissions are continuing to follow an upward trajectory in the UK, France and Spain. The UK sees a higher number of Covid related hospital admissions than France and Spain at similar times in their outbreaks.

LOW CONFIDENCE International Official statistics, but historically subject to significant revisions. International reporting differs between countries and sources.

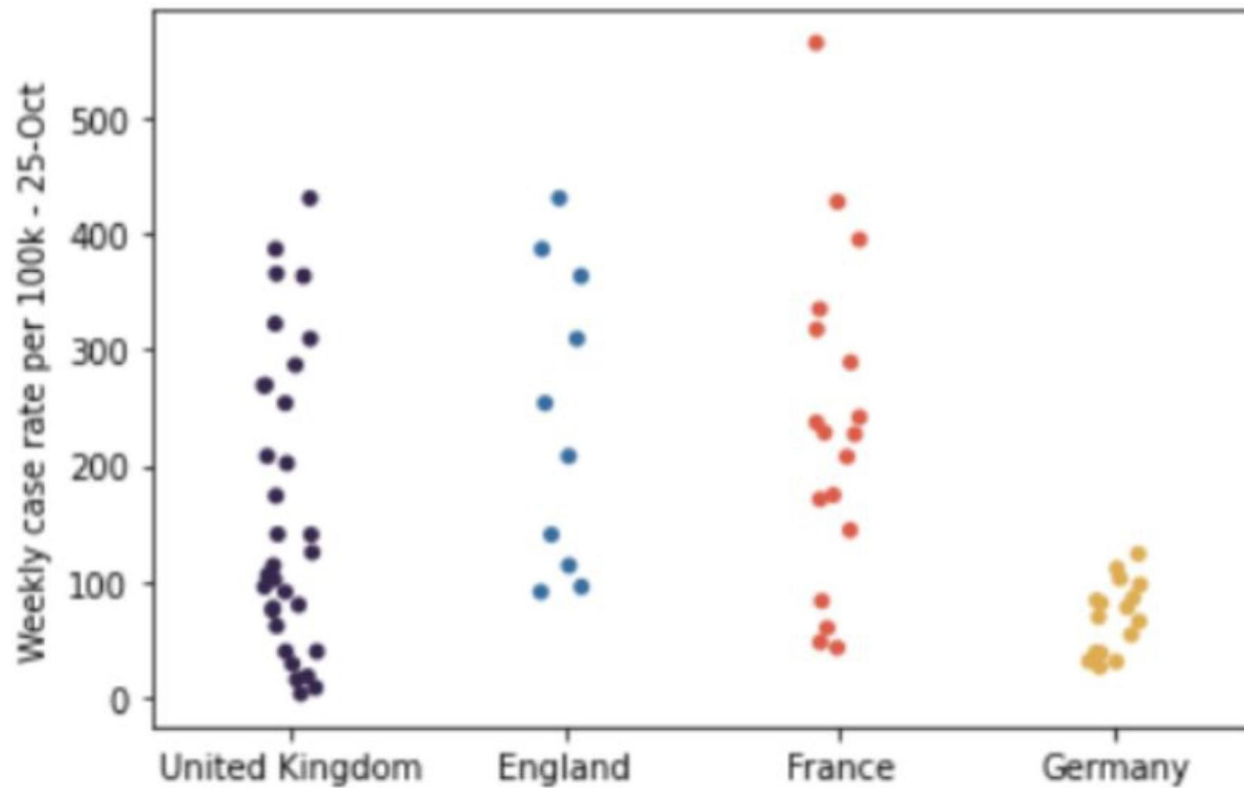
B-18 Data last updated 13:46, 28-Oct



International: regional case rates. Case rates in subnational regions: each point shows the case rate in a region within the country.

HIGH CONFIDENCE

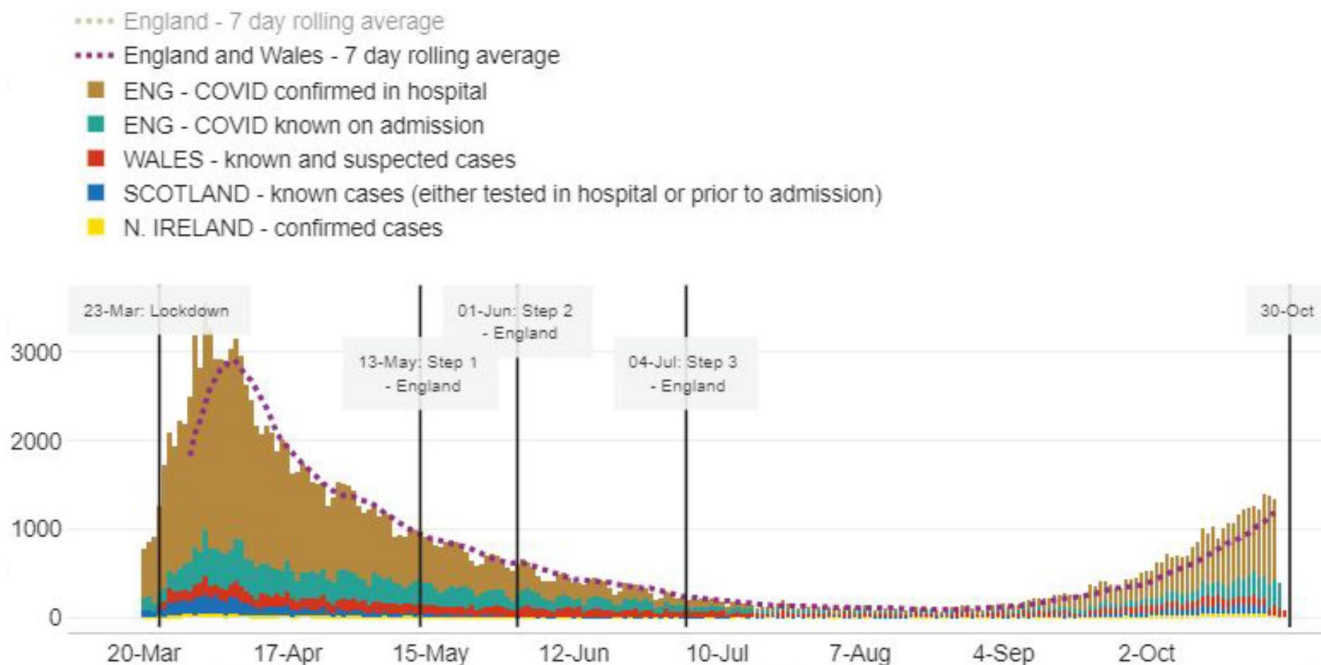
B-19 Data last updated 09:36, 30-Oct



E&W: Daily new COVID-19 hospital admissions. On 27-Oct there were 1,273 new hospital admissions of patients with COVID-19 in England and Wales. This is an increase of 23% over the same day one week before. Northern Ireland and Scottish data is lagged and excluded from this total, but represented in the graph.

MODERATE CONFIDENCE Shows an estimate of the number of COVID-19 admissions. Patients diagnosed in hospital with COVID-19 in the last 24 hours are added to the previous day.

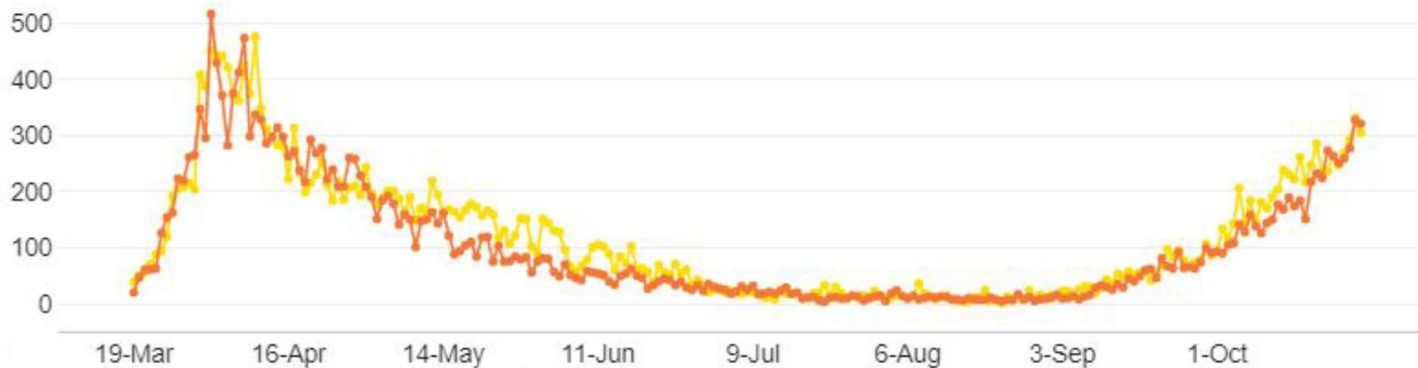
B-20 Data last updated 16:56, 29-Oct



England: Daily new COVID-19 hospital admissions by region. The North East and North West have the highest number of COVID-19 hospital admissions.

MODERATE CONFIDENCE Shows an estimate of the number of COVID-19 admissions. Patients diagnosed in hospital with COVID-19 in the last 24 hours are added to the previous day.

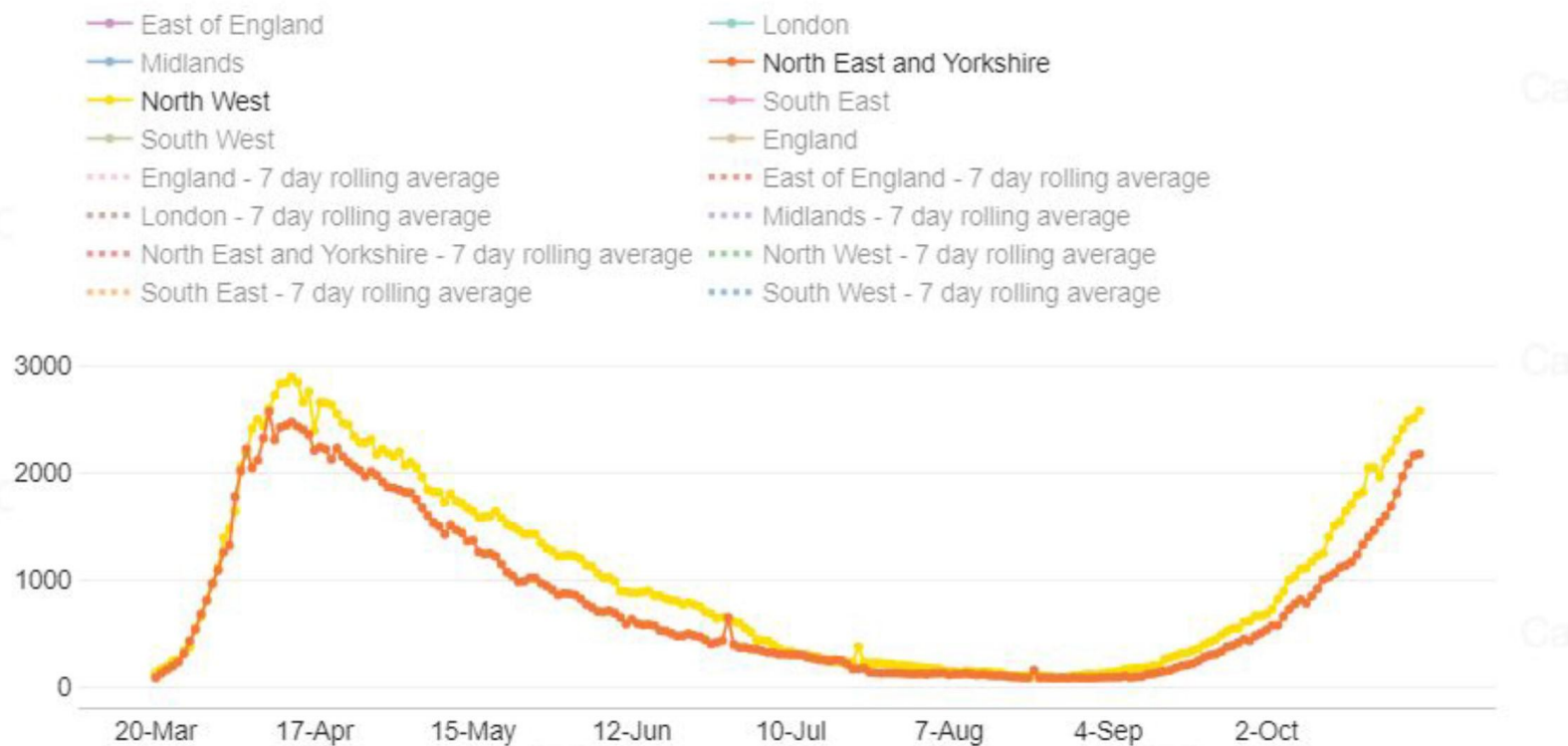
B-21 Data last updated 17:23, 29-Oct



England: COVID-19 patients in hospital by region. The North East and North West have the highest number of COVID-19 patients in hospital.

MODERATE CONFIDENCE Shows an estimate of the number of COVID-19 patients in hospital each day.

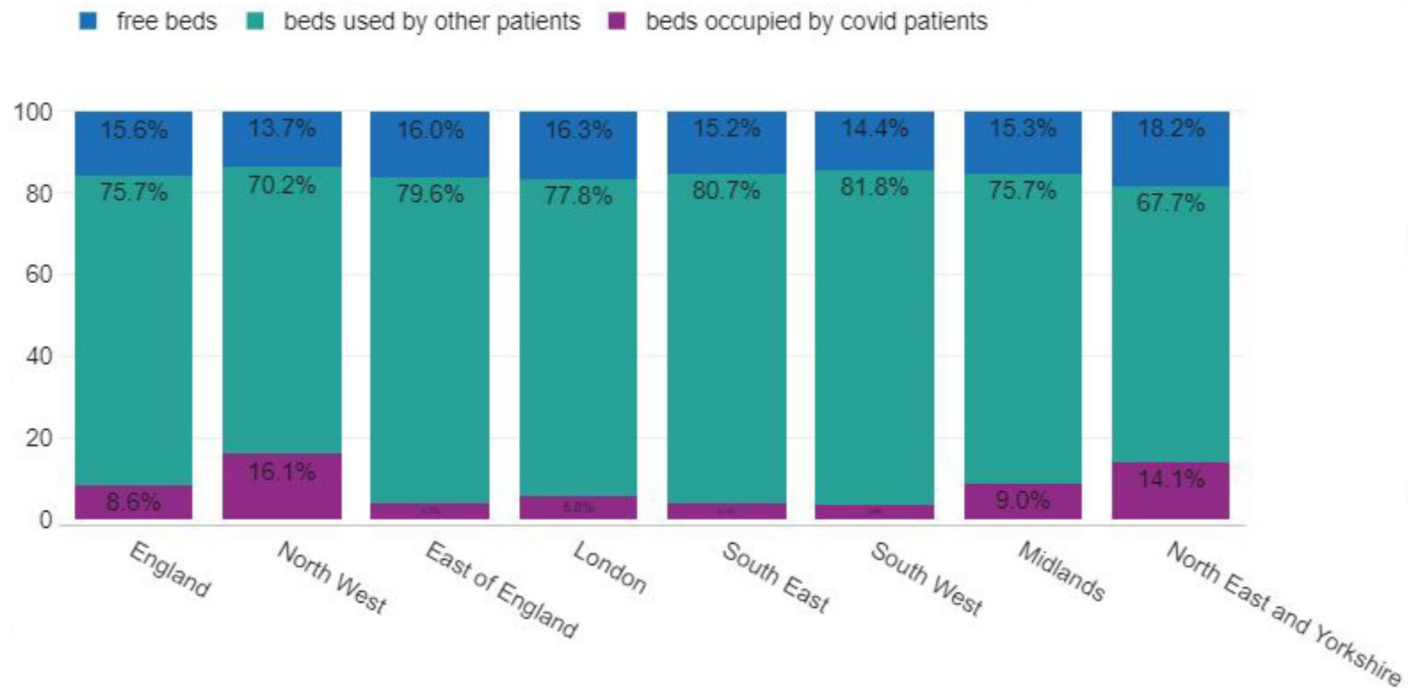
B-22 Data last updated 17:45, 29-Oct



England: All beds (V, O+, O) occupied by region. The North West has the highest percentage of COVID-occupied beds, but the percentage of unoccupied beds are similar across the regions. On 29th October, in England, 84.4% of beds were occupied (COVID and non-COVID).

MODERATE CONFIDENCE New data set constructed by NHS for COVID-19 response which includes all providers.

B-23 Data last updated 17:26, 29-Oct



England: Ventilator bed occupancy as a percentage of all V-beds by STP. Staffordshire and Stoke on Trent is the STP with the highest rate of total ventilator bed occupancy at 100%.

HIGH CONFIDENCE New data set constructed by NHS for COVID-19 response which includes all providers

Cabinet Office

Cabinet Office

B-24 Data last updated 09:11, 30-Oct

