

OFFICIAL: SENSITIVE

Draft document for discussion purposes
only – not government policy



Department
of Health &
Social Care

NHS COVID-19 App Handover Document

Created by: Simon Thompson

09th October 2020

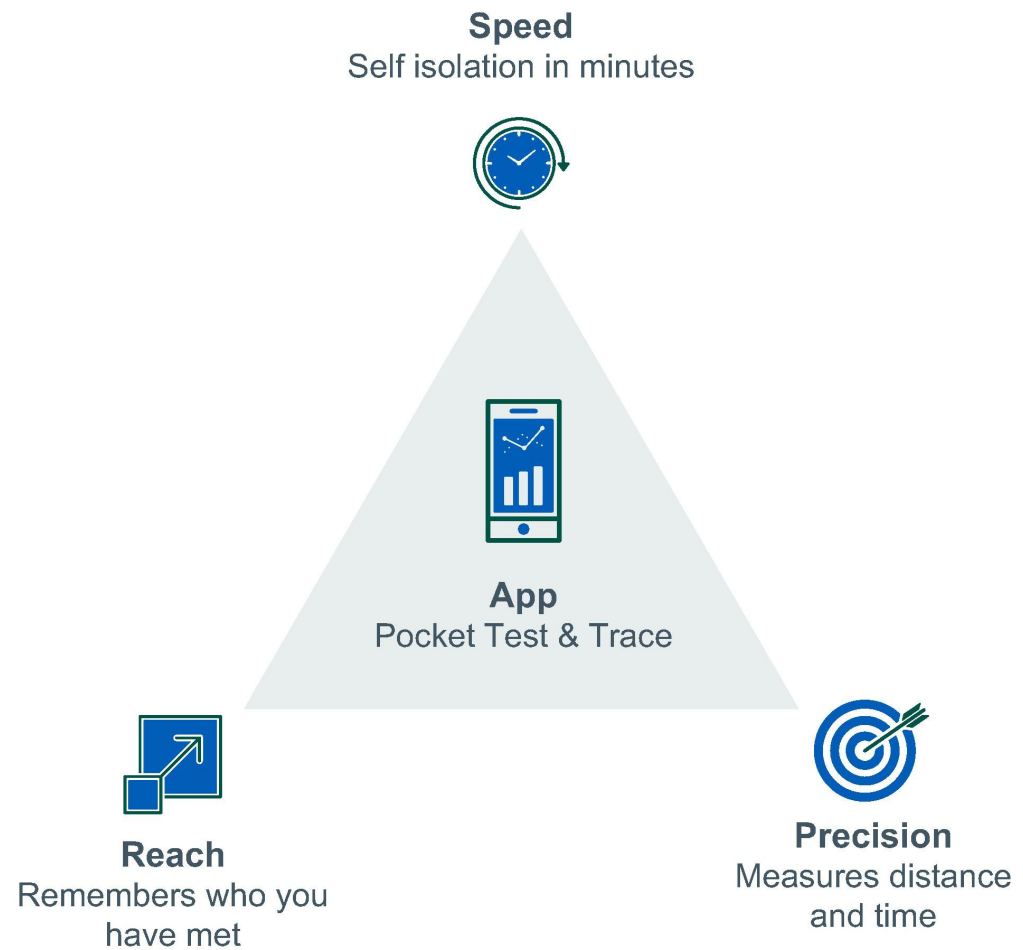
OFFICIAL SENSITIVE:

Document is for the formulation of government policy and should not to shared beyond App Team.

Test & Trace App

Role of the App

Speed
Precision
Reach



Test and Trace App

App Vision

Pocket Test & Trace

Maximum Freedom at Minimum Risk



Test and Trace

Six user benefiting capabilities that will encourage mass download and daily use.
Providing “maximum freedom at minimum risk”

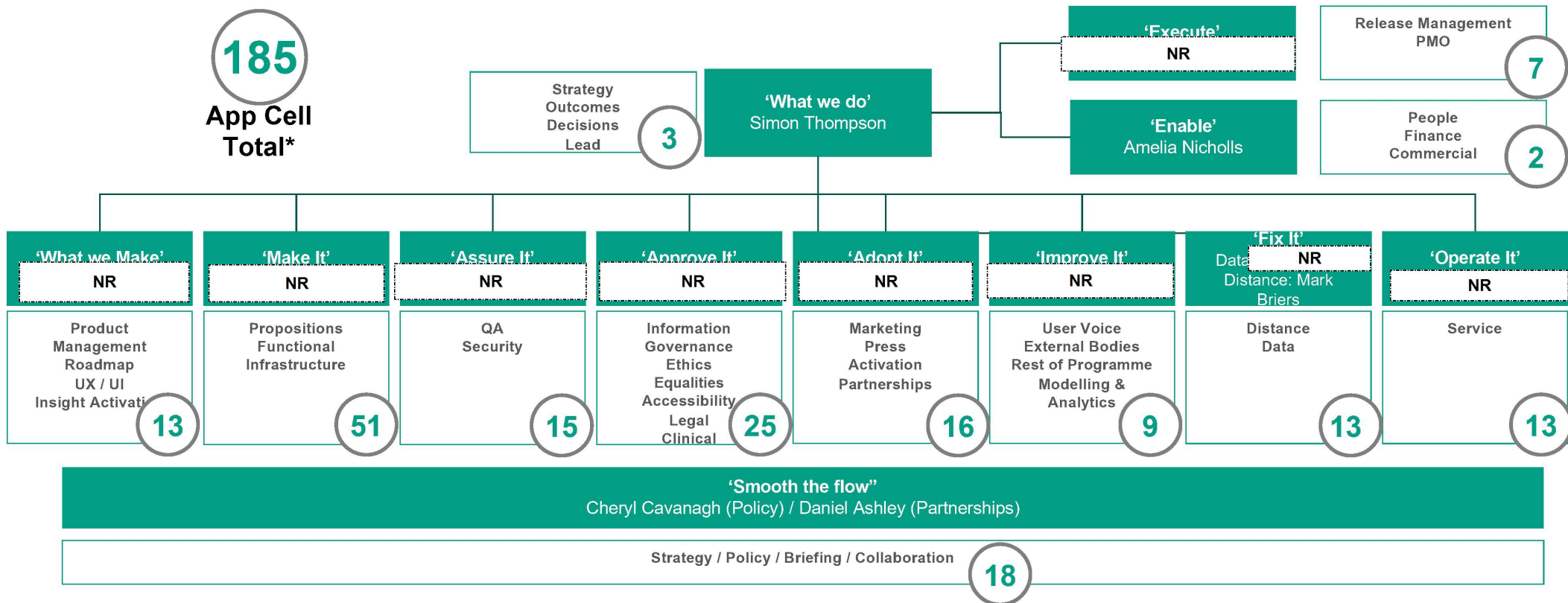


OFFICIAL SENSITIVE:

Document is for the formulation of government policy and should not be shared beyond App Pillar
Steering Committee membership.

COVID 19 App Organisation

(CS) = Civil Servant
(C) = Contractor
(A) = Accenture
(Z) = Zuhlke
(Ps) = Psephos
(HC) = Helecloud



Department of Health & Social Care

OFFICIAL SENSITIVE:

Document is for the formulation of government policy and should not be shared beyond App Pillar Steering Committee membership.

* Total does not include resources from the Devolved Administrations or Unassigned resources

INQ000575876_0034