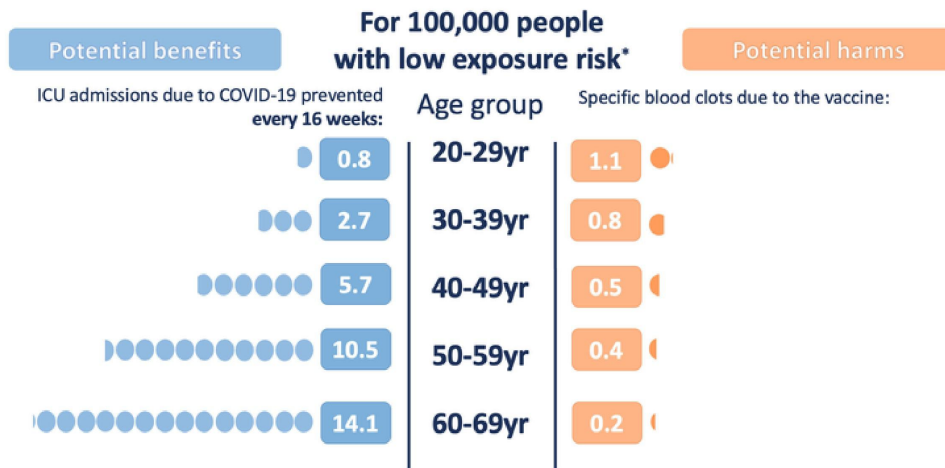


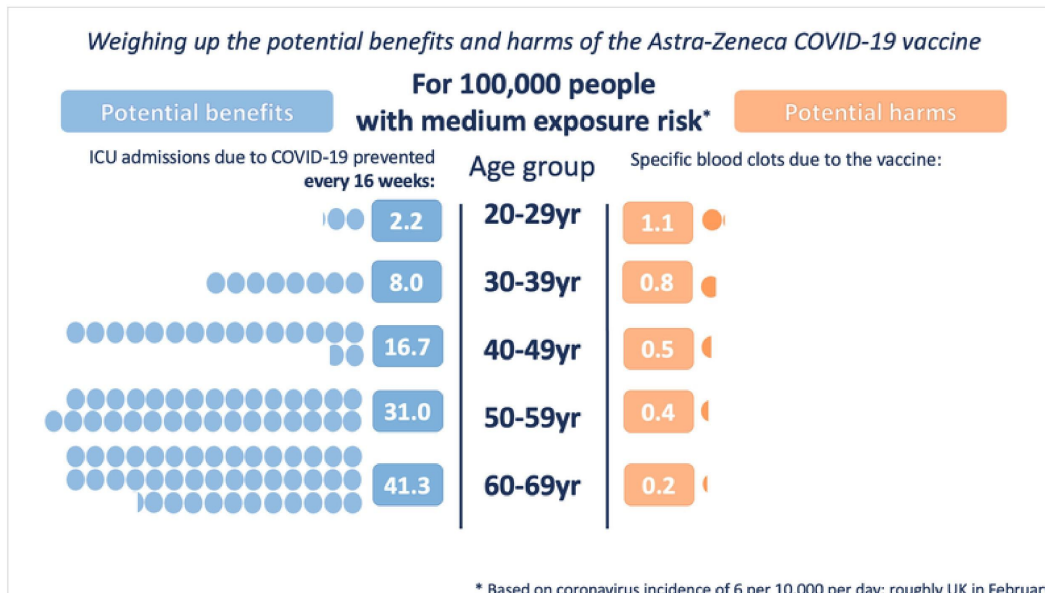
*Weighing up the potential benefits and harms of the Astra-Zeneca COVID-19 vaccine*



\* Based on coronavirus incidence of 2 per 10,000 per day: roughly UK in March

Illustration of the potential harms and benefits at a low exposure (incidence of 2 in 10,000 per day - roughly the UK in March 2021)

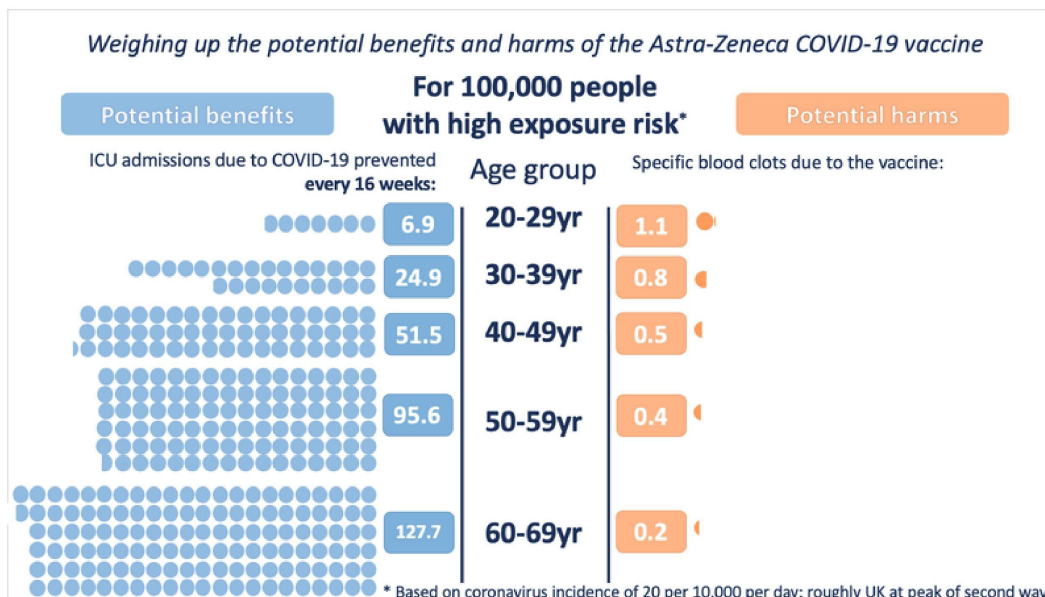
*Weighing up the potential benefits and harms of the Astra-Zeneca COVID-19 vaccine*



\* Based on coronavirus incidence of 6 per 10,000 per day: roughly UK in February

At medium exposure (incidence of 6 in 10,000 per day - roughly the UK in February 2021)

*Weighing up the potential benefits and harms of the Astra-Zeneca COVID-19 vaccine*



\* Based on coronavirus incidence of 20 per 10,000 per day: roughly UK at peak of second wave

And at high exposure (incidence of 20 in 10,000 per day - roughly the UK at the height of the second wave)