

A. FOR REFERENCE: ONSET CATEGORISATION (Acute trusts)

Fig 1a: Count by association and week of specimen

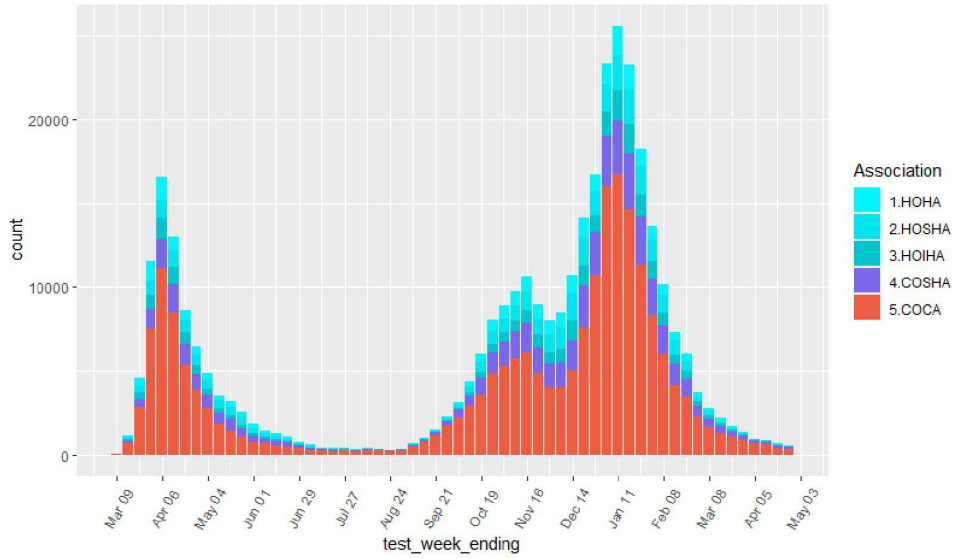
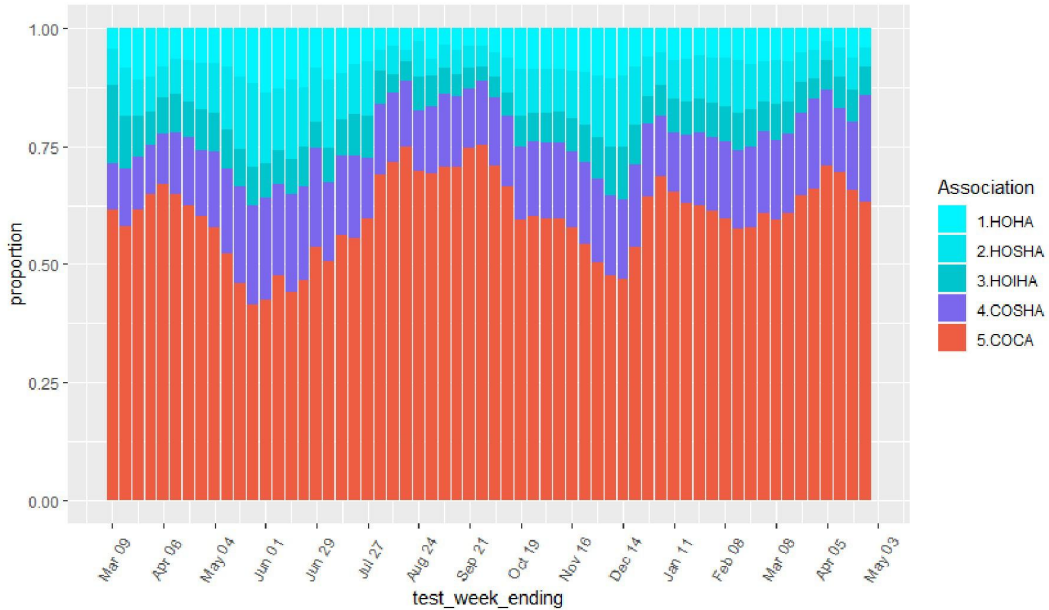


Fig 1b: Count by association and week, proportional

- Nosocomial proportion lower in Wave 2b vs Wave 2a
- Nosocomial proportion generally lower when cases lower



APPENDIX: Deaths by onset category

Whole time period, all trusts

<i>category</i>	<i>deaths/total</i>	<i>proportion</i>	<i>mean age</i>
HOHA	9854/29950	33%	75
HOSHA	12843/35549	36%	76
HOIHA	8454/26367	32%	73
COSHA	11877/54775	22%	63
COCA	42259/217088	19%	62
HO	31151/91866	34%	
CO	54136/271863	20%	
ALL		23%	

First wave (up to end Aug 2020)

<i>category</i>	<i>deaths/total</i>	<i>proportion</i>	<i>mean age</i>
HOHA	3048/8685	35%	75
HOSHA	3604/8843	41%	76
HOIHA	2362/6944	34%	72
COSHA	4360/12449	35%	71
COCA	15474/53198	29%	66
HO	9014/24472	37%	
CO	19834/65647	30%	
ALL		32%	

Second wave (from Sep 1st 2020 to end Dec 2020 to Apr 30th 2021)

<i>category</i>	<i>deaths/total</i>	<i>proportion</i>	<i>mean age</i>
HOHA	6806/21265	32%	75
HOSHA	9239/26706	35%	76
HOIHA	6092/19423	31%	74
COSHA	7517/42326	18%	61
COCA	26785/163890	16%	61
HO	22137/67394	33%	
CO	34302/206216	17%	
ALL		21%	

Also note:

- Wave 2a and 2b very similar mortality proportions (not detailed here)