

# NI HUB NORTHERN IRELAND SITUATION REPORT

SitRep **018**

Date **Tuesday 02 March 2021, Information Correct as of 1800hrs**

## Weekly Rhythm

CCG (O) Not Meeting - Stand-By Footing

NI EPG Down-Rep Friday

SCG N/A

## Civil Contingencies

● NI Hub Status Hub Alert

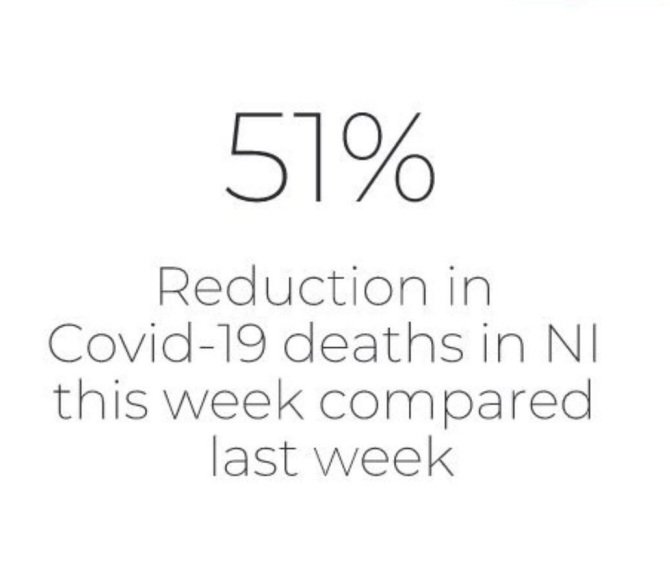
● DOC Status Not Activated - C3 Reach Back



# Covid19 Overview

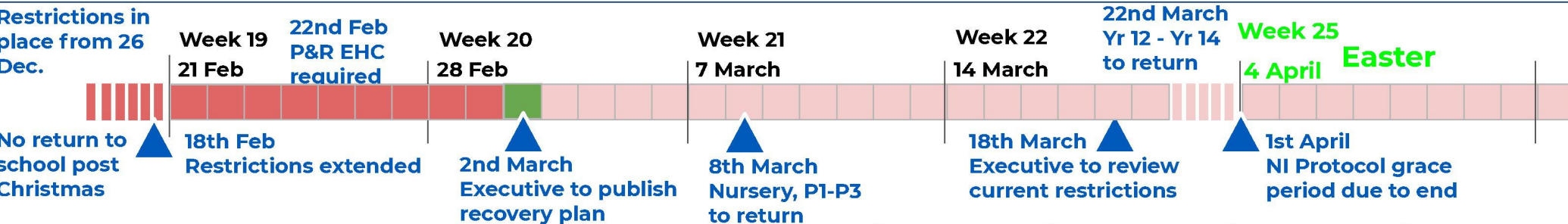
Sources: (1) DoH Daily Dashboard 2nd Mar '21      (2) DoH Health Gold Ops Cell, 2nd Mar '21

To be updated



# Impact of Restrictions on Key Metrics

Sources: (1) DoH Daily Dashboard 23rd Feb '21      (2) NI Regional Covid19 Modelling Group



\*Week 20 based on data from 27 Feb - 01 March (3-day average)



Rolling Daily Average	Week 14 (16-22 Jan)	Week 15 (23-29 Jan)	Week 16 (30-05 Feb)	Week 17 (06-12 Feb)	Week 18 (13-19 Feb)	Week 19 (20-26 Feb)	Week 20* (27-01 March)
R (Cases) R (Admissions)	0.65 - 0.85 1.0 - 1.2	0.65 - 0.80 0.80 - 0.90	0.75 - 0.85 0.75 - 0.85	0.75 - 0.85 0.70 - 0.90	0.70 - 0.80 0.45 - 0.65	0.80 - 1.05 0.50 - 0.80	0.65 - 0.75 0.90 - 1.05
Deaths (all settings)	18.9	17.0	11.7	8.7	6.0	3.9	1.7
Number of Test Positive Individuals (as % of overall tested)	746 (18.2%)	548 (14.9%)	438 (11.8%)	318 (10.3%)	295 (9.0%)	242 (5.0%)	[159 5.8%]
Covid-19 Inpatients	1,001	925	784	607	491	392	308
COVID-19 ICU Inpatients	67.6	69.1	66.9	61.4	54.9	45.6	35

# Covid-19 Transmission: Local Government District

Sources: DoH Dashboard, published 02nd Mar '21

NISRA Mid-Year population estimates

To be updated

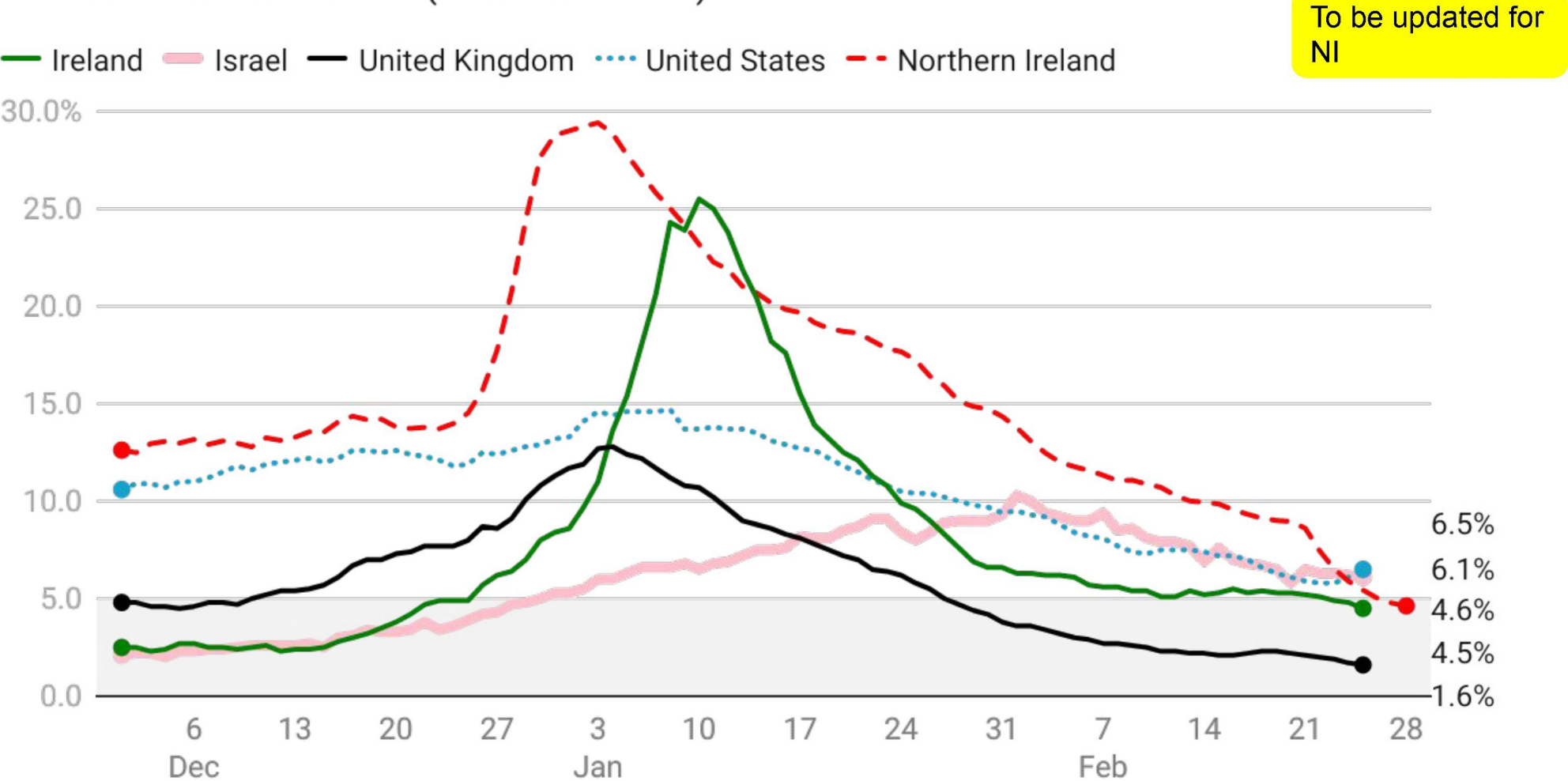
LGD	Covid-19 Cases from 26/12/21 to 01/03/21	Cases last 7 Days	Cases per 100k pop. last 7 days
Antrim and Newtownabbey	 59 to 12	112	<div><div>78</div></div>
Ards and North Down	 37 to 6	86	<div><div>53</div></div>
Armagh City, Banbridge and Craigavon	 82 to 10	215	<div><div>99</div></div>
Belfast	 116 to 32	338	<div><div>98</div></div>
Causeway Coast and Glens	 41 to 7	73	<div><div>50</div></div>
Derry City and Strabane	 80 to 6	118	<div><div>78</div></div>
Fermanagh and Omagh	 70 to 8	48	<div><div>41</div></div>
Lisburn and Castlereagh	 54 to 11	121	<div><div>83</div></div>
Mid and East Antrim	 48 to 11	137	<div><div>98</div></div>
Mid Ulster	 56 to 10	158	<div><div>106</div></div>
Newry, Mourne and Down	 60 to 8	85	<div><div>47</div></div>

# Covid-19 Country Comparison: Percentage of Tests, testing positive

Source: Our World in Data 2nd Mar '21 (data to 1st Mar '21)

Data provided by DoH, 2nd Mar '21

1st Dec '20 to 25th Feb '21 (NI to 1st Mar '21)



NB: According to criteria published by WHO in May '20 a positive rate of less than 5% is one indicator that the epidemic is under control in a country.



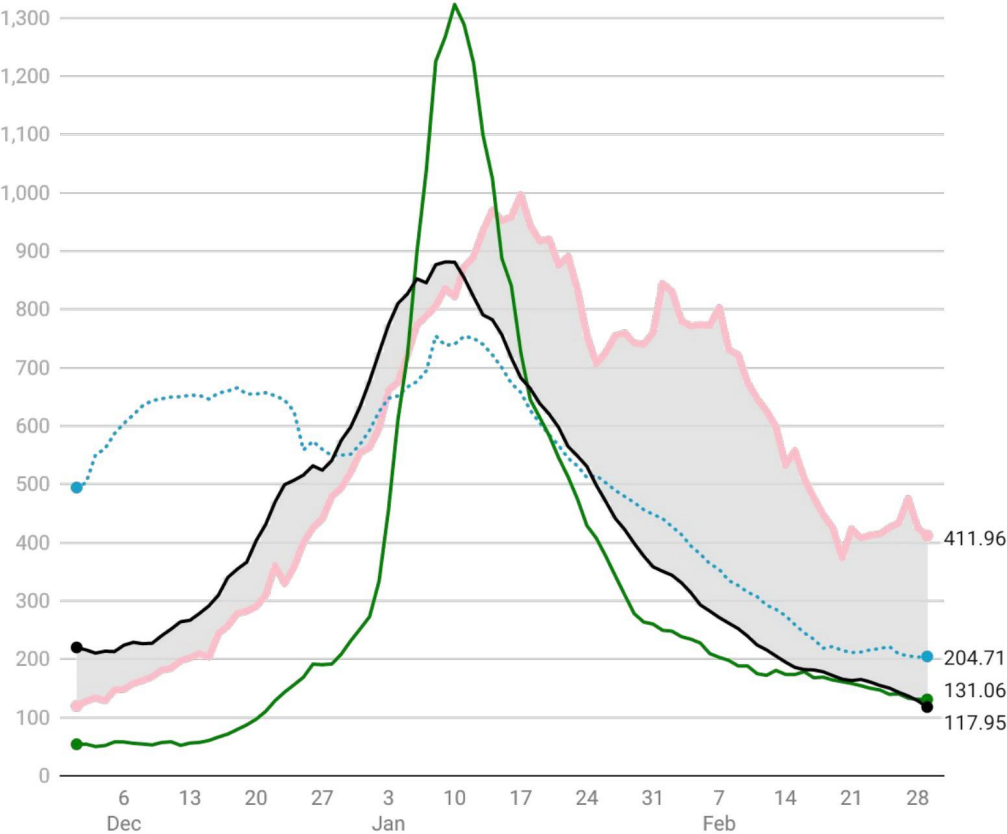
# Covid-19 Country Comparison: Transmission and Hospitalisation (7 day rolling ave.)

Source: Our World in Data 2nd Mar '21 (data to 1st Mar '21)

Ireland Israel United Kingdom United States

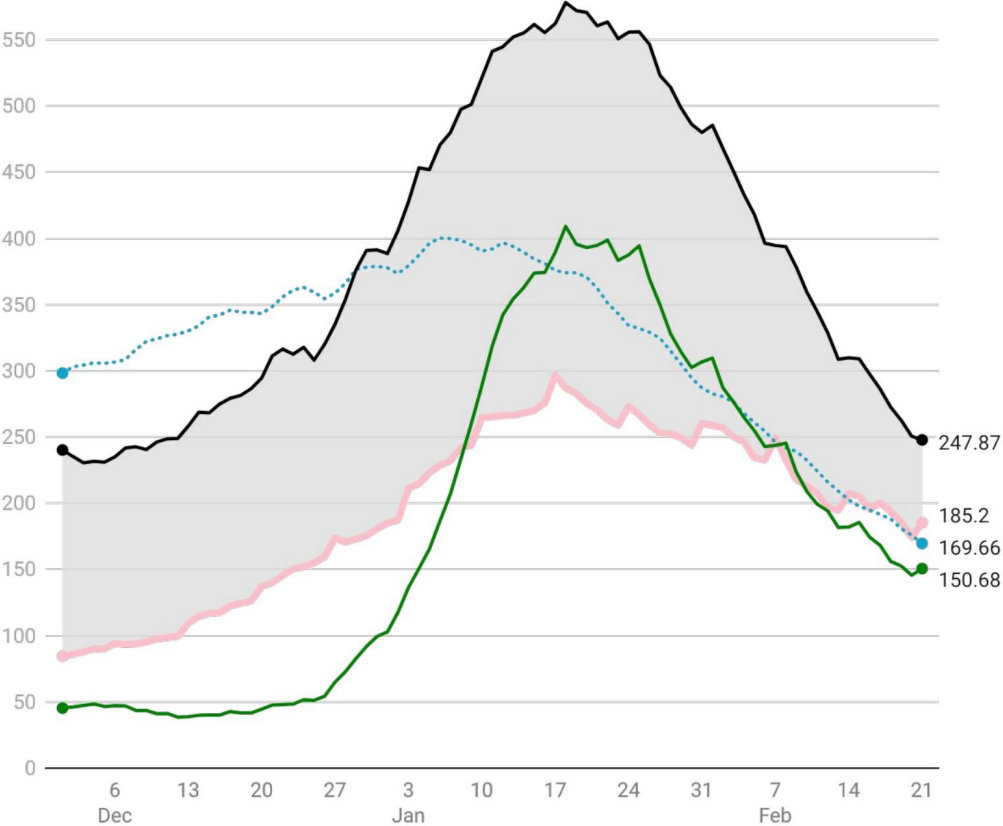
## New Covid-19 Cases per million

1st Dec '20 to 1st Mar '21



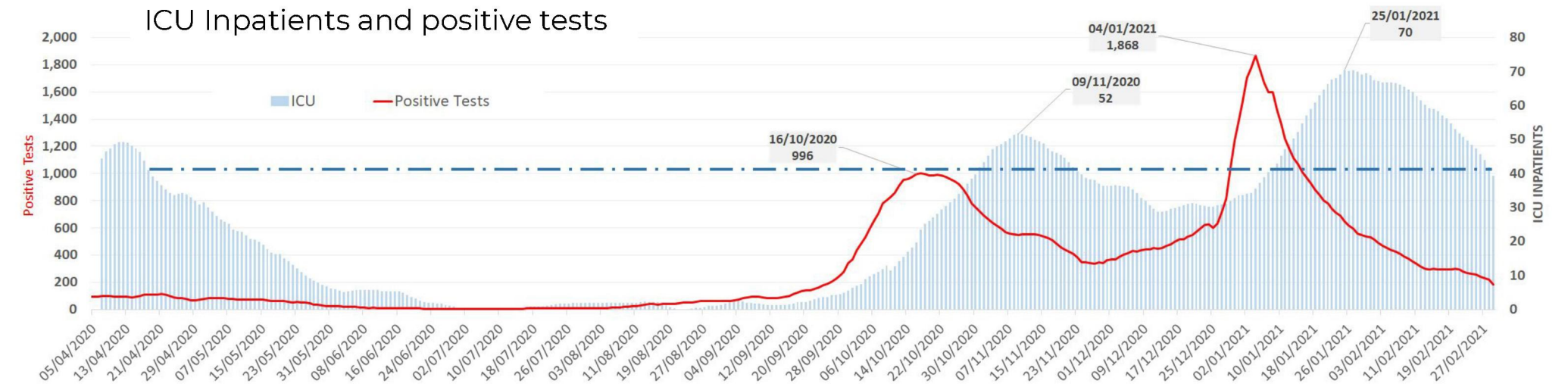
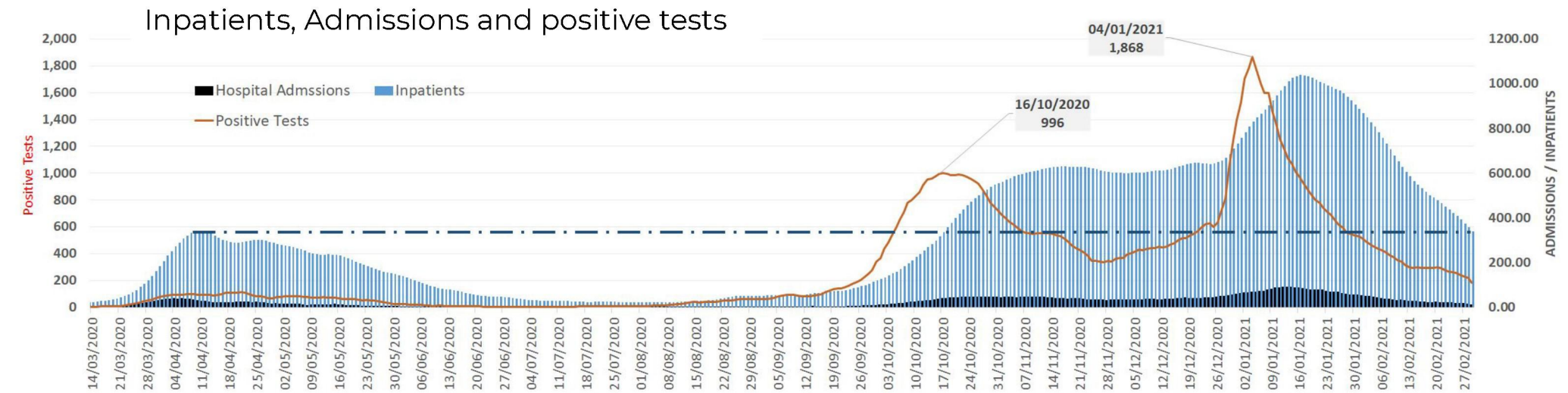
## Covid-19 Inpatients per million pop.

1st Dec '20 to 21st Feb '21



# Covid19- Testing, Admissions and Inpatients

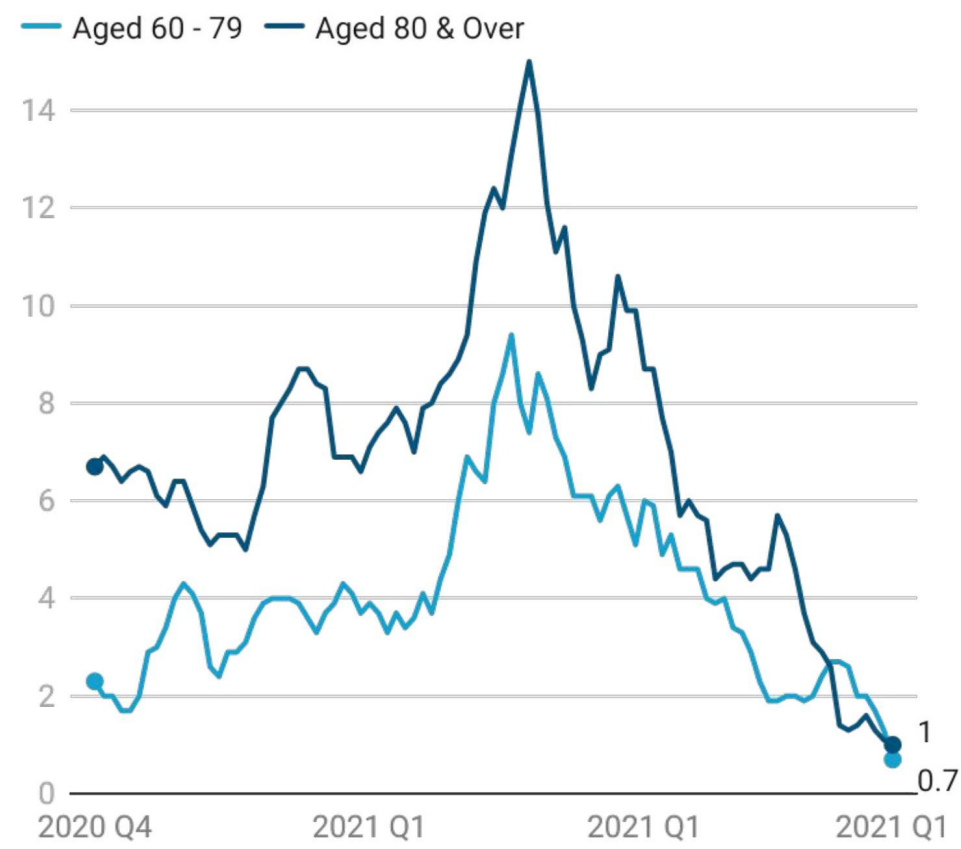
Source: DoH Dashboard, 02 Mar '21 (Data to 1st Mar '21)



# Covid19 Deaths - Excess mortality during Covid-19: Deaths from all causes compared to previous years, all ages. Source: Our World in Data, 01 March '21

## Covid-19 Deaths

7-Day Rolling Average



NB: Data only available for all countries up to 6th Dec '20. NI data is to 21st Feb '21

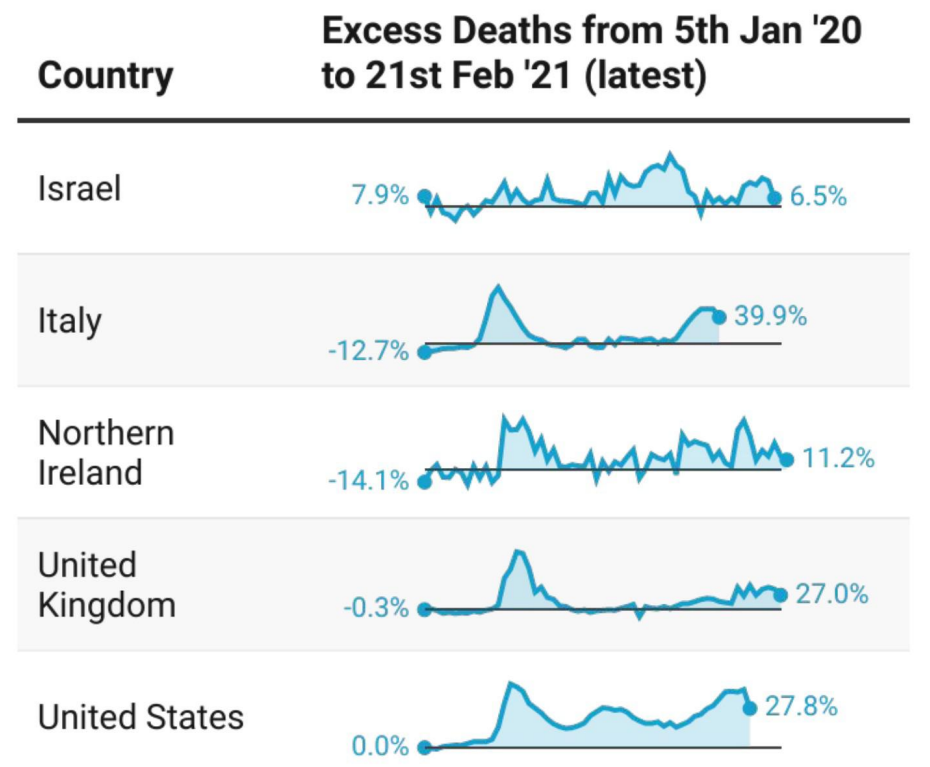


Chart shows the percentage difference in the number of weekly or monthly deaths in 2020-21, compared to the same period over the years 2015-19.

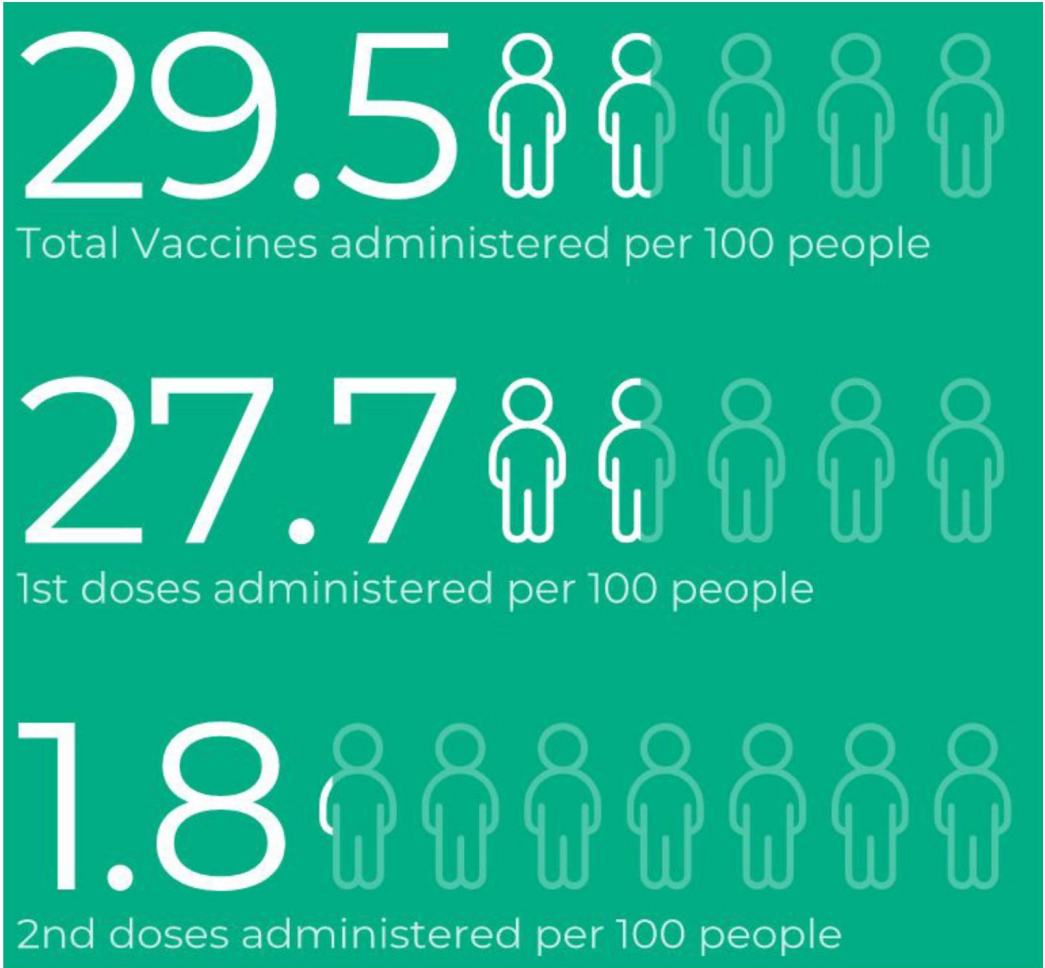


# Vaccination - Regional/ International Comparison

## Covid-19 vaccination cumulative per 100 people

Sources: (1) Our World in Data, 2nd Mar '21

(2) <https://coronavirus.data.gov.uk/details/vaccinations> (data to 28th Feb)

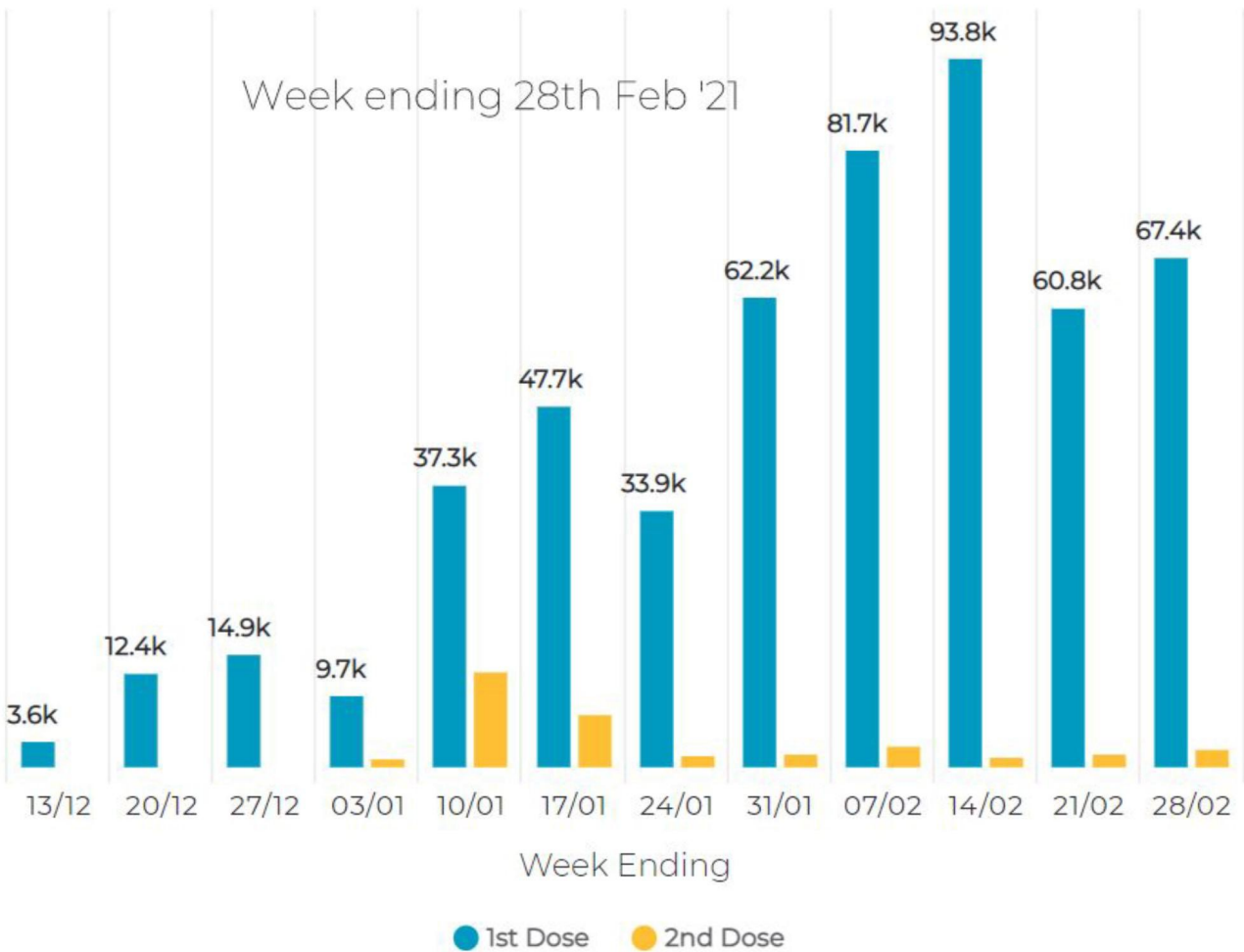


# Vaccination - NI Weekly Covid19 Vaccination progress

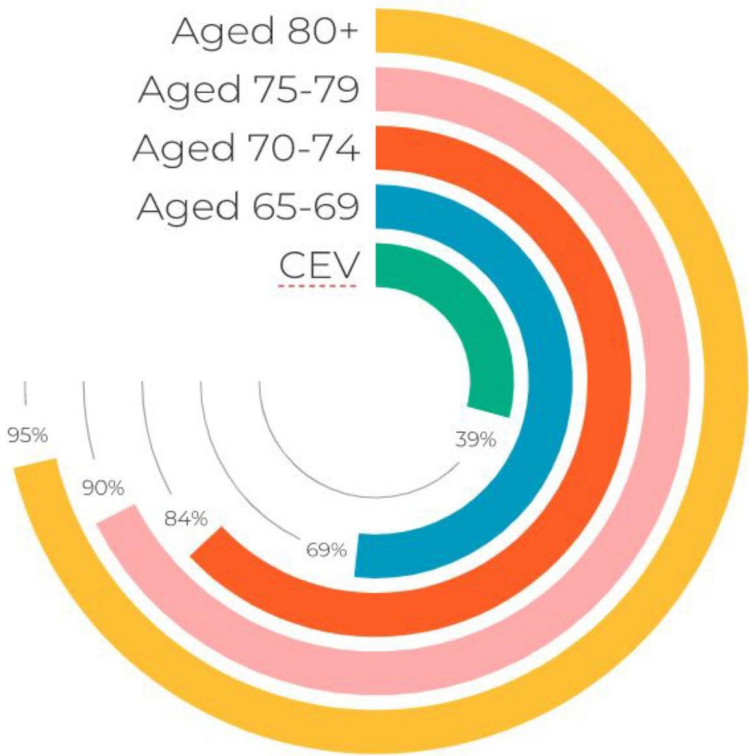
Sources: (1) [www.health-ni.gov.uk/news/breakdown-vaccination-figures-issued](http://www.health-ni.gov.uk/news/breakdown-vaccination-figures-issued) (2) <https://coronavirus.data.gov.uk/details/vaccinations>

Note: Doses Administered at 28th Feb = 541k

Progress over time



Progress by target group

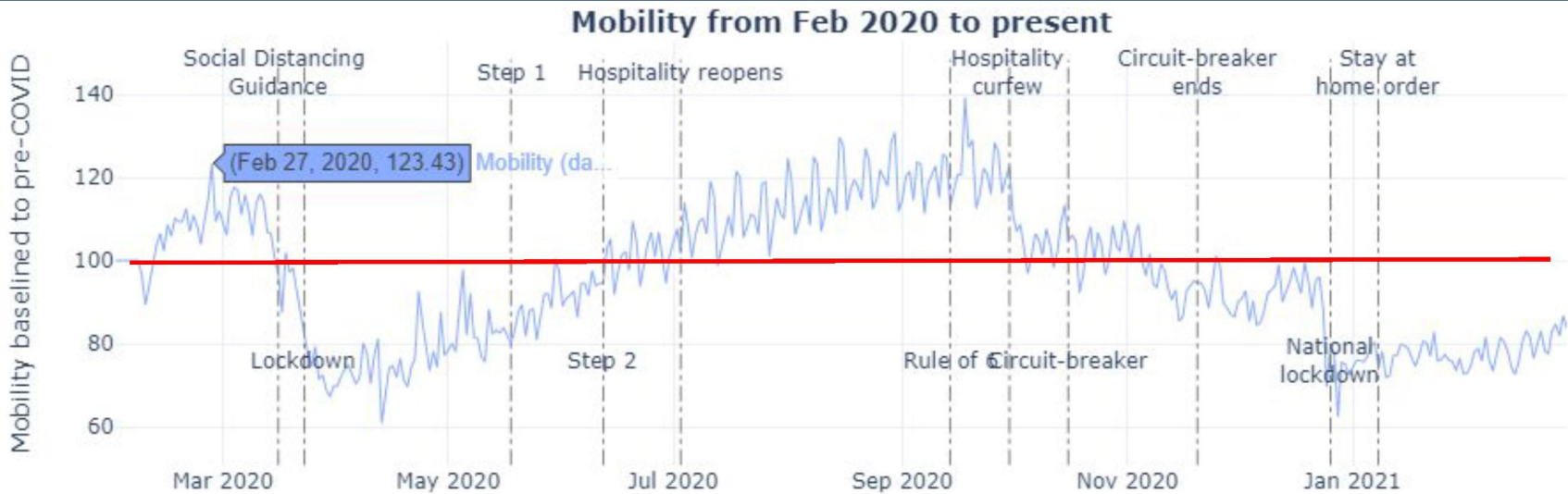


CEV = Clinically Extremely Vulnerable

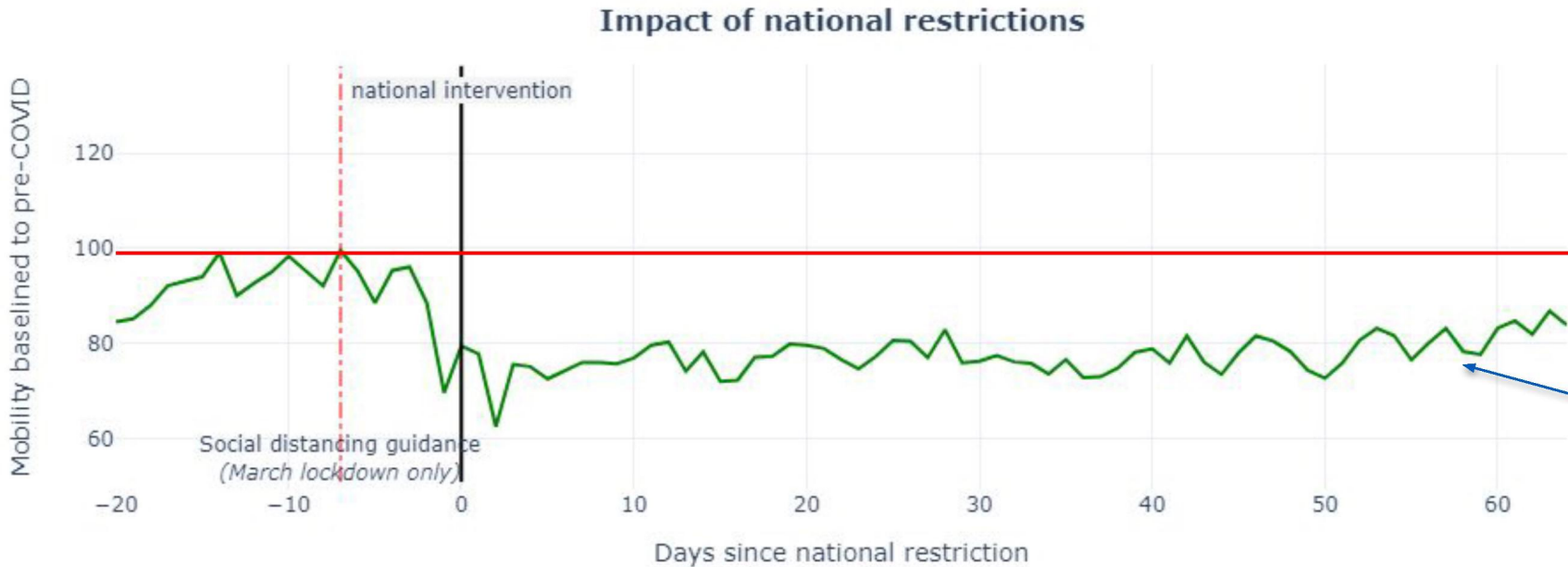
# Covid-19 Restrictions - Adherence

Source: Cabinet Office Dashboard, 2nd Mar '21

OFFICIAL-SENSITIVE DO NOT SHARE WITHOUT PERMISSION



The two charts use mobile phone data to show the amount of time spent at usual place of residence.



100 = pre-Covid19 baseline

Lockdown (Dec '20)

# Covid-19 Restrictions - Asymptomatic Testing

Source: DoH Health Gold Ops Cell 2 March 2021

## Asymptomatic Testing

Expansion of our asymptomatic testing programme will enable targeted testing for communities, businesses and emergency services across Northern Ireland

The programme will use new tests currently available, for example Lateral Flow Devices (LFDs), and it will expand as appropriate to use additional new testing technologies as they become available.

Regular testing of those who do not have symptoms will help us find hidden positive cases in an early and timely way, and thus will assist in breaking chains of transmission.

This is intended only for the workforce that **cannot** work from home. It does not replace the current requirement for working from home;

SMART (Systematic, Meaningful, Asymptomatic, Repeated Testing) tests must be carried out alongside other measures such as social distancing, hand hygiene and face coverings.

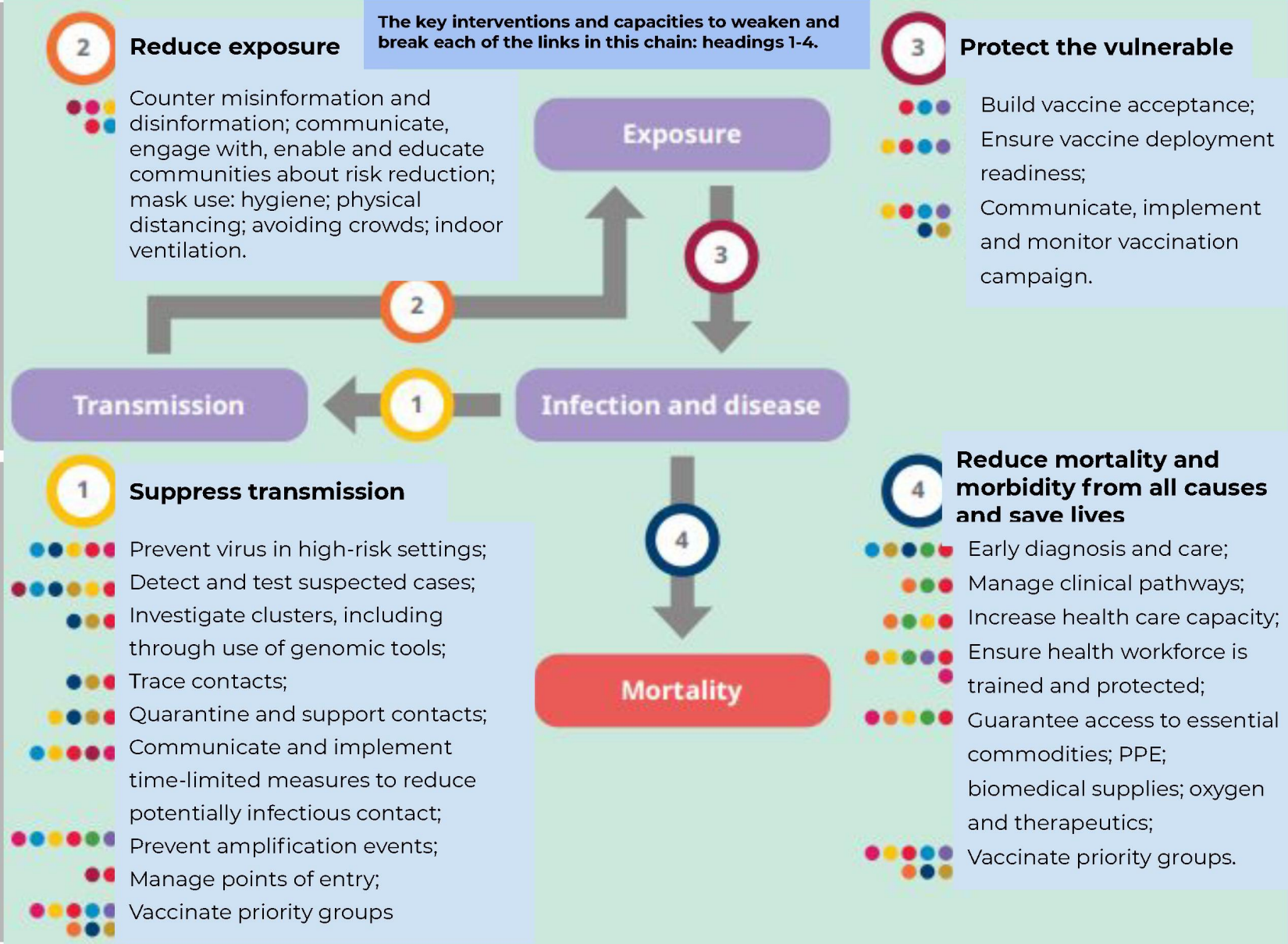


# WHO COVID-19 Strategic Preparedness and Response Plan: 1 February 2021 to 31 January 2022 - Public health and social measures are supported by multiple response pillars

Source: [https://cdn.who.int/media/docs/default-source/3rd-edl-submissions/who\\_sprp-2021final18022021.pdf?sfvrsn=ce5092f9\\_1&download=true](https://cdn.who.int/media/docs/default-source/3rd-edl-submissions/who_sprp-2021final18022021.pdf?sfvrsn=ce5092f9_1&download=true)

For the purposes of the national level planning and coordination, the high-level COVID-19 SPRP 2021 retains the same core structure and rationale as the SPRP for 2020, with a number of key additions and adaptations in response to lessons learned over the past 12 months, and to address new challenges in the year ahead.

The inevitable evolution and emergence of new COVID-19 variants poses a significant risk of undermining the effectiveness of new vaccines even before they become widely available. The key to ending the pandemic lies in achieving the strategic public health objectives in the WHO updated COVID-19 SPRP 2021.

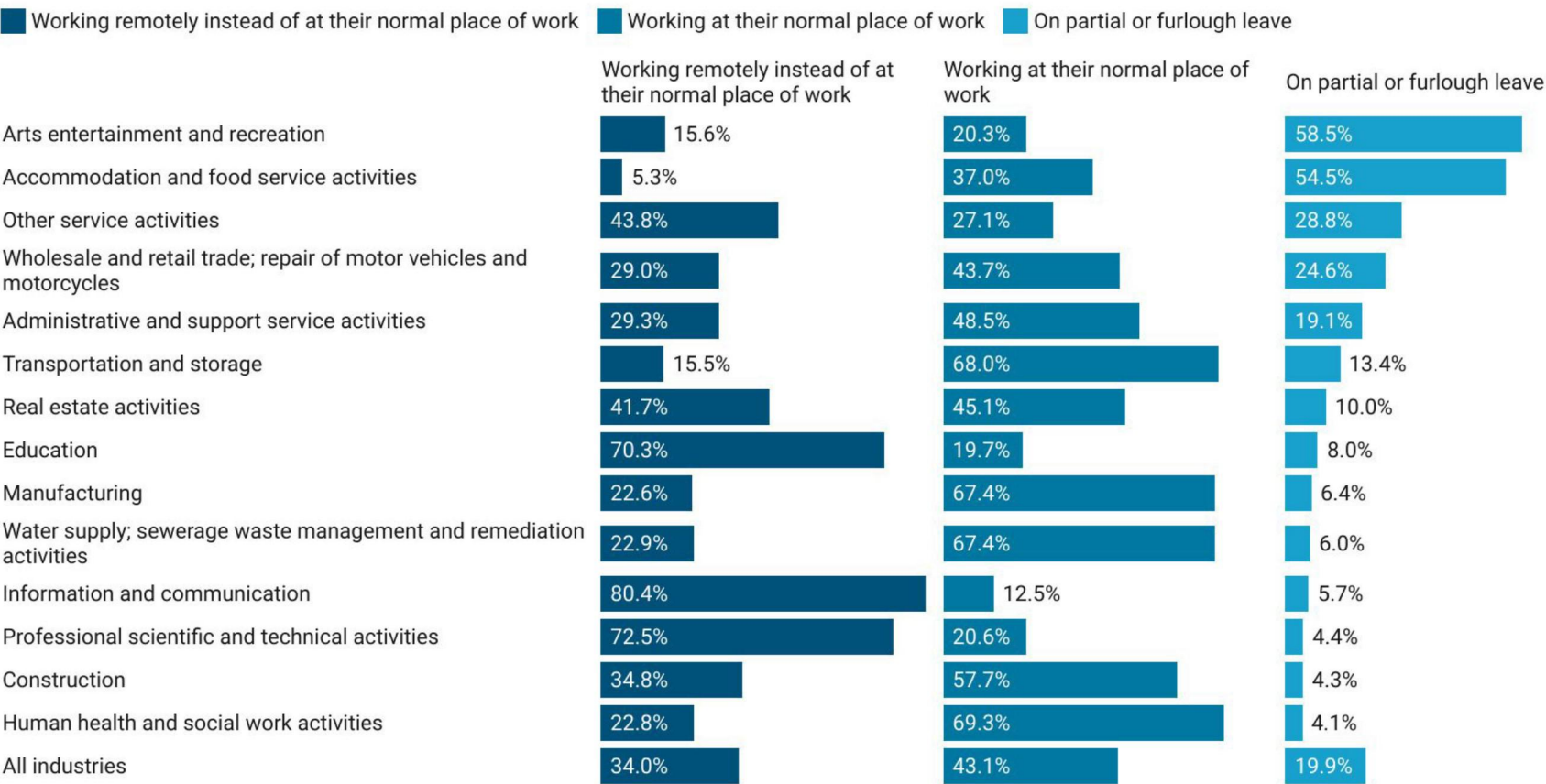


# Economy Overview - Business Insights

Source: Office for National Statistics - Business Insights and Conditions Survey

Both the arts, entertainment and recreation industry and the accommodation and food services industry had more than half of its workforce on furlough leave

Working arrangements, businesses not permanently stopped trading, broken down by industry, weighted by employment, UK, 25 January to 7 February 2021



# Economy Overview - Business Impact

Source: Office for National Statistics – Business Impact of Coronavirus (COVID-19) Survey



Northern Ireland have a lower net percentage of businesses experiencing a decrease in turnover since early November 2020. These net percentages were lower across all sectors and most significantly in production.

Wales had the highest net percentage of businesses experiencing a decrease in turnover over the course of December 2020.



# Access List

**OFFICIAL SENSITIVE – DO NOT SHARE WITHOUT PERMISSION**

The NI SitRep and its content is **not** public facing and should not therefore be shared. Those in receipt of the document should ensure it is appropriately handled in line with Government Security Classification Guidance.

- NI Executive Ministers
- HOCS
- CCG O
- NICS Permanent Secretaries
- NI EPG
- PSNI
- SOLACE
- NIHUB / Civil Contingencies
- TEO COVID Recovery
- NICS DOCs / Emergency Planning Teams
- DSO

SitRep@NIHUB.gov.uk

**Permission should be sought for any circulation beyond the agreed Access List, from [sitrep@nihub.gov.uk](mailto:sitrep@nihub.gov.uk)**

