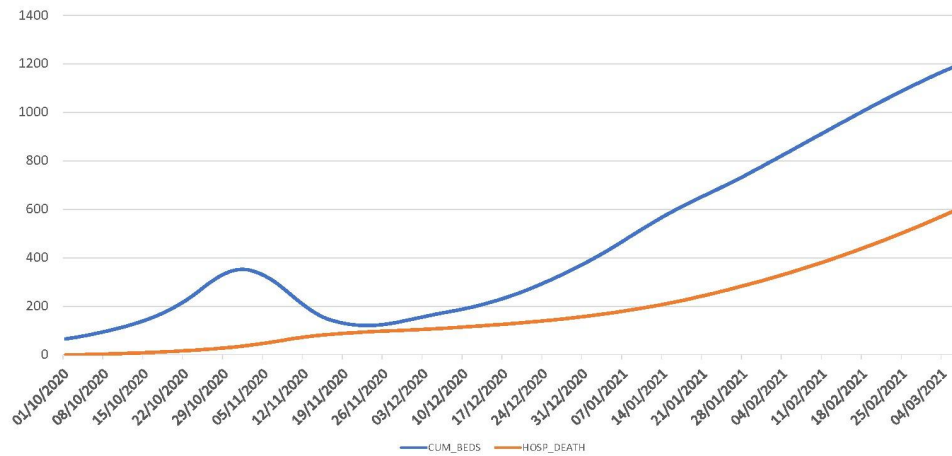
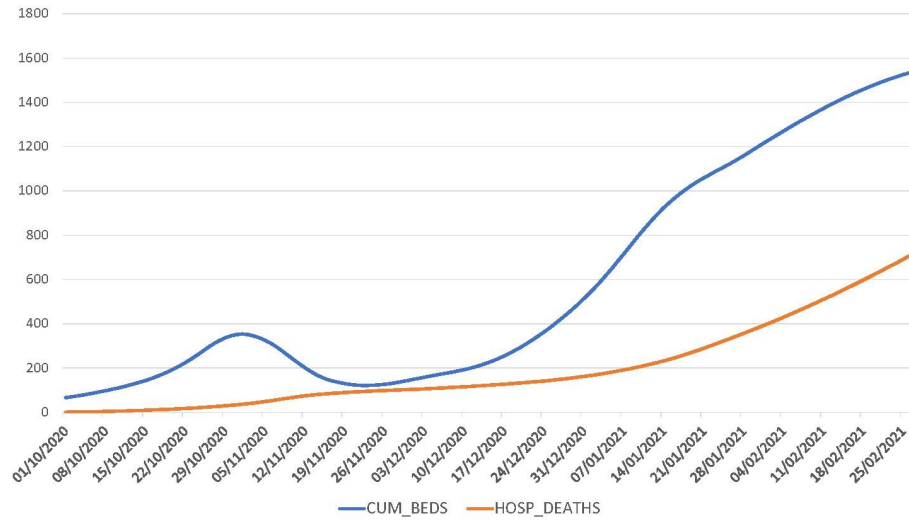
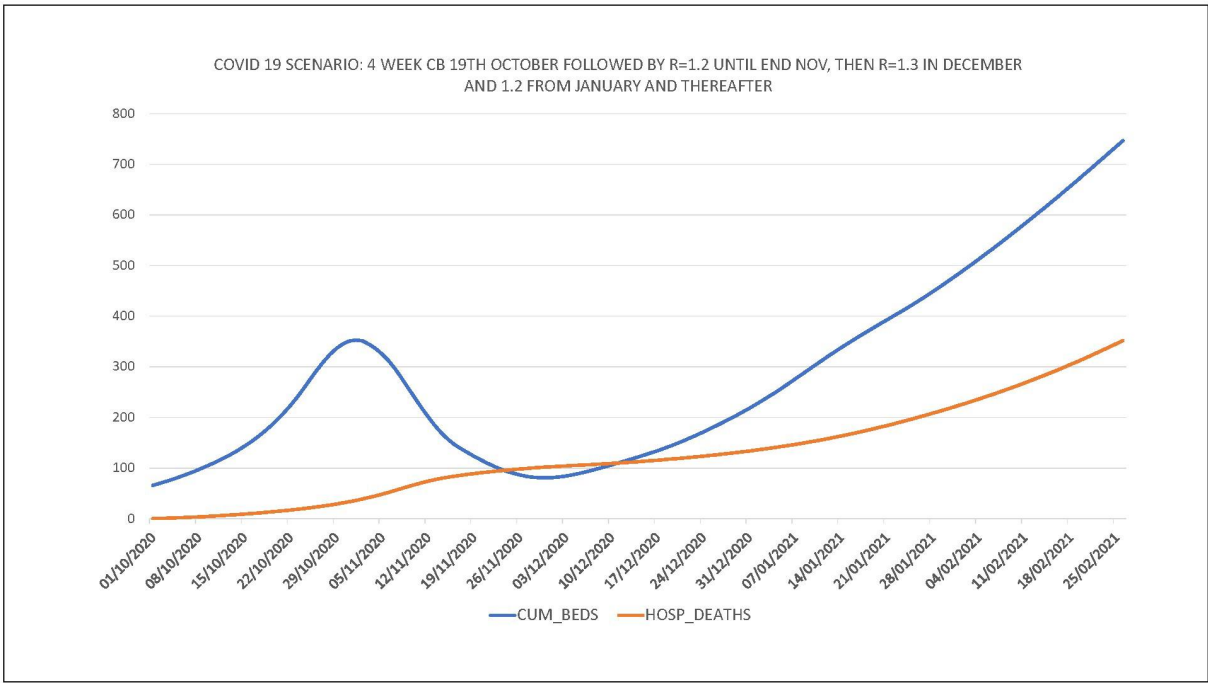


COVID 19 SCENARIO: 3 WEEK circuit break $R_t=0.7$ 19TH OCTOBER FOLLOWED BY
 $R_t=1.2$ UNTIL END NOV, THEN $R_t=1.3$ IN DECEMBER AND 1.2 FROM JANUARY AND
THEREAFTER

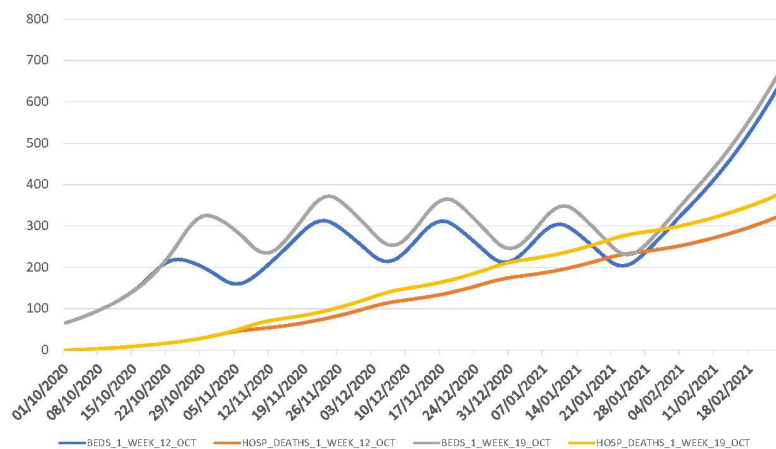


COVID 19 SCENARIO: 3 WEEK circuit break $R_t=0.7$ 19TH OCTOBER FOLLOWED BY $R_t=1.2$ UNTIL END NOV, THEN $R_t=1.4$ IN DECEMBER AND 1.2 FROM JANUARY AND THEREAFTER





COVID 19: Rt drops to 0.7 at 1 week breakpoints with multiple one
week circuit breaks
Cumulative admissions & Deaths (c350 cap)



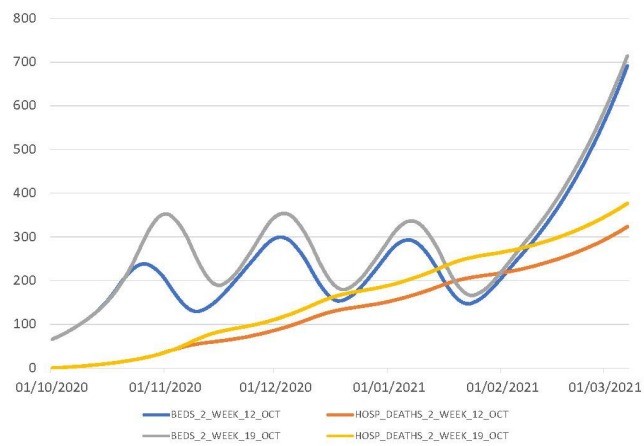
12th October start breaks

- 12th October
- 13th November
- 10th December
- 5th January

19th October start breaks

- 19th October
- 18th November
- 13th December
- 6th January

COVID 19: Rt drops to 0.7 at 2 week breakpoints
Cumulative admissions & Deaths (c350 cap)



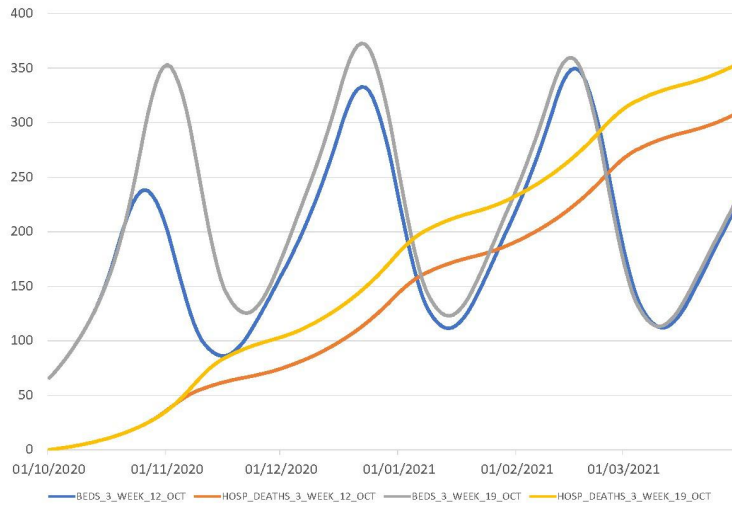
12th October start breaks

- 12th October
- 24th November
- 29th December

19th October start breaks

- 19th October
- 20th November
- 27th December

COVID 19: Rt drops to 0.7 at 3 week breakpoints
Cumulative admissions & Deaths (c350 cap)



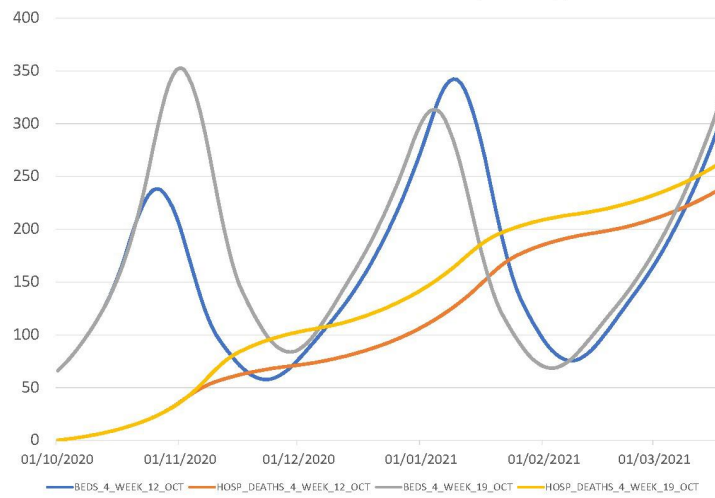
12th October start breaks

- 12th October
- 8th December
- 2nd February

19th October start breaks

- 19th October
- 9th December
- 1st February

COVID 19: Rt drops to 0.7 at 4 week breakpoints
Cumulative admissions & Deaths (c350 cap)



12th October start breaks

- 12th October
- 20th December

19th October start breaks

- 19th October
- 19th December

COVID 19: 3 WEEK CB 19TH OCTOBER & 2 WEEK CB 4TH JANUARY
 $R_t = 0.7$ DURING CIRCUIT BREAKERS

