

NI HUB

NORTHERN IRELAND SITUATION REPORT

SitRep **007**

Date **Tuesday 8 December 2020, Information Correct as of 18:00**

Weekly Rhythm

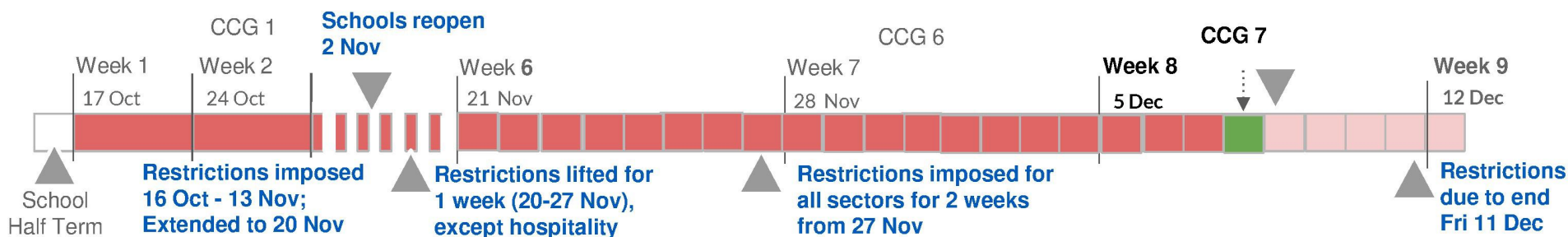
CCG (O)	Wednesday
NI EPG Down-Rep	Friday
SCG	N/A

Civil Contingencies

- NI Hub Status Alert Phase - Partial Stand-Up
- DOC Status Not Activated - C3 Reach Back



Restriction Period: Status (Source: DoH Dashboard, Daily data Excel spreadsheet, 8th December 20)



Impact of current restrictions on key COVID-19 metrics (Source: DoH Dashboard excel spreadsheet and **Source: DOH Regional Covid 19 Modelling Group 1st Dec 20)

*Week 8 average based on data from 5 Dec to 7 Dec

7 Day Rolling Values	Week 2 (24-30 Oct)	Week 3 (31- 6 Nov)	Week 4 (07-13 Nov)	Week 5 (14-20 Nov)	Week 6 (21-27 Nov)	Week 7 (28-4 Dec)	Week 8* (5-7 Dec)	Trend
R (Cases)	0.8 - 1.1	0.6 - 0.9	0.7 - 0.95	0.9 - 1.1	0.7 - 0.9	0.9-1.1	0.9 - 1.1	
R (Inpatients)	1.1 - 1.3	0.9 - 1.1	0.8 - 1.0	0.9 - 1.1	0.85 - 1.0	0.7-0.9	1.0 - 1.2	
Deaths (all settings)	9.6	9.4	9.9	11.7	7.7	8.1	8.6	
Number of Test Positive Individuals (as % of overall tested)	757 (17.6%)	573 (15.1%)	556 (13.5%)	447 (10.6%)	346 (8.9%)	424 (7.7%)	434 (7.7%)	
Covid-19 Inpatients	533	576	594	585	543	482	437	
COVID-19 ICU Inpatients	39.9	49.6	50.0	44.6	38.1	36.1	30.7	

OFFICIAL – SENSITIVE

2 08/12/2020

Reproduction(R) number as calculated by the NI Regional Modelling Group

INQ000065891_0002

Headline Data (Source: DoH Dashboard 24th Nov 20)

Economic output lost in Q2 2020	Doubling rates and case numbers in last 7 days	Total nr of tests
-13.6% - The NICEI indicates that economic output decreased by 13.6% in real terms over the quarter to June 2020 - the largest quarter on quarter decrease over the series, (NICEI - NI Composite Economic Index)	89.1 days - number of confirmed cases doubling at a faster rate over past 7 days than previous 7 days (96.2). This is first time a faster doubling rate has been reported since 6 Oct 20. 2,958 cases over past 7 days compared to 2,599 in 7 days before - increase of 359. This is first time an increase in no. of cases has been reported since 12 Oct.	~ 1million 997,661 - total number of tests for COVID19 (8 Dec 20).

Items for Escalation to CCG

URN	Dept.	Decision Description	BRAG
AP001/20	DoJ	PSNI has advised that the absence of a SCG limits the ability to align and agree organisational priorities against the COVID-19 threat.	A
AP001/20	DoJ	An opportunity to provide operational input by the PSNI in advance of legislation being laid would be extremely beneficial to prevent potential issues from arising due to absence of shared situational awareness of the risks.	A

Key Issues

Dept.	Topic	Issue Description	BRAG
DfE	Covid	An initial DfE assessment of the potential economic impact of the current eight-week restrictions is estimated to lead to a possible loss in the range of 0.5% to 1.5% of Northern Ireland's annual GVA. The initial assessment considers there may be around 100,000 jobs in total 'locked out' by the Regulations, with potentially thousands, or tens of thousands of self-employed on top of this number.	R
DfE	Covid	The restriction period has exacerbated the challenge faced by tourism and hospitality businesses especially in the Christmas period. Those that have been required to close have missed an opportunity to generate much needed revenue (Government supports help offset this but only in part). Businesses are worried about the financial impact.	R
DAERA	Covid	A small number of cases of COVID 19 reported from Foyle Meats workforce (Campsie). There is engagement between the Company and PHA/HSENI. Following a meeting of Foyle Meat's Incident Management Team, there is to be a temporary and partial cessation of activities - to resume slaughter on Friday 11 December.	A

OFFICIAL – SENSITIVE

3 08/12/2020

INQ000065891_0003

Executive Summary con't

Key Progress

Dept.	Topic	Progress Description
DoH	Covid	The first batch (24,375 doses) of the Pfizer/BioNTech Covid-19 vaccine arrived into NI. The regional vaccination programme started today, 08/12/2020. Vaccination of HSCWs hope to begin on 14/12/20. Plans are being finalised which may allow the vaccine to be deployed in Care Homes via Trust mobile teams. The GP element is expected to begin early January.
DoF	Covid	On 23 November, the Finance Minister announced that manufacturing businesses would benefit from a 12 month rate relief for 2020/21. The value of this relief is £20m.
DoF	Covid	Local Restrictions Support Scheme - as of 4 th December 2020, 13,481 applications have been received and 6,482 payments including top ups due to the extension of the scheme, totalling £44.8m have been made to businesses across NI. 3,242 applications have been rejected.

Other Key Information

Dept.	Topic	Information Description
DfI	Covid	The most recent Executive restrictions implemented on 16 th Oct have, however, had a substantial negative impact on public transport passenger numbers with total passenger numbers on the week beginning 23 rd November at 38% of 2019 levels, which is down 2% from the previous week.
DoH	Covid	It is not expected that the vaccination programme will have a significant impact on infection rates for some months.
DoF	Covid	Tesco, Sainsbury's and Asda have announced their intention to repay rate reliefs awarded to them this year.
DoF	EU EX	DoF are co-ordinating planning for Data Adequacy and measuring data preparedness across the NICS. In the event of a 'no further negotiated' outcome, it is less likely that the UK Government will achieve adequacy decisions, meaning that until all organisations have implemented alternative mechanisms, a risk of disruption to personal data flows could persist after the immediate end of the transition period.

Strategy Workstream Status

Communication & Compliance



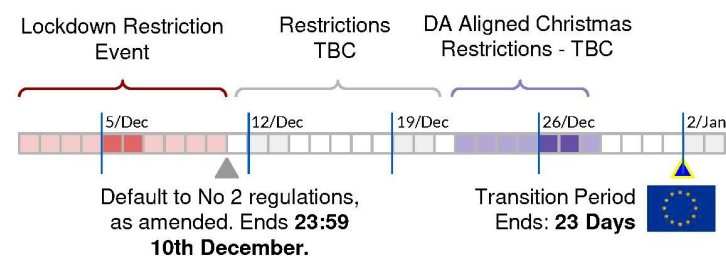
162,000

page views of *what the restrictions mean for you*. An increase from 89k last week

- 'Limit your contacts' campaign is continuing to run across all media channels. Guidance for the Christmas bubbling arrangements has been published and key messages will be published on social media channels over the coming weeks
- A 'Shop Safely' campaign will run across social media and radio from Friday 11th until 31st December

Legislation

Restrictions



New regulations in development to cover period from the 11th December onwards.

Weekly Focus: pre-Christmas Regulations

- New Regulations from 11th December
- Baseline position is to use the regulations that were in place on 15th October and amend only where necessary
- Sector specific meetings taking place with Hospitality, Retail and Sport & Leisure
- Ongoing meetings to define regulation wording around sporting events, main meals & kitchens and outdoor hospitality

Upcoming Activities to be Progressed

- [Regs]:** Strategy group to propose restrictions following Christmas period
- [TEO]:** Strategic Taskforce established
- [TEO]:** Student Lateral Flow testing underway and comms on NI Direct. Recommence support to the coordination of the QUB pilot and subsequent testing at HE institutions for the return home period
- [TEO]:** Continue cross RoI and UK discussions with regards to regulations over the Christmas period [Ongoing]
- [TEO]:** Continue the face coverings group to discuss any additional requirements and the development of standards.

Current Media and Communications

- A lot of media interest in the announcement that large supermarkets intend to repay their rate relief. Because the reliefs for supermarkets in NI were less generous than in other jurisdictions, it is likely that the amount returned will be less than the media or elected representatives expect (DoF).
- The Minister of Education launched the Childcare Sustainability Support Fund on 3 December, which opened to applications on Friday 4 December and will close for all applications on Friday 5 February 2021 at 5pm (DE).
- Five schools in Northern Ireland have said pupils will not be marked absent if they do schoolwork at home in the final week of term (BBC News).
- Stormont ministers were advised more Covid-19 restrictions will be needed "around Christmas" if the number of cases spikes due to a relaxation of some measures (BBC News NI).
- Two County Londonderry secondary schools are participating in a mass rapid Covid-19 testing scheme (BBC News).
- The UK and EU have reached agreement on how rules in the withdrawal agreement will be implemented, particularly in relation to Northern Ireland. The government says an agreement in principle has been found for issues including points of entry and the supply of medicines (BBC News)
- The Joint Committee on Vaccination and Immunisation (JCVI) has advised that pregnant women do not get the vaccine because there is no data as yet on the safety of Covid-19 vaccines in pregnancy (UTV News).
- DoH have confirmed that care home residents will be prioritised in the first phase of the Covid-19 vaccination programme (DoH Press Office).
- Communities Minister Caral Ní Chuilín and Rural Affairs Minister Edwin Poots have announced a further allocation of £1.7million to Councils as part of the Department for Communities' Covid-19 Recovery Revitalisation Programme (DfC Press Office).

Theme – Health

ISSUES			
	Description	Owner	BRAG
1	The provision of inpatient Haematology and Orthopaedic services continue to be significantly compromised as a result of the ongoing challenges in relation to side room provision.	DoH	A
2	There continues to be an unavoidable impact on capacity across the HSC Trusts mainly in relation to staff shortages in care homes.	DoH	A

RECENT ACTIONS	
	Decision
1	The regional vaccination programme started 08/12/2020 with the vaccinators at the Belfast Trust's vaccination site

Source:Vaccination Programme Overview for NIEPG 4 December 2020, Patricia Donnelly Head of NI COVID Vaccine Programme

Indicative timing of phases	VACCINATION PROGRAMME		Volume of population
December 2020	Phase 1	Priority Group 1 and 2: Care Homes residents (16k) and staff (32k) /Health and social care staff (71k+) & over 80 year olds (82k)	201k
Jan/Feb 2021	Phase 2	Priority Groups 3 to 7: Over 65 year olds (233K) / Vulnerable people under 65 years: Extremely vulnerable (95k) and moderate (130k)	458k
Spring 2021	Phase 3	Priority Groups 8 to 10: Over 50 year olds not already vaccinated Over 60 year olds (106k), over 55 year olds (125k) over 50 year olds (135k)	366k
Summer 2021	Phase 4	Mass vaccination programme. General population not already vaccinated	300k
2022 onwards	Phase 5	Routine vaccination programme Target population and vaccine to be advised	TBA

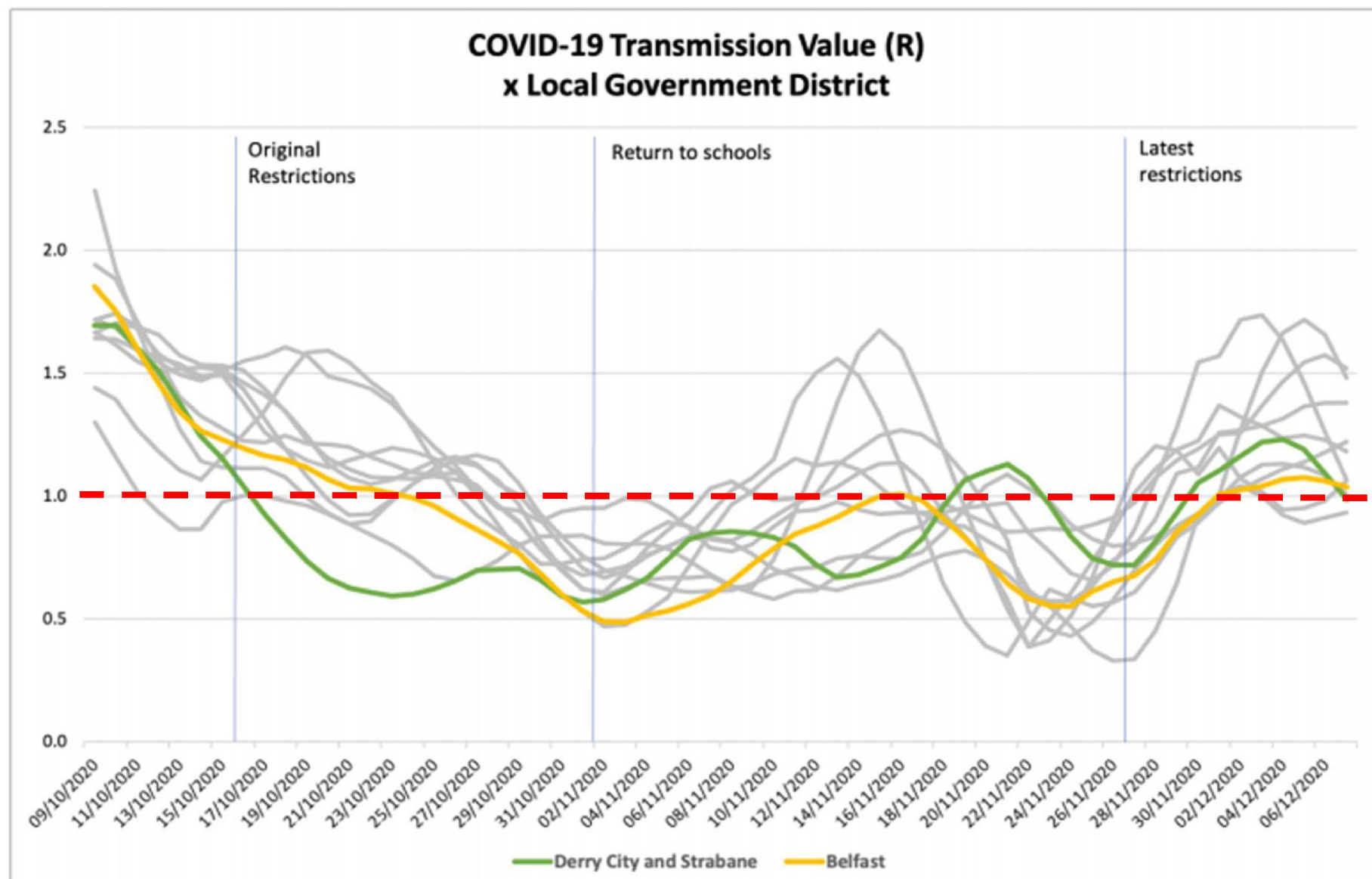
OFFICIAL – SENSITIVE

7 08/12/2020

INQ000065891_0007

Theme – Health: Transmission

COVID-19 TRANSMISSION VALUE Source: DoH Covid Modelling Group 8th Dec '20



OFFICIAL – SENSITIVE

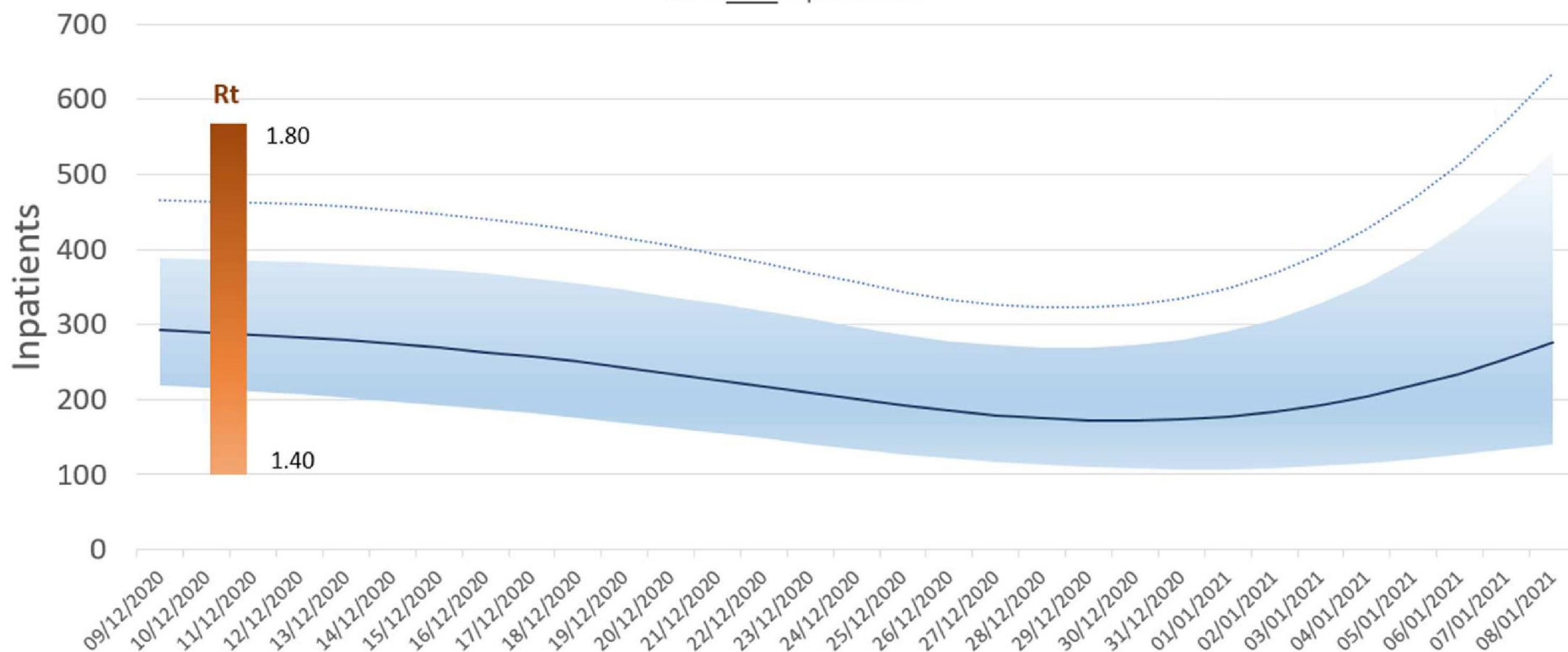
8 08/12/2020

INQ000065891_0008

Theme – Health: Transmission

COVID-19 INPATIENT PROJECTIONS Source: DoH Covid Modelling Group 8th Dec '20

NI COVID 19: **Occupancy** - Projection
Assuming no changes to current policy
This is **NOT** a prediction



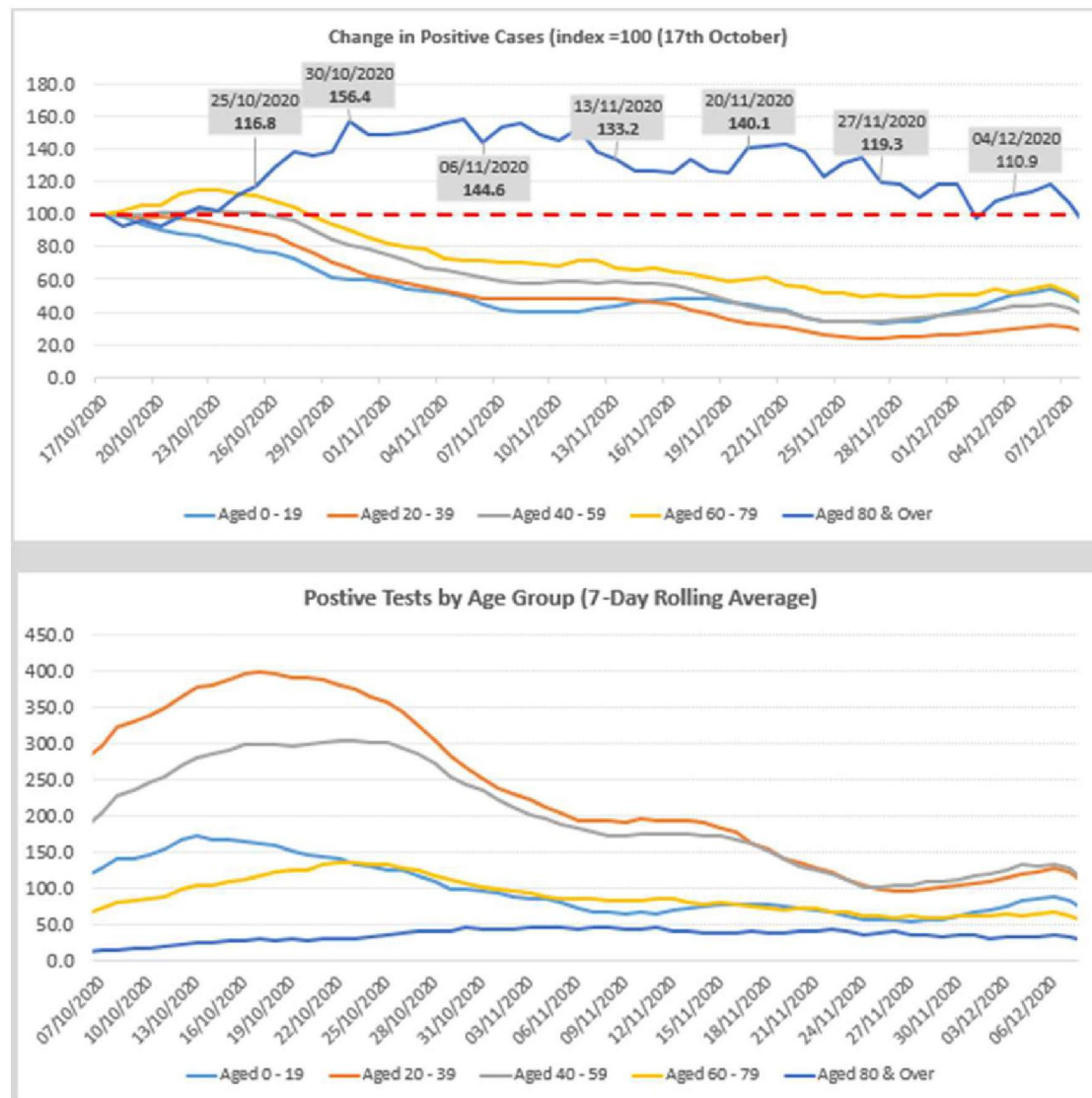
- Assumes R_t increases due to relaxation of restrictions on 11/12/2020 in range 1.4(below blue line), 1.6(blue line), 1.8(above blue line)
- Assumes no further restrictions
- Should R_t reach 1.8, inpatients could rise to over 500 from early January 2021**
- Notably R_t has already risen to these levels at the beginning of October this year

OFFICIAL – SENSITIVE

Theme – Health: Testing

TESTING AND RATE OF POSITIVE TESTS: ALL AGE GROUPS

Source: Daily Update, DOH Hospital Information Branch (received 8th Dec '20)



The daily number of positive cases at 7th December is 423 (7-day rolling average). By age-group this is made up as follows:

0-39 age group tests	204 cases	48% of positive tests
40-59	127 cases	30%
60-79	61 cases	15%
80+	31 cases	7%
All age groups	423	100%

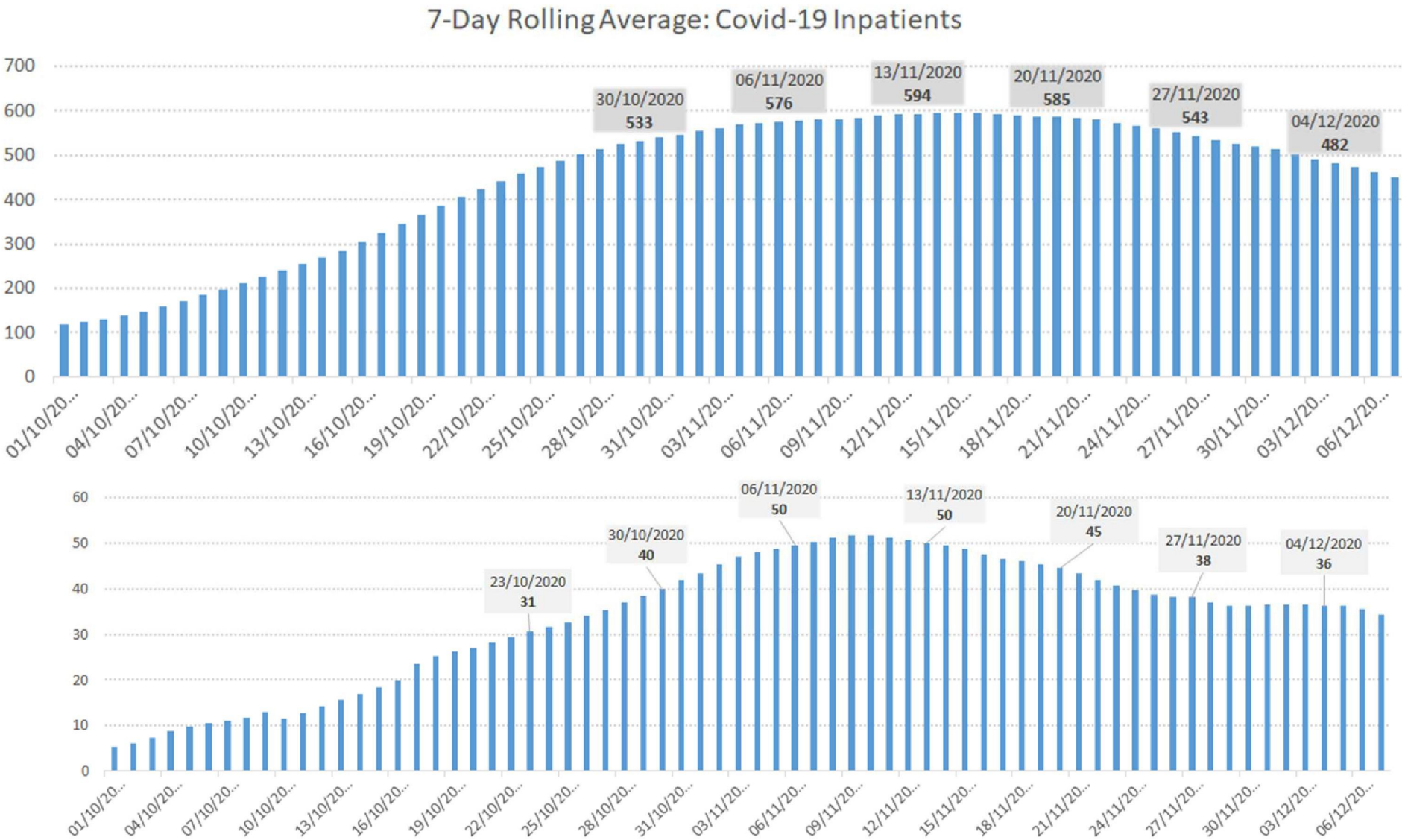
The first chart shows the relative impact on different age-groups of the restrictions introduced on the 17 October. There is a clear disparity in the impact of the restrictions between those aged 80 and above and all other age-groups.

For the **80+ age group** the number of daily cases is broadly similar to the 17th October. This is of concern (and particularly with families coming together over the Christmas period) as it is this age-group that is most likely to require hospital treatment.

The second chart shows the number of positive cases by age-group. The number of daily positive cases appears to have 'bottomed out' and it is reasonable to assume that case numbers will only rise with the easing of restrictions.

Theme – Health: Hospitalisation

Inpatient and ICU, 7-Day Rolling average (Source: DoH dashboard, Excel file published 8th Dec '20 (data to 7th Dec '20)



Theme – Health: Deaths

Excess Deaths and deaths from Covid-19

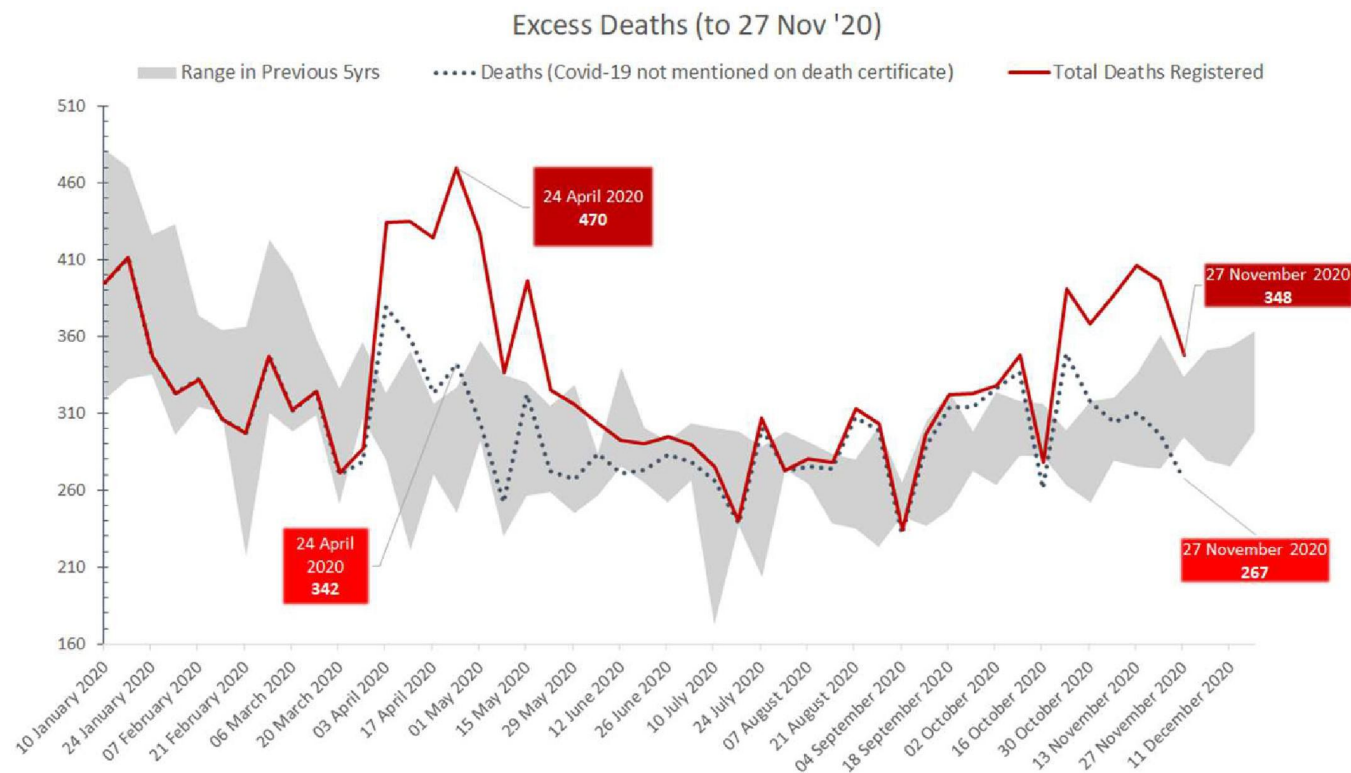
EXCESS DEATHS (see chart)

source: www.nisra.gov.uk/publications/weekly-deaths

For the w/e 27 Nov '20, including deaths where Covid-19 is mentioned on death certificate, the number of deaths is c.4% higher than the five year maximum. **81 Covid-19 deaths were registered in the week to 20th Nov.**

The age profile of Covid-19 deaths was as follows:

Age 85+	34
Age 75-84	26
Age 65-74	12
Age 45-64	8
Age 15-44	1



DEATHS FROM COVID-19 (1st Nov to 3rd Dec)

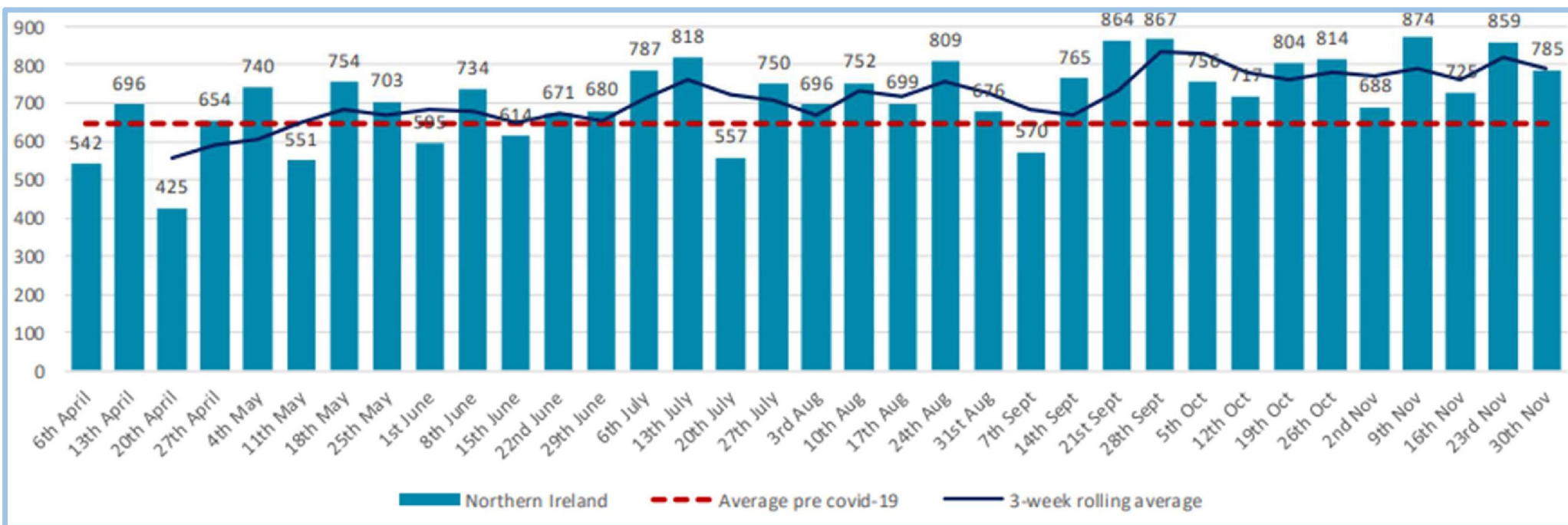
sources: <https://covid-19.geohive.ie/> <https://coronavirus.data.gov.uk/details/deaths>

- Daily deaths per million for NI (7-day rolling average = 4.5) is consistent with Scotland (4.1) and below England (5.7) and Wales (6.7)
- The death rate in NI remains above ROI death rate (1.4). Note ROI has increased markedly in the week to 3 December.

Theme – Health: Social Care

Number of Children referred to Social Services (provisional)

Source: DoH NI Children's Social Services Data during COVID-19, 3 Dec 20



Note: Referral figures can vary considerably week on week. A 3-week rolling average has therefore been added to better interpret any trend in the data.

Observation: The trend indicates an increase in the number of children referred to Social Services, with approximately 2,100 additional referrals over the period 6 April - 30 Nov. compared to 2019.

OFFICIAL – SENSITIVE

13 08/12/2020

INQ000065891_0013

Theme – Mobility

TIME SPENT OUTSIDE RESIDENTIAL AREA (data up to 5th Dec '20)

source: Cabinet Office Dashboard

OFFICIAL SENSITIVE: DO NOT SHARE WITHOUT PERMISSION



Notes

- The two blue lines represent daily and 7-day rolling average.
- 'Residential area' varies from 100m (in the most densely populated locations) to 5km.

Observations

- At 5th December, time spent outside the residential area was 5% higher than the pre-Covid baseline.
- Changes to time spent outside residential area since mid-to-late August have been marginal. This coincides with the return of schools.
- Despite closures of hospitality, retail etc. the latest restrictions appear not to have resulted in an increase in time spent at home, albeit more time may now be spent in 'lower risk' settings.

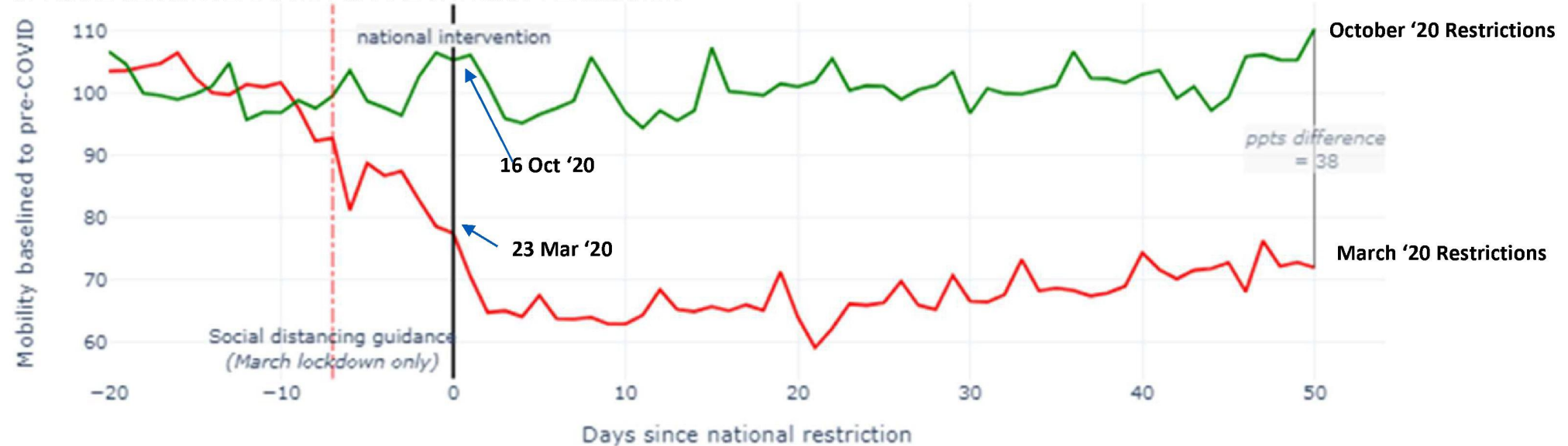
OFFICIAL – SENSITIVE

Theme – Mobility

TIME SPENT OUTSIDE RESIDENTIAL AREA (data up to 5th Dec '20)

source: Cabinet Office Dashboard

OFFICIAL SENSITIVE: DO NOT SHARE WITHOUT PERMISSION



Notes

- The two lines represent two separate events: i.e. the restrictions coming into effect in March '20 and October '20
- The horizontal axis shows the change in time spent outside residential area in the run-up to restrictions coming into effect and 50 days beyond.

Observations

- The first restrictions had a much greater impact on mobility with time spent outside the residential area reducing by more than 30% from pre-Covid levels.
- From a behavioral perspective it is of interest that the impact of the announcement in March was followed by a reduction in mobility whereas, the announcement in October was followed by an increase in mobility.
- The October restrictions do not appear to have had the same effect - this may be due to the major difference between the two sets of restrictions i.e. schools remain in operation under current restrictions.

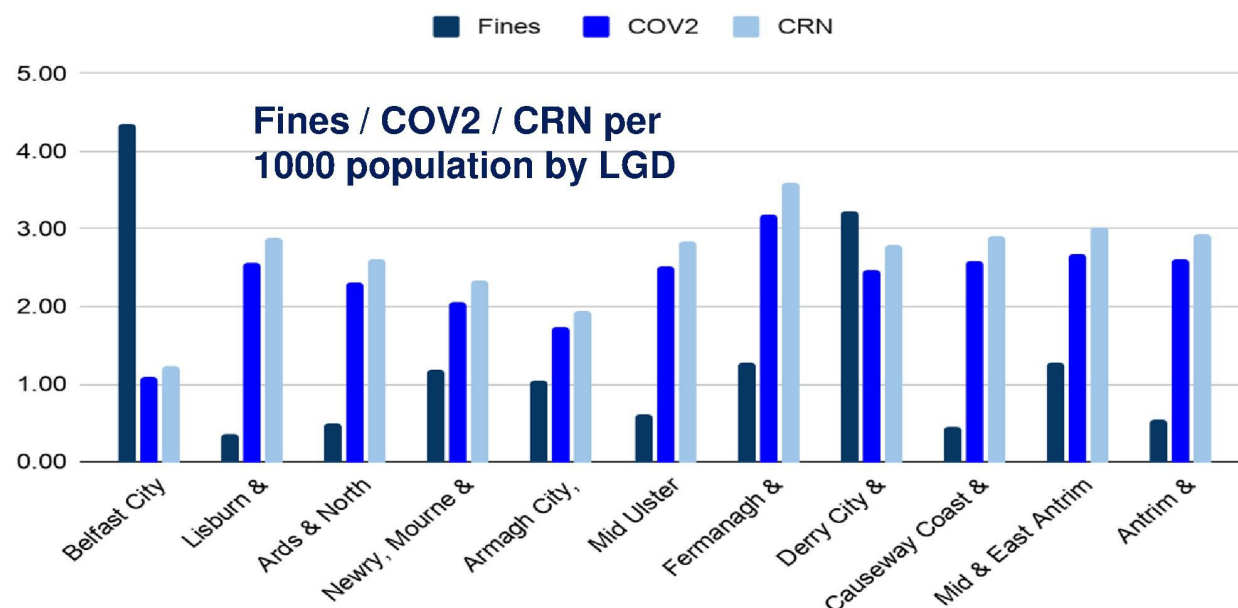
OFFICIAL – SENSITIVE

Theme – Justice

ISSUES			
	Description	Owner	BRAG
1	NIPS have seen a significant number of positive cases amongst staff during the second wave. As at 07.12.20 NIPS have 44 operational staff self-isolating – increase from 43 last week.	DoJ	A

RECENT ACTIONS	
	Decision
1	Testing: 1,804 prisoners have been tested up to 01.12.20. All committals into NIPS establishments are placed into an isolation area for 14 days to limit the potential spread of infection.
2	NIPS has formal testing and contact tracing procedures in place which are proving very effective. NIPS have introduced the wearing of face coverings for staff and temperature checking at each establishment.

Enforcement of the Covid Regulations from March to 7 Dec 2020 Source: DoJ SitRep return 7 Dec '20



Significantly more fines issued per 1000 population in Belfast, compared to other LGDs.

More likely to receive a warning (CRN & COV2) in all other LGDs, except Belfast and Derry City & Strabane.

Note: Fines include COV1, COV2, COV3, COV4 and COV5

COV1 - indoor or outdoor gatherings breaching the allowed maximum number of people. Now replaced by COV4 fines: £200 penalty, reduced to £100 if paid within 14 days

COV2 - in effect amounts to a 'warning'

COV3 - Failure to isolate (£1,000 fine)

COV5 - issued to a business and/or premises as required for breach of the regulations, starting at £1,000 to a maximum of £10,000

Community Resolution Notice - no fine, just a warning

OFFICIAL – SENSITIVE

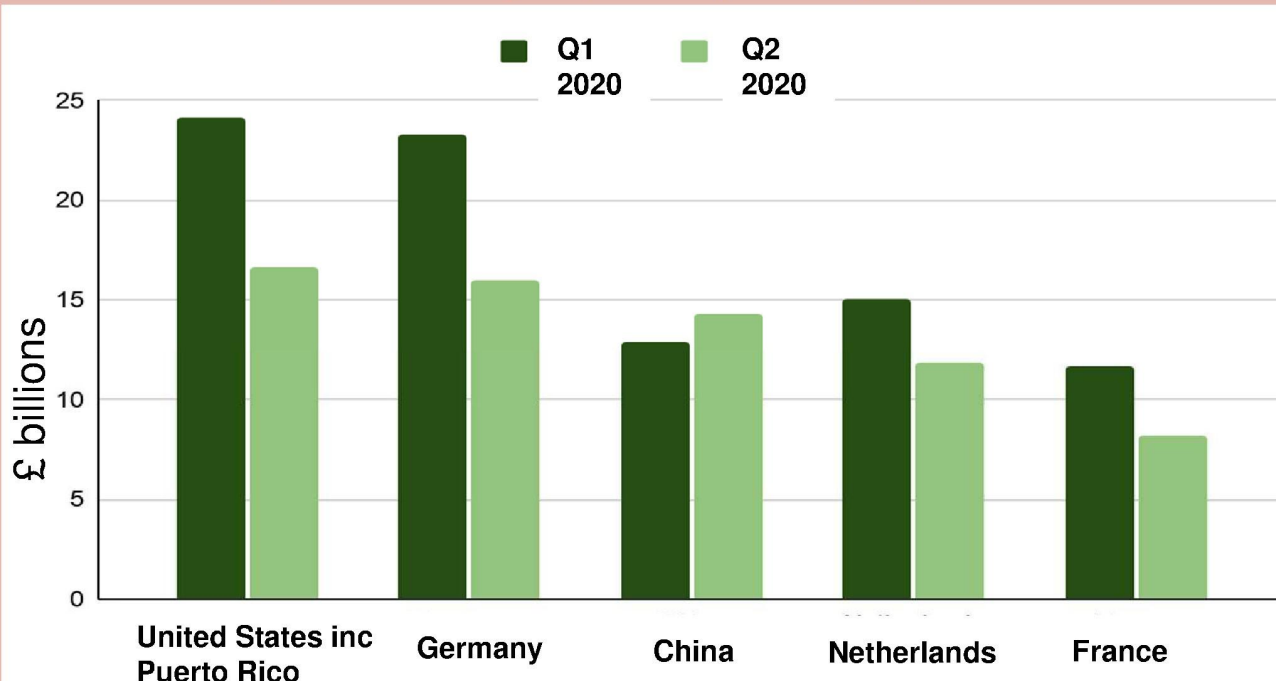
16 08/12/2020

INQ000065891_0016

Theme – Economy and Infrastructure

ISSUES				RECENT ACTIONS	
	Description	Owner	BRAG		Decision
1	The further restrictions imposed, with parts of the economy having to close again, means businesses will likely have to put people back on furlough and more self-employed workers will have to claim the third round of the self-employment grant.	DfE	R	1	DfE opened the Newly Self-Employed Support Scheme (NSESS) on 3 December. The Scheme will provide a one-off taxable grant of £3,500, which will enable support to be provided to approximately 2,900 newly self-employed individuals.
2	Continued low public transport passenger numbers on the week beginning 16th November at 40% of 2019 levels, which is up 1% from the previous week.	DfI	A	2	CRBSS Part A: 3,592 applications have been submitted for support, with payments made to 2,181 applicants totalling approximately £10.3m. 218 applications have been rejected to date.

UK total trade in goods excluding unspecified goods, top 5 partner countries Source: ONS UK Trading Partners 2 Dec 20



The UK's top five trading partners accounted for 46.0% of total trade in goods, excluding unspecified goods, in the first half of 2020. China was the only country in the top five that increased their total trade in goods with the UK between Quarter 1 2020 and Quarter 2 2020. This was owing to a 17.2% increase in goods imported from China during this period.

OFFICIAL – SENSITIVE

17 08/12/2020

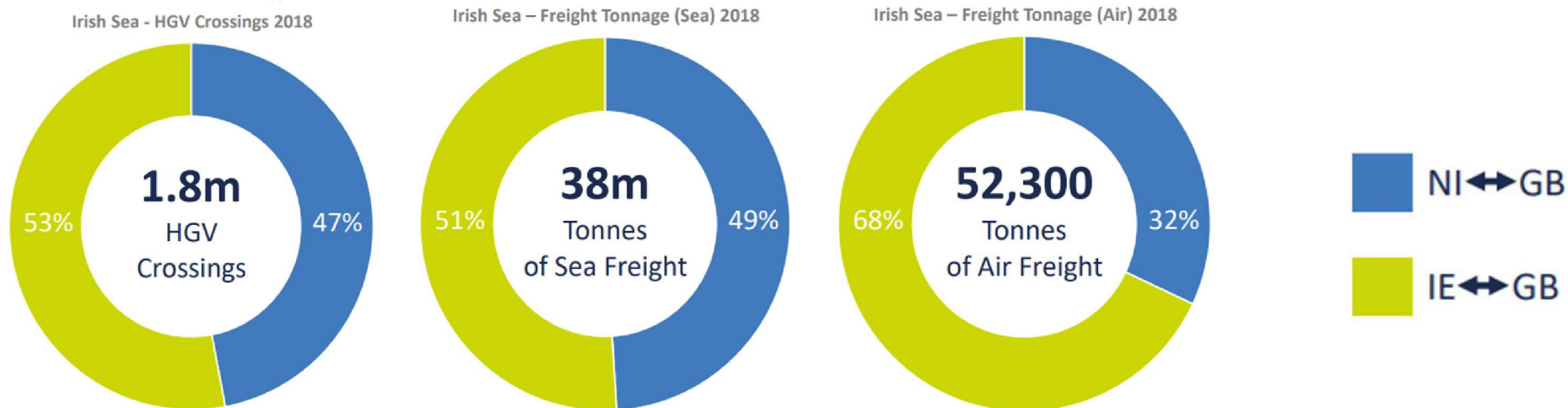
INQ000065891_0017

Theme – Economy and Infrastructure: EU Exit

Overview of Trade between NI, ROI & GB

sources: NISRA, Overview of Trade with GB (October 2019) NISRA, Cross-Border Supply Chain Survey Report (June 2018)

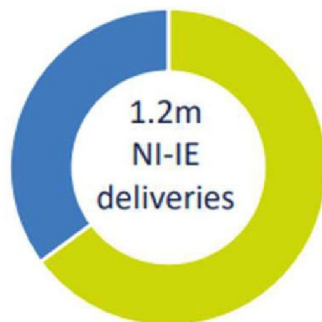
Irish Sea Crossings



Cross Border Deliveries

Over 1 million cross-border deliveries per annum...

- NI export deliveries to Ireland
- NI import deliveries from Ireland



Nearly three quarters of export deliveries made by small businesses...

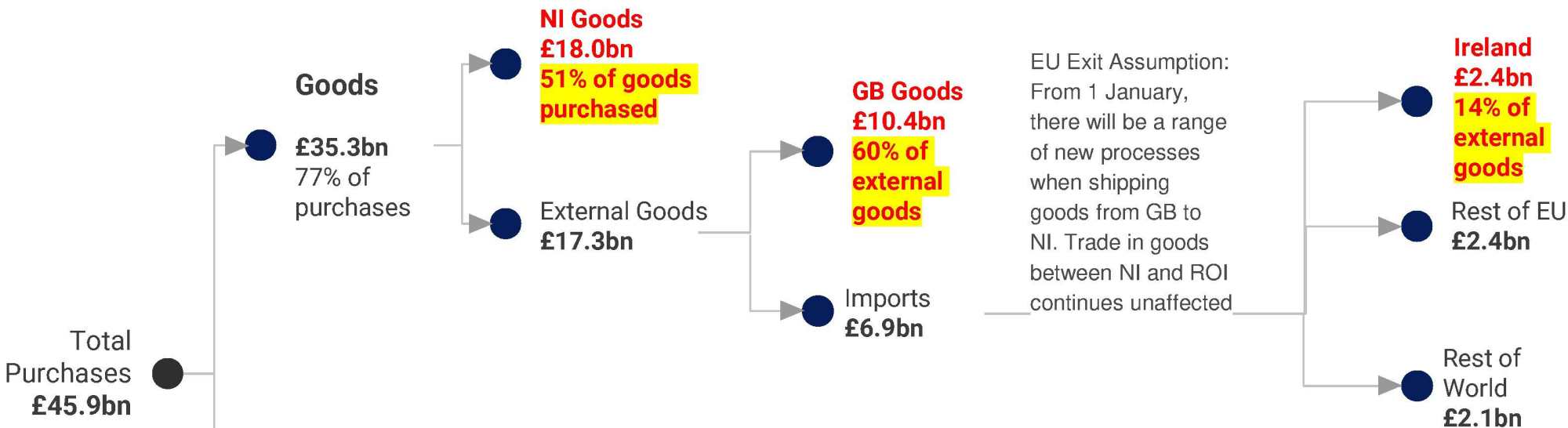
- Small (0-49 employees)
- Medium (50-249 employees)
- Large (250+ employees)



Theme – Economy and Infrastructure: EU Exit

Overview of NI Purchases

source: <https://www.nisra.gov.uk/sites/nisra.gov.uk/files/publications/Overview-of-NI-Trade-June-2020.pdf>



Food & Drink Federation member survey, 20-30th October 2020

source: www.fdf.org.uk/publicgeneral/fdf-business-readiness-survey-october.pdf

After the transition period ends, which best describes your plans to supply from Great Britain into Northern Ireland? [includes only businesses selling into NI]

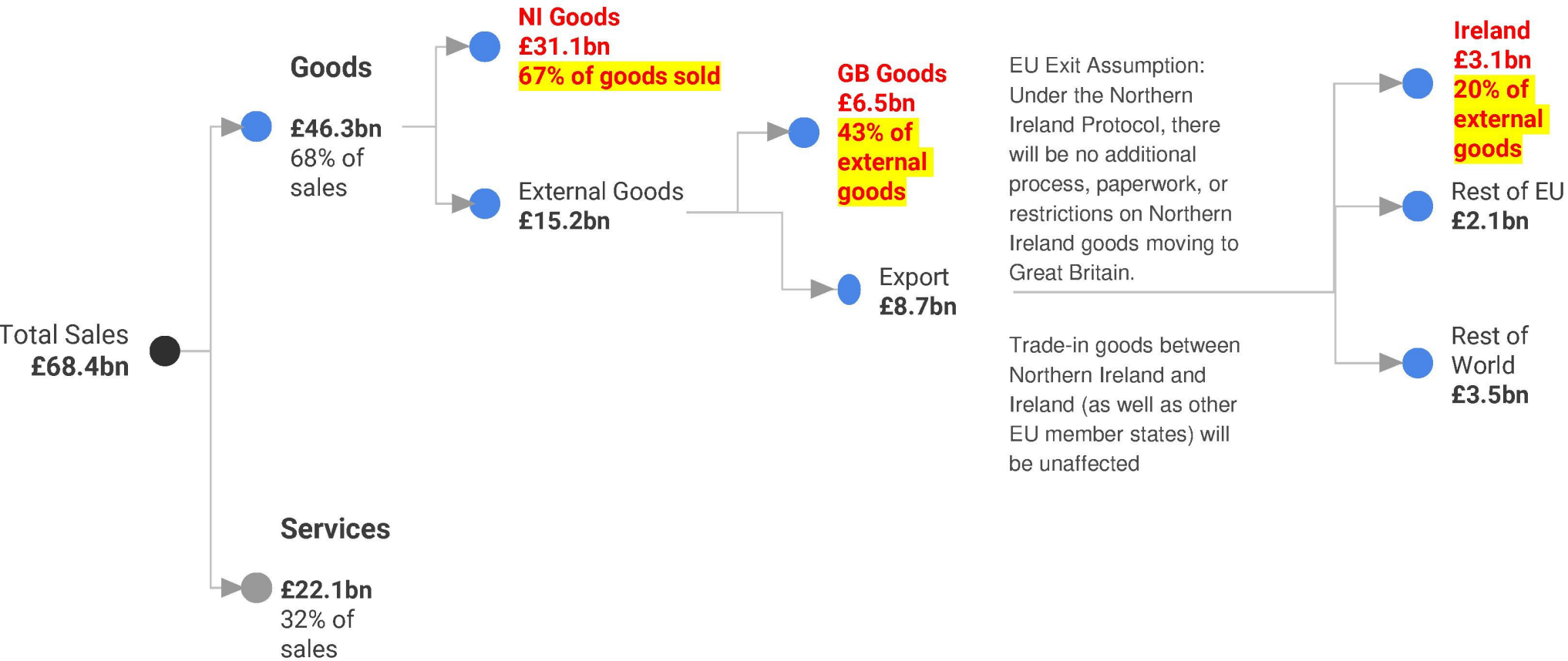
More than one in five are planning to pause deliveries while they adapt to meet new, and often unconfirmed requirements, or while they assess the continued viability of supplying into Northern Ireland. Nearly 10% are planning to reduce the volumes of goods they sell from GB into NI, while one in eight don't yet know how it will impact on their business.

No changes – we will continue to supply from GB into NI	57.8%
We plan to pause deliveries from GB to NI while we adapt product labelling or supply chains	15.6%
Don't know	13.3%
We plan to reduce the volume of goods sold from GB to NI	8.9%
We plan to pause deliveries from GB to NI while we assess if it remains a viable market	4.4%

Theme – Economy and Infrastructure: EU Exit

Overview of NI Sales

source: <https://www.nisra.gov.uk/sites/nisra.gov.uk/files/publications/Overview-of-NI-Trade-June-2020.pdf>



Access List

The NI SitRep and its content is **not** public facing and should not therefore be shared. Those in receipt of the document should ensure it is appropriately handled in line with Government Security Classification Guidance.

- NI Executive Ministers
- HOCS
- CCG O
- NICS Permanent Secretaries
- NI EPG
- PSNI
- SOLACE
- NIHUB / Civil Contingencies
- TEO COVID Recovery
- NICS DOCs / Emergency Planning Teams
- DSO

SitRep@NIHUB.gov.uk

Permission should be sought for any circulation beyond the agreed Access List, from sitrep@nihub.gov.uk

