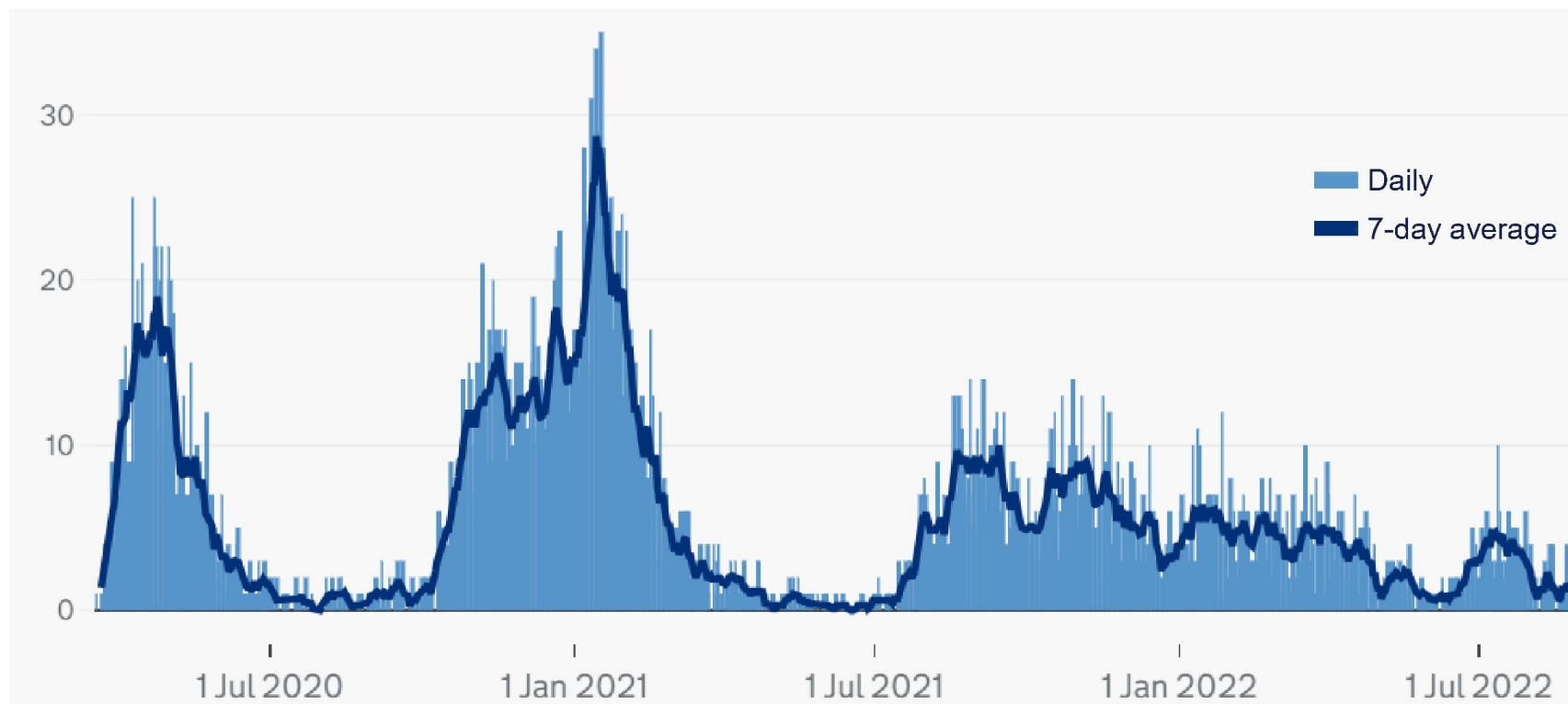




# **Covid and excess deaths**

Northern Ireland

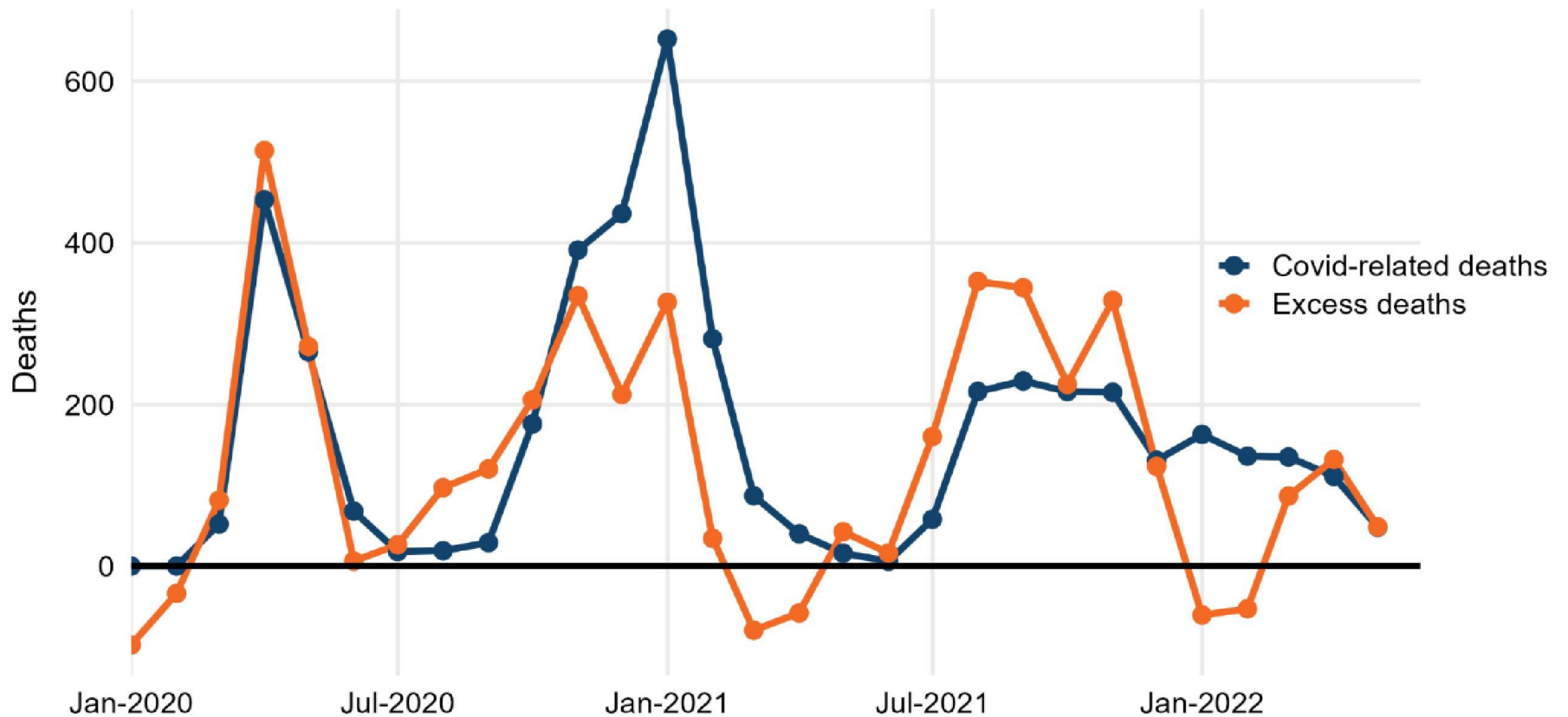
## Covid deaths in NI - daily



Source: UKHSA dashboard - deaths with Covid mentioned on death certificate, by date of death

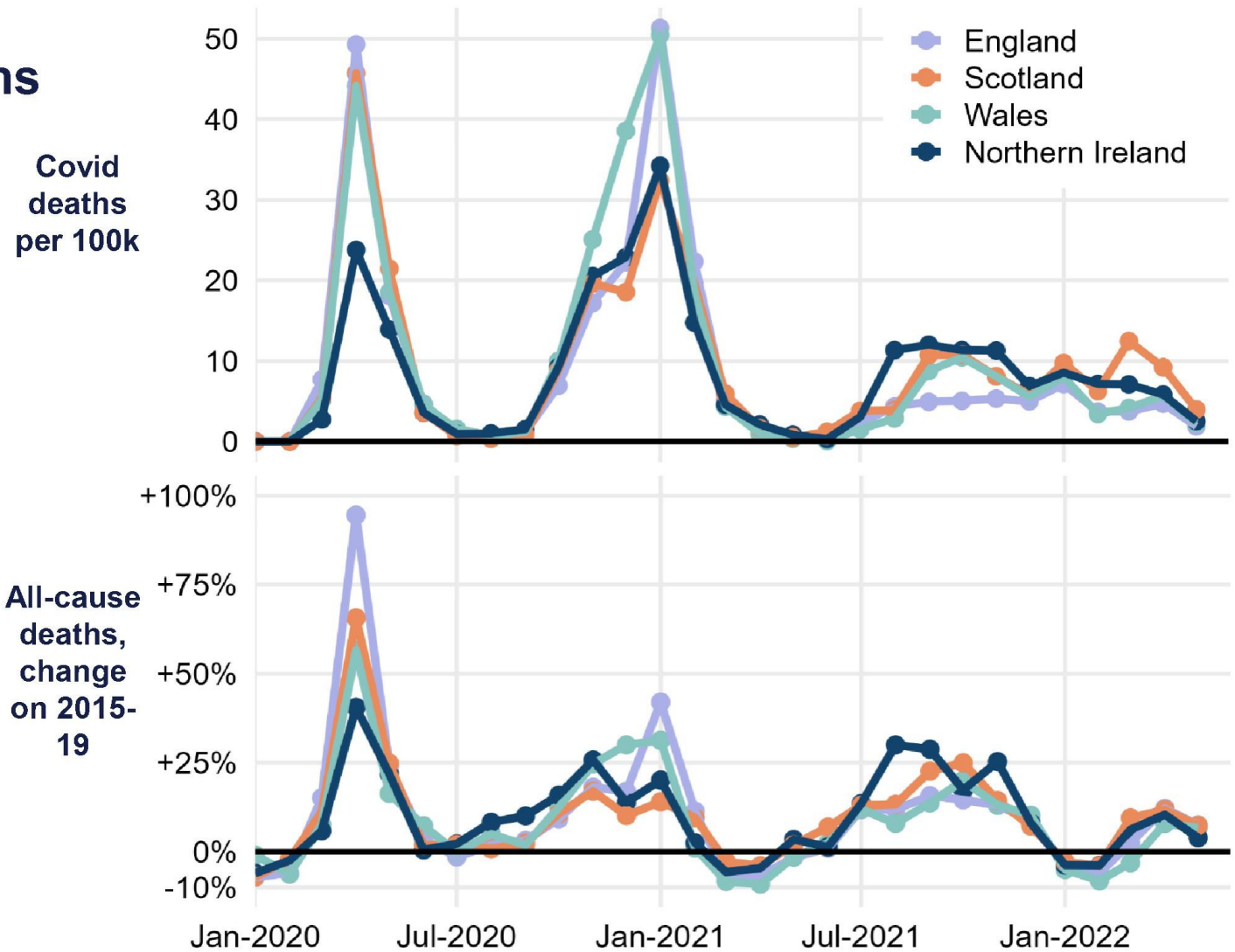
INQ000472397\_0002

## Covid deaths and excess deaths in NI - monthly



Source: NISRA data Notes: excess deaths here means more deaths overall for that month than the average for that month in 2015-19

# Covid and excess deaths - monthly

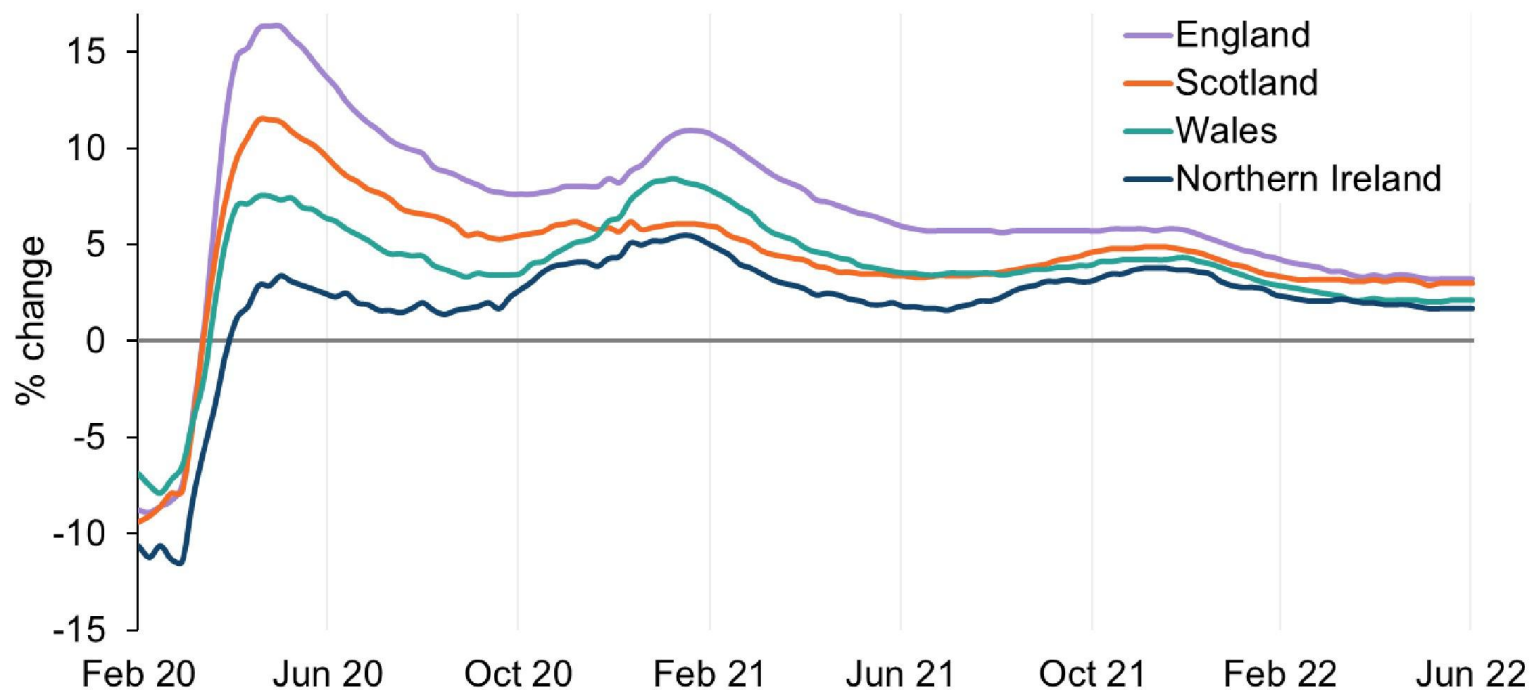


Source: ONS, NRS, NISRA

INQ000472397\_0004

# Age-standardised mortality

Cumulative mortality rates compared to 2015-19



Source: ONS Notes: Shows deaths added up from January 2020 onwards (i.e. cumulatively) and compares this to the amount of deaths that occurred for the same amount of time in 2015-19.

## Sources and notes

Measure	Page	Notes	Source(s)	Link
Covid deaths in NI	2	Deaths with Covid-19 mentioned on the death certificate, shown by date of death	UKHSA Covid-19 dashboard	<a href="https://coronavirus.data.gov.uk/">https://coronavirus.data.gov.uk/</a> Accessed: 29/02/2024  Note: dashboard now removed, equivalent data available from: <a href="https://ukhsa-dashboard.data.gov.uk/covid-19-archive-data-download">https://ukhsa-dashboard.data.gov.uk/covid-19-archive-data-download</a> or <a href="https://datavis.nisra.gov.uk/vitalstatistics/weekly-deaths-dashboard.html">https://datavis.nisra.gov.uk/vitalstatistics/weekly-deaths-dashboard.html</a>
Covid deaths and excess deaths in NI - monthly	3	Deaths in 2020-22 compared to the average for each month in 2015-19. Based on date of death, taking account of latest available death registrations up to and including to 22/02/2023.	NISRA, Excess deaths - tables - December 2022. Table 1: Deaths by month for 2015-22. Published 09/03/2023	<a href="https://www.nisra.gov.uk/publications/excess-mortality-covid-19-related-deaths-december-2022">https://www.nisra.gov.uk/publications/excess-mortality-covid-19-related-deaths-december-2022</a> Accessed: 18/03/2024

## Sources and notes

Measure	Page	Notes	Source(s)	Link
Covid and excess deaths - monthly	4	<p>Shows deaths by month of death. Per capita rates of Covid deaths calculated using ONS population estimates for mid-2021 (due to Scotland's 2022 estimates not having been rebased yet).</p> <p>Data shown include deaths registered up to: 07/08/2023 in Eng &amp; Wales, 22/11/2023 in Scotland, and 22/02/2023 in Northern Ireland. Although the deaths shown for Northern Ireland had somewhat less time to be registered than the rest of the UK (and therefore may show a slight underestimate), this only meaningfully affects figures for the latter half of 2022, which are not shown. (This can be seen in assessing the difference between columns G and H of the table 1a of the NISRA publication cited to the right.)</p>	<p><b>England and Wales:</b> Office for National statistics, July 2023 dataset for Monthly Mortality Analysis. Sheets 16a and 16b.</p> <p><b>Scotland:</b> National Records of Scotland, monthly mortality October 2023. Sheet 'table M1'</p> <p><b>Northern Ireland:</b> NISRA, excess mortality &amp; Covid deaths Dec 2022, sheet T1. 09/03/2023</p> <p>Population estimates: Office for National Statistics population estimate time series dataset, release date 26/03/2024.</p>	<p><a href="https://www.ons.gov.uk/peoplepopulationandcommunity/birthsdeathsandmarriages/deaths/datasets/monthlymortalityanalysisenglandandwales">https://www.ons.gov.uk/peoplepopulationandcommunity/birthsdeathsandmarriages/deaths/datasets/monthlymortalityanalysisenglandandwales</a> Accessed: 03/04/2024</p> <p><a href="https://www.nrscotland.gov.uk/files//statistics/vital-events/monthly-mortality/monthly-mortality-october-23-tab-1.xlsx">https://www.nrscotland.gov.uk/files//statistics/vital-events/monthly-mortality/monthly-mortality-october-23-tab-1.xlsx</a> Accessed: 13/12/2023</p> <p><a href="https://www.nisra.gov.uk/publications/excess-mortality-covid-19-related-deaths-december-2022">https://www.nisra.gov.uk/publications/excess-mortality-covid-19-related-deaths-december-2022</a> Access: 18/04/2024</p> <p><a href="https://www.ons.gov.uk/file?uri=/peoplepopulationandcommunity/populationandmigration/populationestimates/datasets/populationestimatestimeseriesdataset/current/populationestimatestimeseriesdataset.csv">https://www.ons.gov.uk/file?uri=/peoplepopulationandcommunity/populationandmigration/populationestimates/datasets/populationestimatestimeseriesdataset/current/populationestimatestimeseriesdataset.csv</a> Accessed: 04/04/2024</p>
Cumulative age standardised mortality (UK)	5	<p>Data based on date of registration of death. Data is standardised to the same age structure (European Standard 2013), thereby removing differences in age profile between nations. The chart shows age-standardised mortality added up each week from January 2020 onwards (i.e. cumulative mortality) and compares this to total level of mortality for the same duration of time in 2015-19. (E.g. at Feb 2021 this shows how much higher mortality rates were across the whole period Jan 2020-Feb 2021 compared to the total mortality for same amount of time in 2015-19).</p>	<p>Office for National Statistics. Dataset for Comparisons of all-cause mortality between European countries and regions. Publication date: 25 September 2023. Sheet 14 of tables.</p>	<p><a href="https://www.ons.gov.uk/peoplepopulationandcommunity/birthsdeathsandmarriages/deaths/datasets/comparisons-of-all-cause-mortality-between-european-countries-and-regions">https://www.ons.gov.uk/peoplepopulationandcommunity/birthsdeathsandmarriages/deaths/datasets/comparisons-of-all-cause-mortality-between-european-countries-and-regions</a> Accessed: 02/10/2023</p>