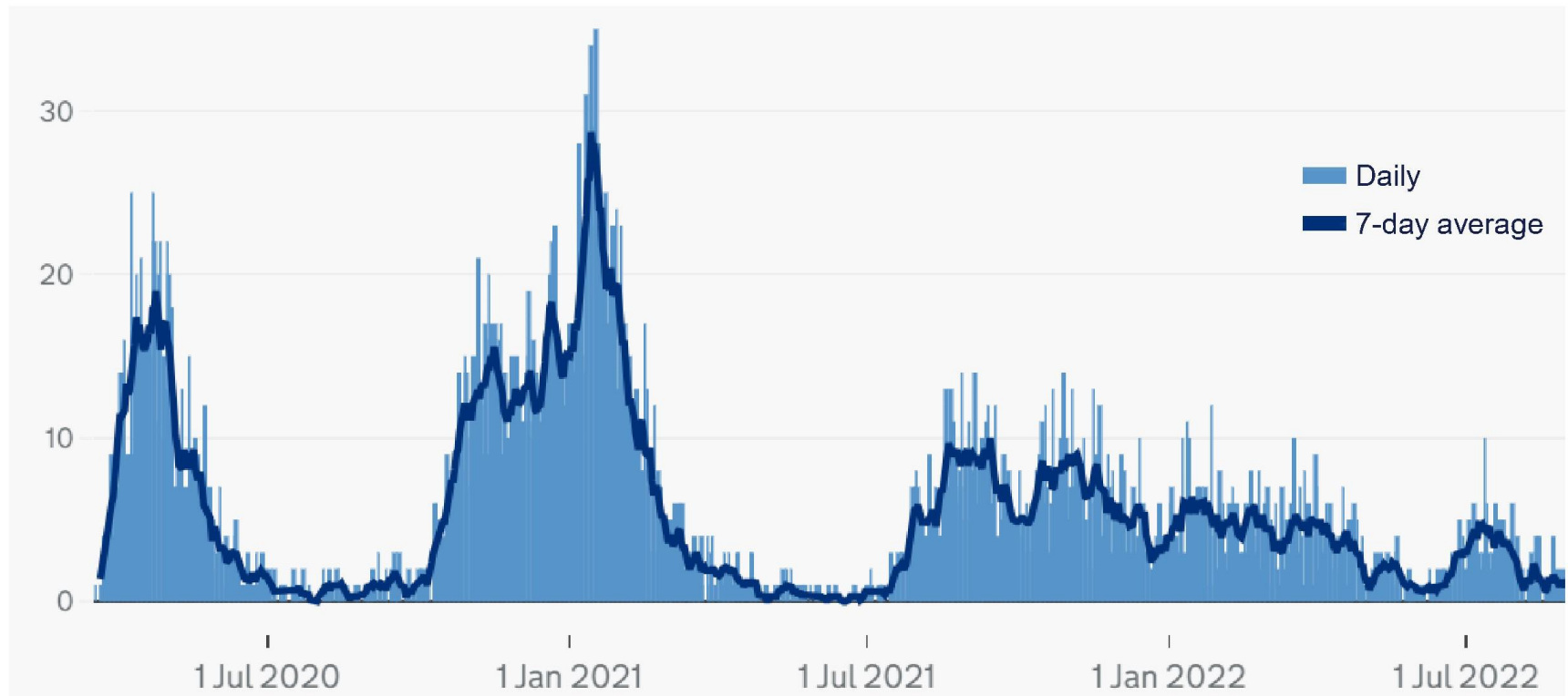




# **Covid and excess deaths**

Northern Ireland

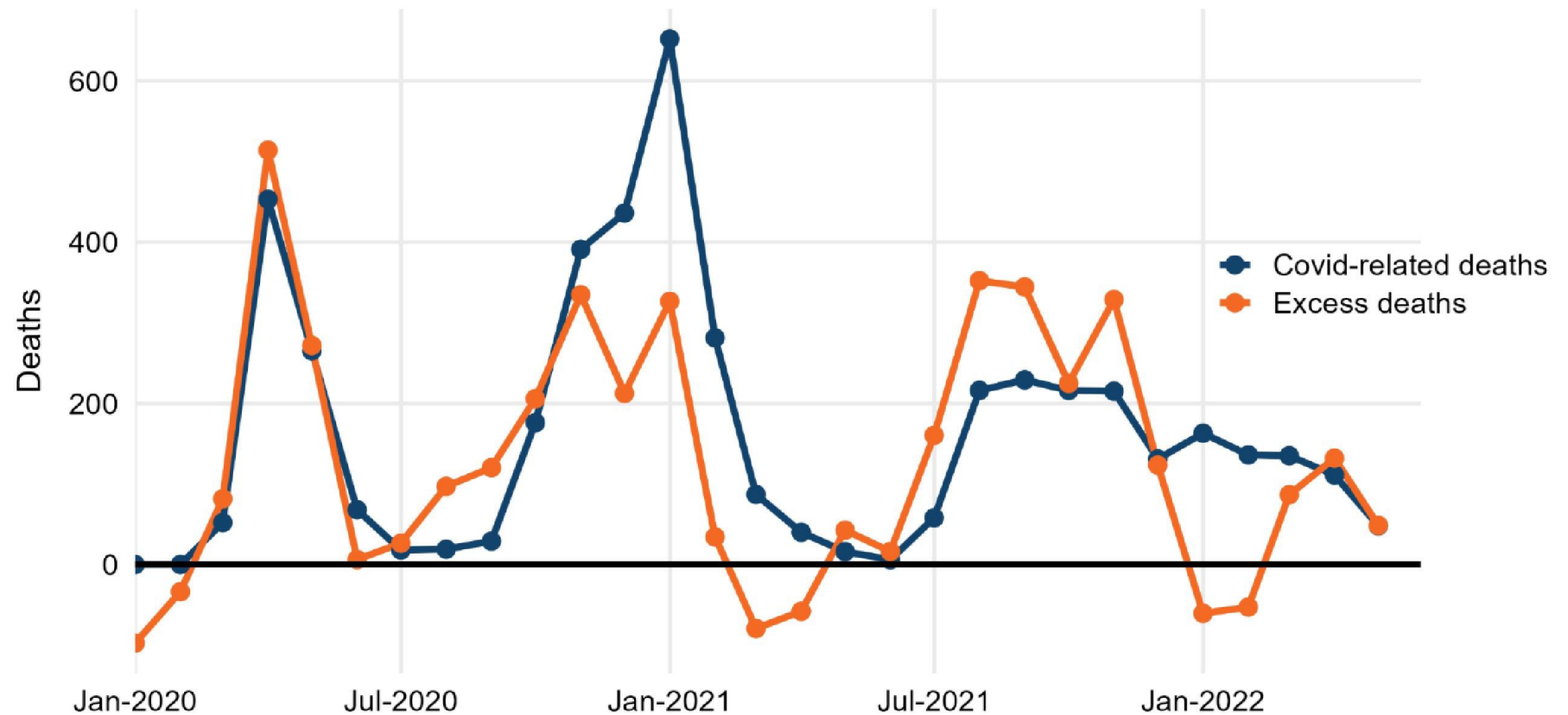
## Covid deaths in NI - daily



Source: UKHSA dashboard - deaths with Covid mentioned on death certificate, by date of death

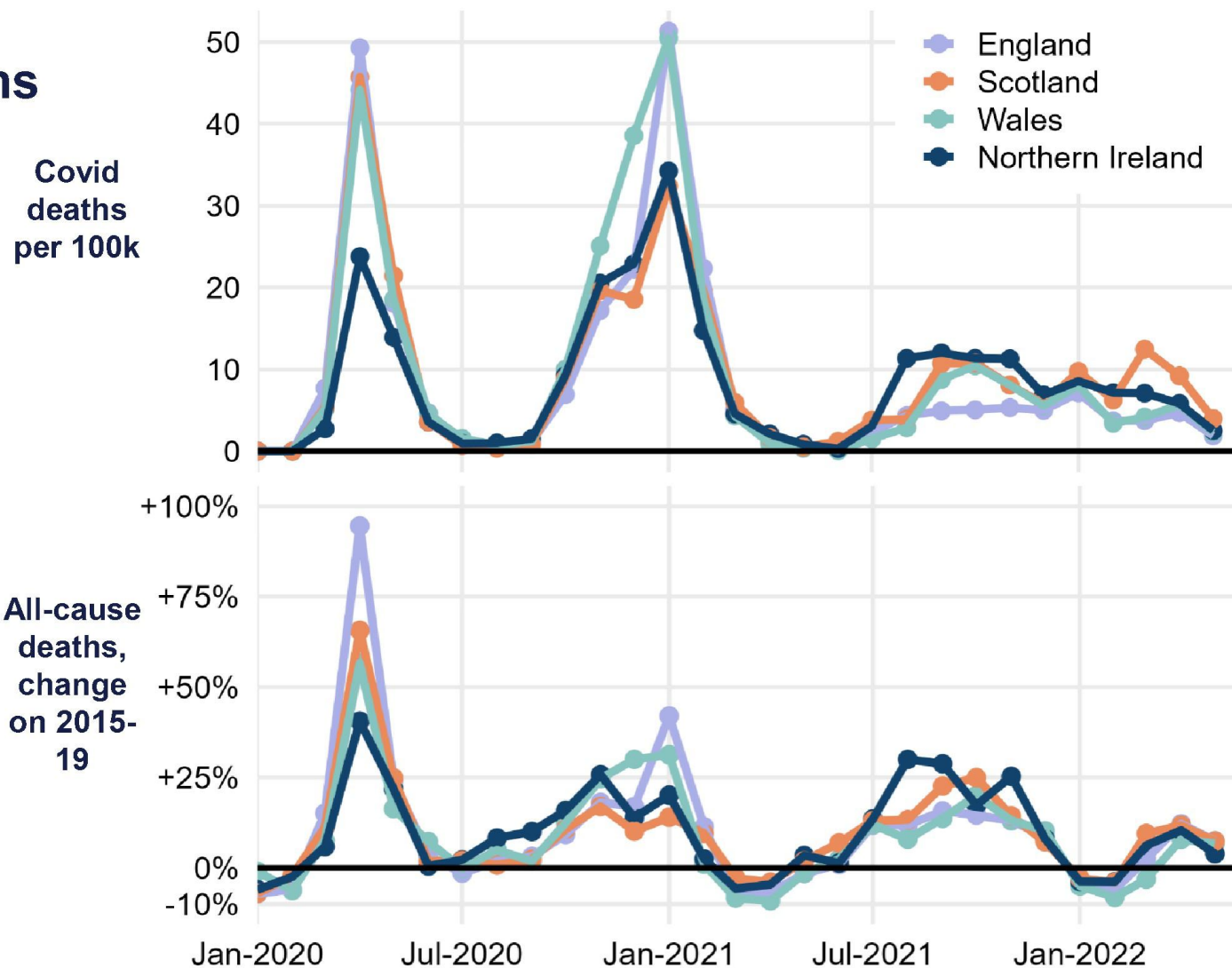
INQ000472397\_0002

## Covid deaths and excess deaths in NI - monthly



Source: NISRA data Notes: excess deaths here means more deaths overall for that month than the average for that month in 2015-19

# Covid and excess deaths - monthly

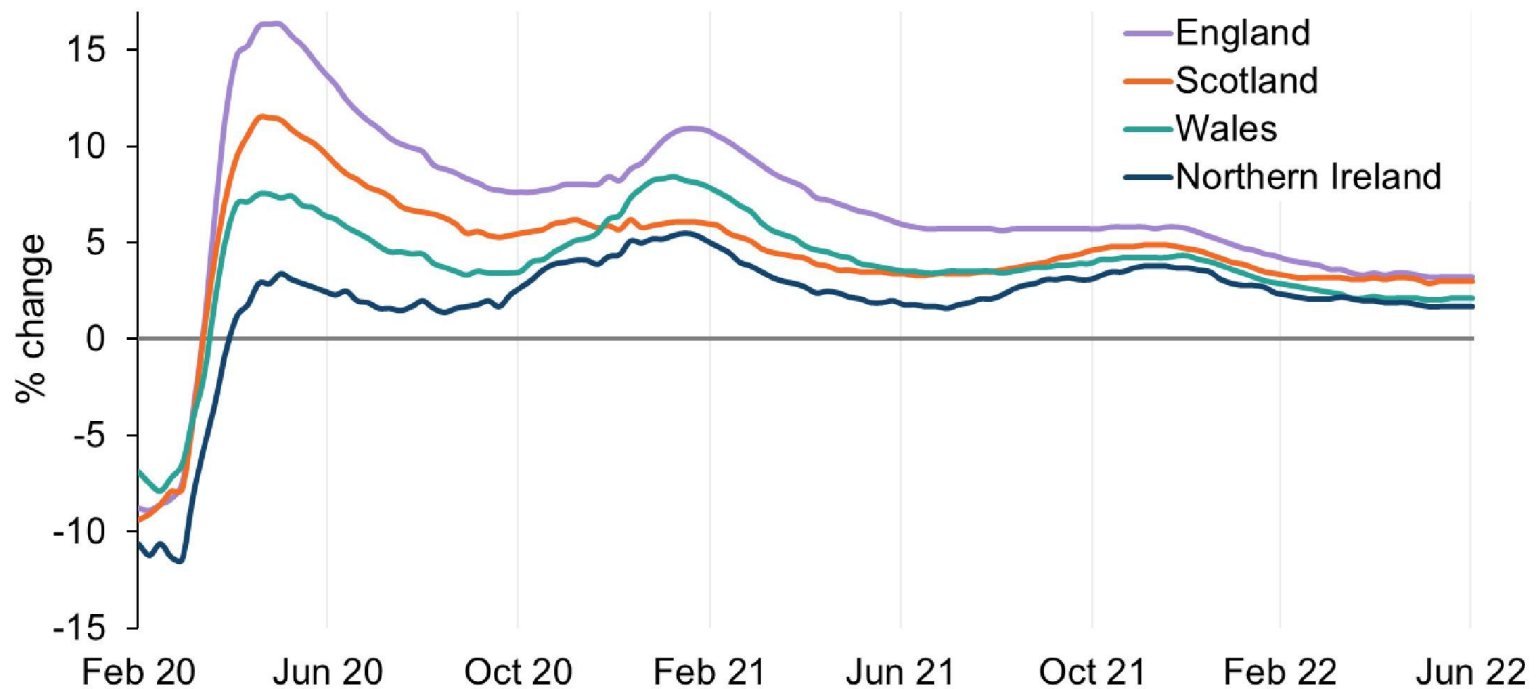


Source: ONS, NRS, NISRA

INQ000472397\_0004

# Age-standardised mortality

Cumulative mortality rates compared to 2015-19



Source: ONS Notes: Shows deaths added up from January 2020 onwards (i.e. cumulatively) and compares this to the amount of deaths that occurred for the same amount of time in 2015-19.

INQ000472397\_0005