

Pre-Christmas Policy Modelling						Cumulative		
						Hospital admissions (incl. ICU)	ICU Admissions only	Deaths
2/12	No intervention, contact scaling 0.7	23/12	28/12	Background Rt1.3	28/2	8,570	1,030	2,520
2/12	Dec Tier 2, contact scaling 0.7	23/12	28/12	Background Rt1.3	28/2	6,920	830	2,030
2/12	Dec Tier 3, contact scaling 0.7	23/12	28/12	Background Rt1.3	28/2	4,860	580	1,460
2/12		23/12	28/12	Background Rt1.4	28/2	11,410	1,370	3,270
2/12	Dec Tier 2, contact scaling 0.75	23/12	28/12	Background Rt1.4	28/2	8,850	1,060	2,510
2/12	Dec Tier 3, contact scaling 0.75	23/12	28/12	Background Rt1.4	28/2	6,400	770	1,820

Figure 1. Pre-Christmas policy modelling scenarios.

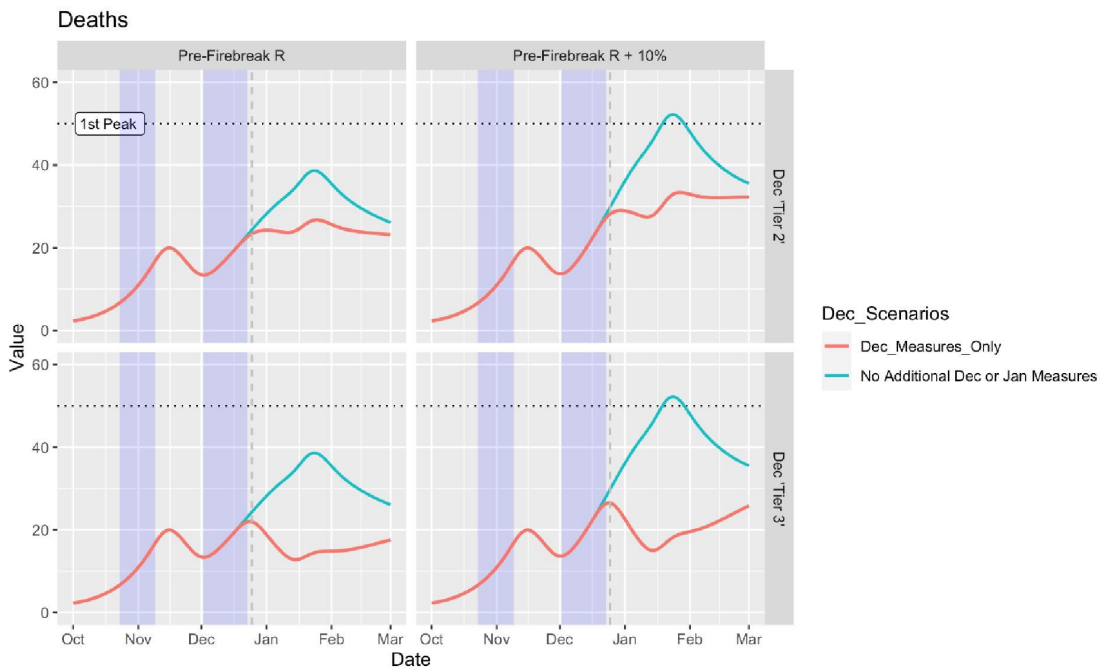


Figure 2. Deaths per day between October and March 2021 in different pre-Christmas scenarios (Source: Swansea University COVID-19 Modelling)

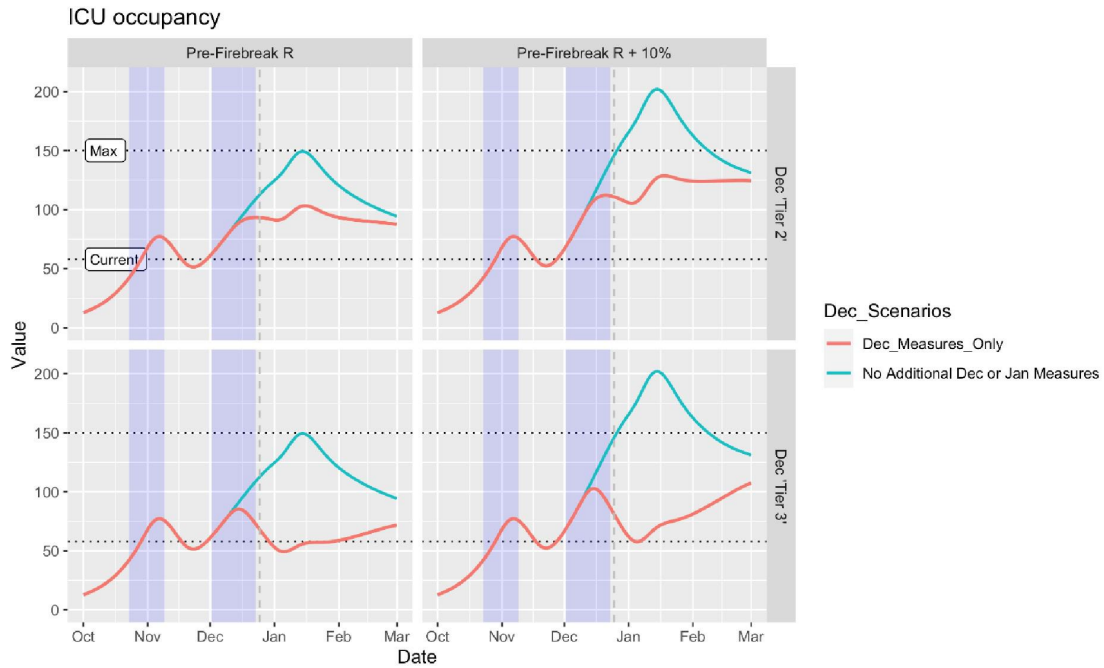


Figure 3. ICU Occupancy between October and March 2021 in different pre-Christmas scenarios (Source: Swansea University COVID-19 Modelling)

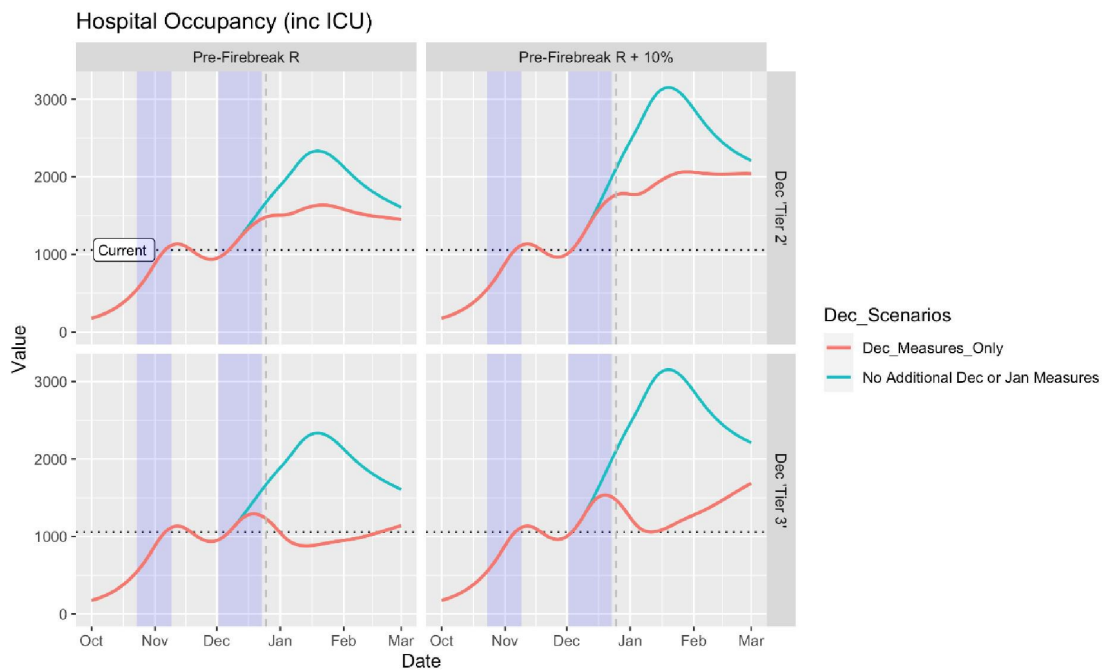


Figure 4. Hospital bed occupancy between October and March 2021 in different pre-Christmas scenarios (Source: Swansea University COVID-19 Modelling)