



(/)

Schools & departments (<https://www.ed.ac.uk/schools-departments/>) MyEd (<https://www.myed.ed.ac.uk/>)



(/usher/eave-ii)

Usher Institute (<https://www.ed.ac.uk/usher>)

EAVE II (/USHER/EAVE-II)

☰ Menu

Home (/) > Usher Institute (/usher) > EAVE II (/usher/eave-ii) > Key outputs

[Contact us \(/usher/eave-ii/contact-us\)](/usher/eave-ii/contact-us)

Key outputs

The EAVE II study has published a number of academic papers, and analysis from EAVE II work has been included in Scottish Government reports to inform the pandemic response in Scotland.

Research Publications



(/usher/eave-ii/key-outputs/our-publications)

See our findings in academic paper publications.

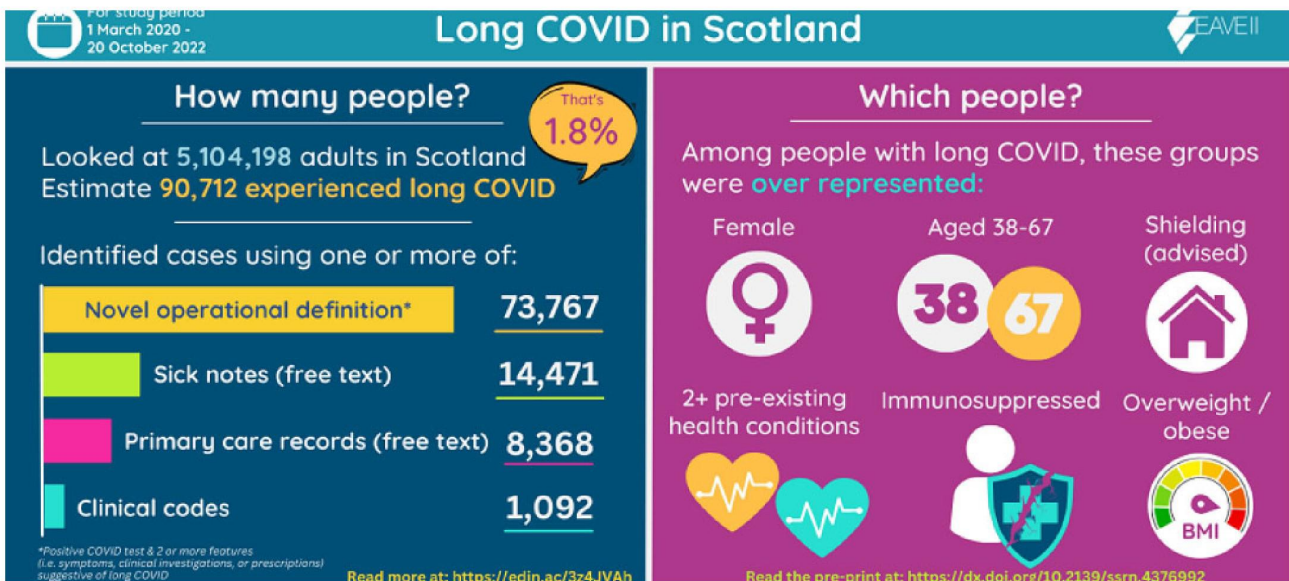
Protocol and Analyses



(/usher/eave-ii/key-outputs/protocol-and-analysis)

The EAVE II team is committed to openness and transparency. Key information such as the study protocol, statistical analysis plan and code used in analyses are available on this website.

Infographics



(/usher/eave-ii/key-outputs/infographics)

Several infographics have been created to accompany EAVE II's high-impact and high-interest papers to provide a brief overview of their key findings and results. These images can now be downloaded as high-quality PDF documents.

Patient & Public Involvement Report (EAVE II)



([usher/eave-ii/key-outputs/eave-ii-patient-and-public-involvement-report](#))

Read our report "Patient and Public Involvement in EAVE II: the first two years" to find out more about the experiences and contributions of our Public Advisory Group .

Research Insights: health data - what's in it for you?

([usher/eave-ii/key-outputs/research-insights-health-data](#))

A webinar organised as part of the University of Edinburgh's College of Medicine and Veterinary Medicine's Research Insights series. In this episode, researchers and PPI members of the EAVE II team explore What is health data? How does information about people's health help to inform public health policy decisions? And how is data kept safe and secure?

External reports featuring or referencing EAVE II

+ National Core Studies Immunity programme Patient and Public Involvement report

+ The Scottish Parliament's COVID-19 Recovery Committee's Road to recovery: the impact of the pandemic on Scotland's labour market report

Share



This article was published on 3 Apr, 2023

THE UNIVERSITY OF EDINBURGH

Terms & conditions (<https://www.ed.ac.uk/about/website/website-terms-conditions>)

Privacy & cookies (<https://www.ed.ac.uk/about/website/privacy>)

Complaints procedure (<https://www.ed.ac.uk/university-secretary-group/complaint-handling-procedure>)

Modern slavery (<https://www.ed.ac.uk/sustainability/modern-slavery-statement>)

Website accessibility (<https://www.ed.ac.uk/about/website/accessibility>)

Freedom of information publication scheme (<https://www.ed.ac.uk/about/website/freedom-information>)

Data Protection (<https://www.ed.ac.uk/data-protection>)



<https://www.ed.ac.uk/about/mission-governance/affiliations>

[MyEd login ▶ \(https://www.myed.ed.ac.uk/\)](https://www.myed.ed.ac.uk/)

The University of Edinburgh is a charitable body, registered in Scotland, with registration number SC005336, VAT Registration Number GB 592 9507 00, and is acknowledged by the UK authorities as a "Recognised body (<https://www.gov.uk/guidance/recognised-uk-degrees>)" which has been granted degree awarding powers.

Unless explicitly stated otherwise, all material is copyright © The University of Edinburgh 2023.

[CMS login ▶ \(/user/login?destination=node/121473\)](/user/login?destination=node/121473)