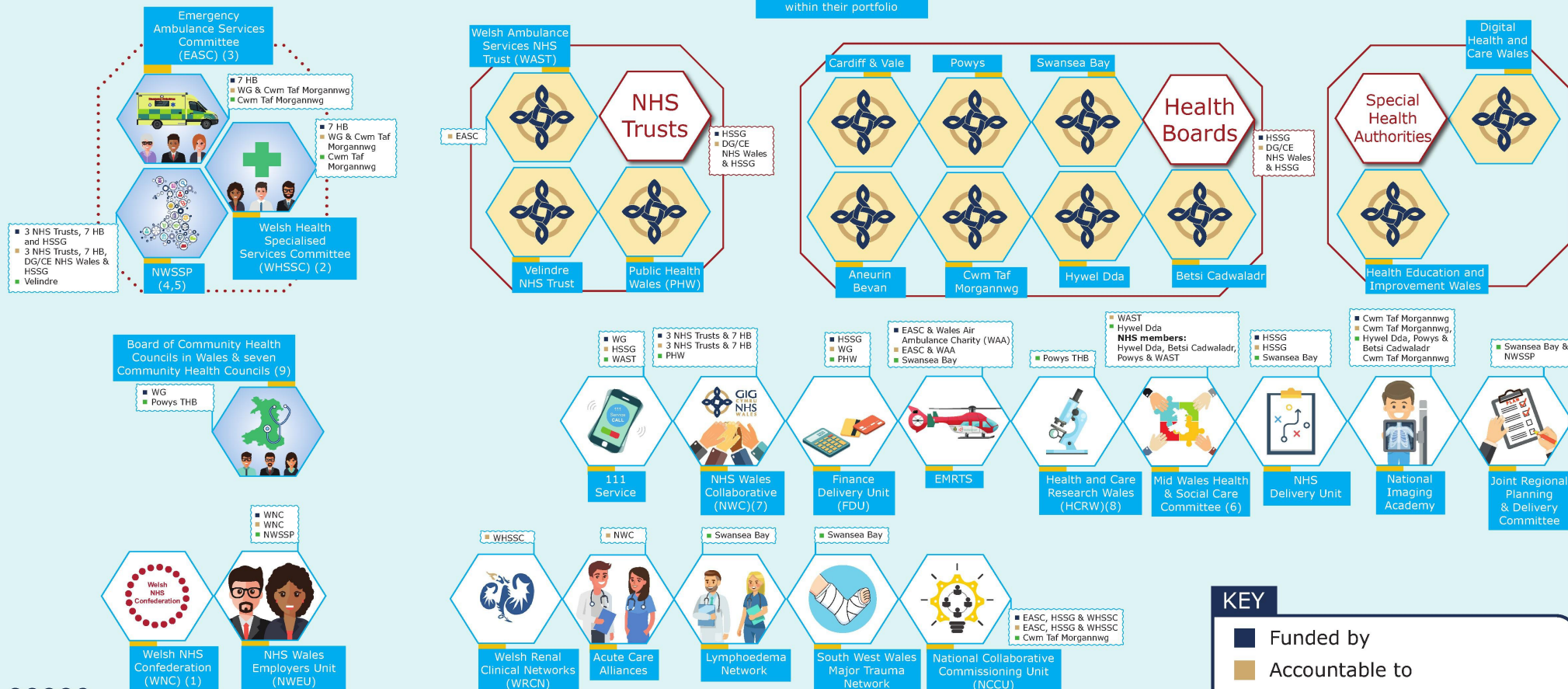


# Governance Map NHS Wales



## Index

- The Welsh NHS Confederation is a charity governed by a Board of Trustees.
- WHSCC Chair Accountable to the Minister for Health and Social Services.
- EASC Chair Accountable to the Minister for Health and Social Services.
- NWSSP Chair Accountable to the Partnership Committee.
- NWSSP Managing Director Accountable to Director General/ Chief Executive NHS Wales.
- Mid Wales Health & Social Care Committee Chair appointed by Minister.
- NHS Wales Collaborative consists of: Chief Executives Support Office (CESU), Programme Management Unit (PMU), South Wales Health Collaborative (SWHC). The Clinical Networks transferred to PHW on 1st October 2016.
- The National Institute for Social Care and Health (NISCHR) was rebranded Health and Care Research Wales in 2015.
- The Board of Community Health Councils in Wales is responsible for setting standards and monitoring the performance of the seven Community Health Councils, the conduct of members and performance of officers as well as operating a Complaints Procedure.