

# **LONDON SUMMIT ON COVID-19**

**SUMMARY SLIDES ON ESCALATION, EPIDEMIOLOGY AND RESPONSE**

## **LONDON OUTBREAK ESCALATION PROCESS**

### **OBJECTIVES/ CONTENT**

1. Agree escalation process
2. Epidemiology and response update
3. Current, and further action and support needed in London

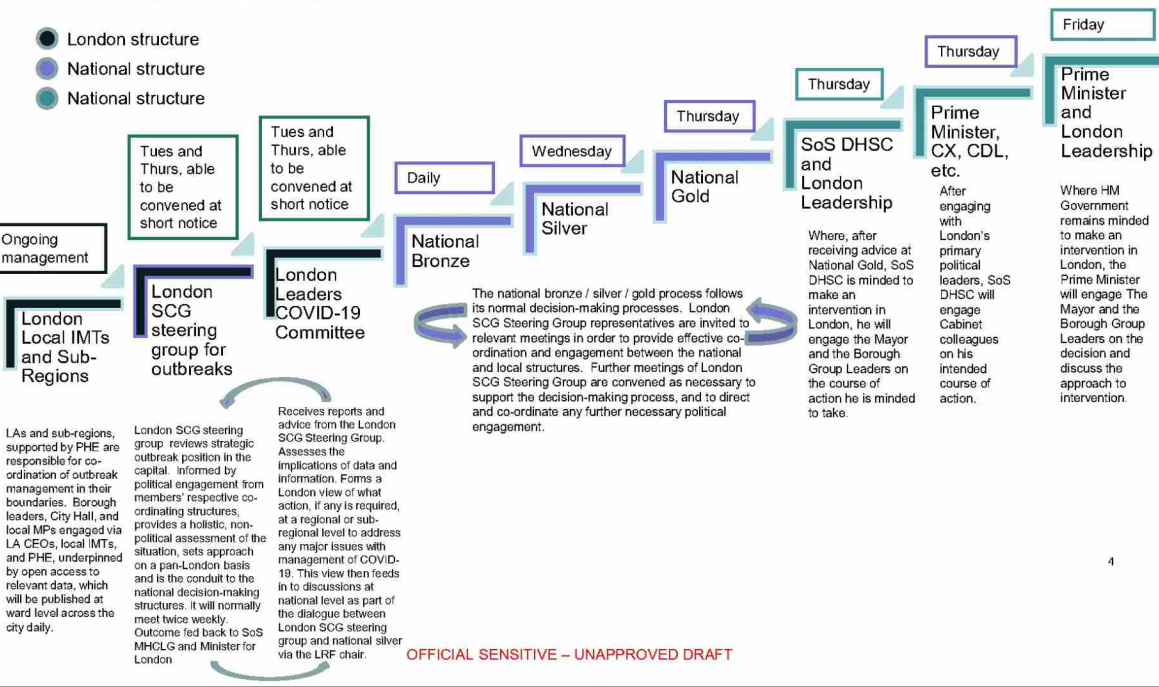
# **LONDON OUTBREAK ESCALATION PROCESS**

**UNAPPROVED DRAFT**

SEPTEMBER 2020

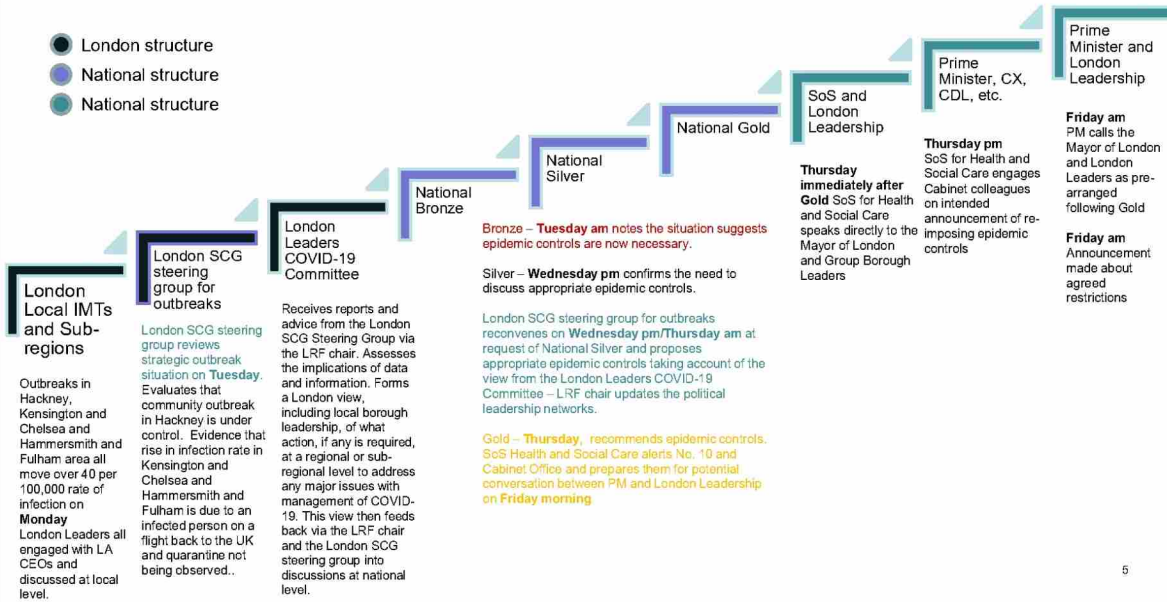
[OFFICIAL SENSITIVE]

# LONDON STRATEGIC ESCALATION PROCESS FOR OUTBREAK MANAGEMENT

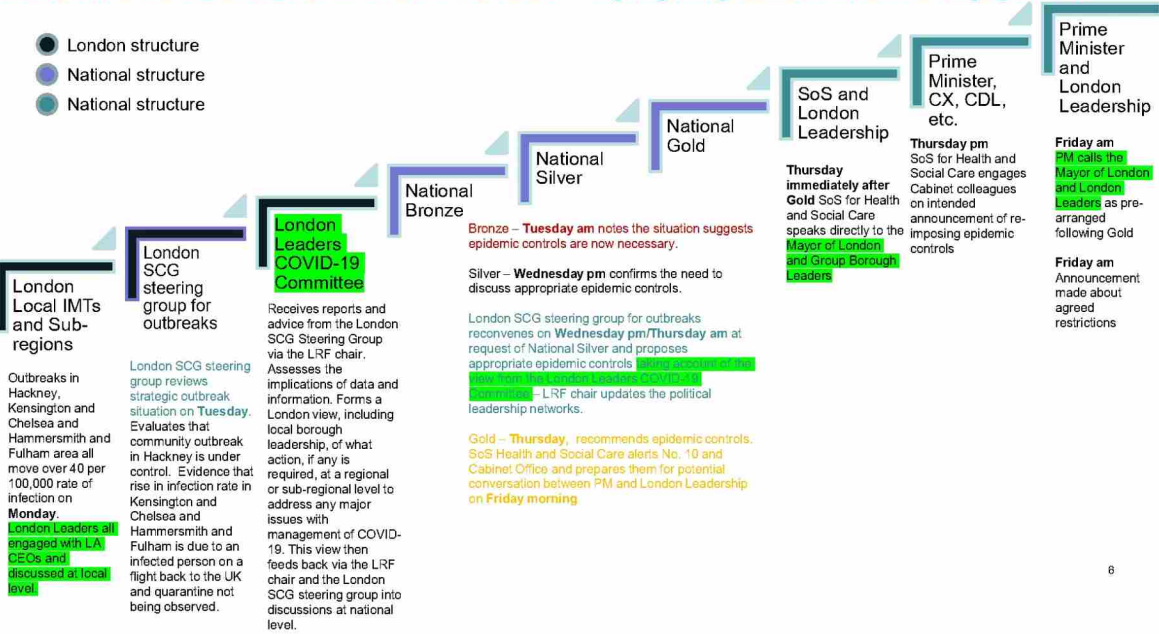


# LONDON STRATEGIC ESCALATION PROCESS – WORKED EXAMPLE

- London structure
- National structure
- National structure

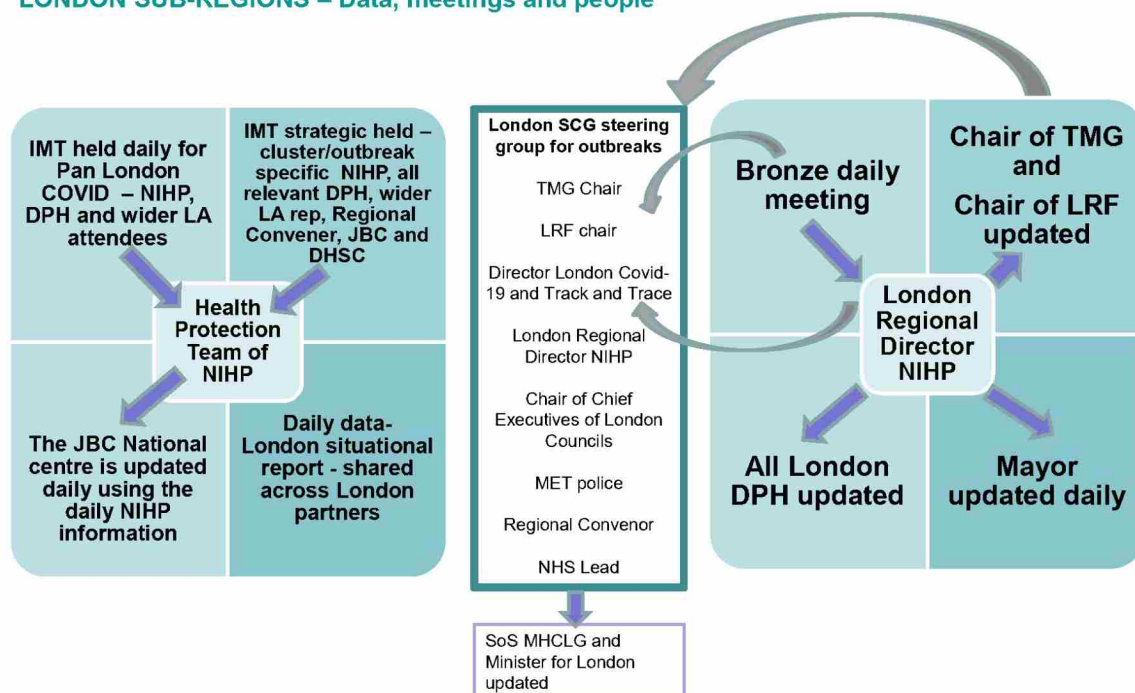


LONDON STRATEGIC ESCALATION PROCESS – highlighting London Leaders engagement



OFFICIAL SENSITIVE – UNAPPROVED DRAFT

## LONDON SUB-REGIONS – Data, meetings and people



OFFICIAL SENSITIVE – UNAPPROVED DRAFT

7

# **EPIDEMIC OVERVIEW AND RESPONSE**

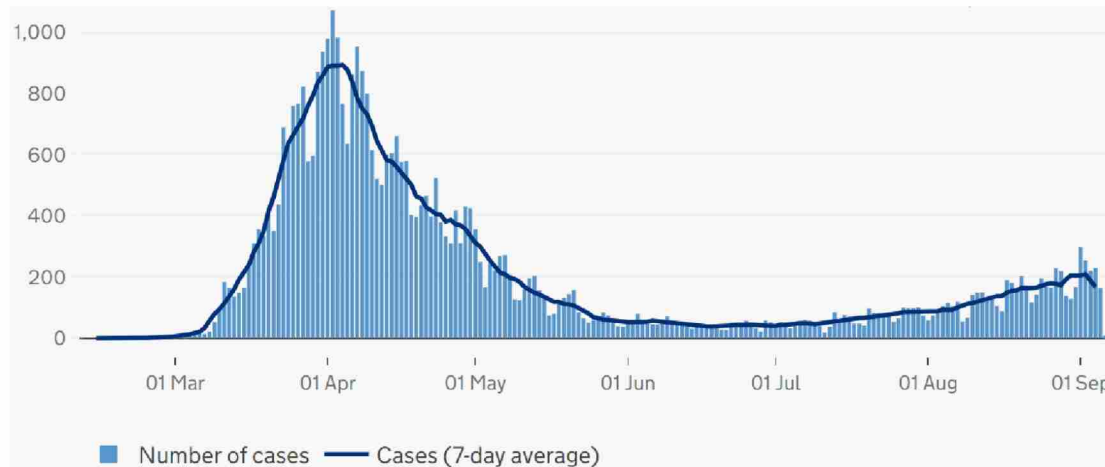


## DAILY NUMBER OF LAB-CONFIRMED LONDON CASES

New cases are charted by the date that the specimen is taken. There is a lag between when the specimen is taken and when it is reported. As a result the last 4 data points are particularly unreliable.

*Please note that this includes cases identified by testing in pillar 1 and pillar 2.*

Distribution of daily number of lab confirmed cases in London, with rolling averages (as at 7 September, 3:55pm)



9 Source: Public Health England

London overview 8 September 2020

# SUMMARY

## Summary of surveillance indicators for London

| Domain                      | Indicator                         | Value*         | Change   | Data source   | Date assessed      |
|-----------------------------|-----------------------------------|----------------|----------|---------------|--------------------|
| <b>Estimated R</b>          |                                   | <b>0.9-1.1</b> | ↔        | MRC/PHE       | 04 September       |
| <b>1 Cases</b>              | 7 day case rate (per 100,000)     | 18.8           | ↑        | PHE           | 29 Aug - 04 Sept   |
|                             | Cases in last 7 days              | 1,673          | ↑        | PHE           | 29 Aug - 04 Sept   |
|                             | New outbreaks and clusters        | 161            | ↑ (+)81  | PHE           | 02 - 08 September  |
|                             | Total deaths                      | 4              | ↔        | ONS           | w/e 28 August      |
|                             | LAs with 7 day rate 20.1-25       | 8/33           | ↑        | PHE           | 29 Aug - 04 Sept   |
|                             | LAs with 7 day rate 25.1-50       | 5/33           | ↑        | PHE           | 29 Aug - 04 Sept   |
|                             | LAs with 7 day rate >50           | 0/33           | ↔        | PHE           | 29 Aug - 04 Sept   |
|                             | Care homes (new outbreaks)        | 24             | ↓ (-)8   | PHE           | 02 - 08 September  |
| <b>2 Testing</b>            | BAME Groups                       | 23.9%          | ↓        | PHE           | 21 - 27 August     |
|                             | Individuals tested P1 & P2**      | 63,772         | ↓        | PHE           | 28 Aug - 03 Sept   |
|                             | Positivity                        | 2.5%           | ↑        | PHE           | 29 Aug - 04 Sept   |
|                             | Individuals tested pillar 1**     | 19,888         | ↔        | PHE           | 28 Aug - 03 Sept   |
|                             | Individuals tested pillar 2**     | 43,884         | ↓        | PHE           | 28 Aug - 03 Sept   |
|                             | Capacity used pillar 1 (NHS only) | 71%            | ↑        | NHS           | 03 - 09 September  |
|                             | Capacity used pillar 2            | 100%           | ↑        | Nat Test Prog | 08 September       |
|                             | Cases completed                   | 78%            | ↔        | PHE           | up to 09 September |
| <b>3 Contact tracing</b>    | Open cases                        | 2,272          | ↑        | PHE           | up to 09 September |
|                             | Contacts completed                | 72%            | ↓        | PHE           | up to 09 September |
| <b>4 NHS indicators</b>     | 111 calls***                      | 5,069          | ↑ (+)81% | NHS           | w/e 09 September   |
|                             | Hospital diagnoses                |                | ↑        | NHS           | up to 09 September |
|                             | Primary care contacts             |                | ↑        | NHS           | up to 07 September |
| <b>5 Broader indicators</b> | Schools attendance                |                | ↑        | DfE           | up to 09 September |
|                             | Mobility (transport, pedestrian)  |                | ↑        | GLA           | up to 07 September |
|                             | Footfall                          |                | ↑        | Google/NHS    | up to 03 September |

New cases are beginning to increase in a number of boroughs.

Estimated R is between 0.9-1.1. Trends in NHS indicators are also beginning to show an increase.

Pillar 2 testing has decreased, and overall positivity remains relatively low.

London still has one of the lower rates in the country, despite some increases in daily rates, with no increase in admissions and death rates (albeit with data lag).

Therefore, we will keep the situation under close scrutiny.

\*Most recent four days excluded from case and test figures due to reporting delays

\*\*Recent change in source to measure individuals tested and on a London residence basis

\*\*\* Increase in NHS 111 activity is under investigation

London overview 8 September 2020

10

## OVERVIEW OF LONDON COVID-19 EPIDEMIC

| Area  | Overview - cumulative  |                  |                     |                  | Alert measures  |  |                  |        | testing - 7-day average up to 04/09/2020                  |                                |  |  | Notes: Cases data crude rates for cases use the 2019 population estimates produced by ONS for weekly rates and 2019 pops for cumulative rates. Cumulative data includes all days available. Data for local authorities cases are taken from gov.uk covid dashboard count of cases and includes pillar 1 and pillar 2 laboratory confirmed cases. Cases recovered from laboratories by 12.30am are included in the counts published that day and are based on specimen data. Cumulative case counts include patients who are currently unwell, those who have recovered and those who have died. Cases in people who have not been tested are not included in the confirmed case counts. Lab-confirmed positive cases are attributed to the day the first specimen was taken from the person being tested (this specimen data). Each day new cases are reported, but the dates they originate from cover the previous few days. Data from around 5 days ago can be considered complete. Data for recent days are constantly being revised as more information becomes available. Due to this for comparison between Local Authorities the most recent 4 days are excluded from the calculation of rates. Mortality data are taken from the ONS weekly deaths by local authority report for deaths registered up to 28 August 2020. The figure for England is aggregated from where local area of residence is assigned and may be lower than the published national figure. Data are for deaths where covid-19 was mentioned on the death certificate whether the person was a confirmed case or not. Testing data are derived from SCSS, HPIZone, the de-identified PHE COVID-19 daily list shared with Field Services, and the United Dataset (for negative tests) and are compared with previous week. Data updated as of 9.03am on September 9, 2020. |
|---|------------------------|------------------|---------------------|------------------|---|--|------------------|--------|---|--------------------------------|--|--|--|
|   | cases up to 08/09/2020 |                  | deaths              |                  | recent activity   |  | alert measure    |        | Individuals tested per 100,000                            |                                | Percentage individuals test positive   |  |  |
|   | count of total cases   | rate per 100,000 | count of reg deaths | rate per 100,000 | number of cases in last 7 days up to 04/09/2020   | rate of cases in 7 days up to 04/09/2020 per 100,000 | up to 04/09/2020 | TREND* | provisional number of new cases -05/09/2020 to 08/09/2020 | Individuals tested per 100,000 | Percentage individuals test positive   |  |  |
| Barking and Dagenham  | 937                    | 440.1            | 166                 | 78.0             | 53  | 25.0   | ▲                | 17     | 97.6  | 3.7                            | Notes: Cases data crude rates for cases use the 2019 population estimates produced by ONS for weekly rates and 2019 pops for cumulative rates. Cumulative data includes all days available. Data for local authorities cases are taken from gov.uk covid dashboard count of cases and includes pillar 1 and pillar 2 laboratory confirmed cases. Cases recovered from laboratories by 12.30am are included in the counts published that day and are based on specimen data. Cumulative case counts include patients who are currently unwell, those who have recovered and those who have died. Cases in people who have not been tested are not included in the confirmed case counts. Lab-confirmed positive cases are attributed to the day the first specimen was taken from the person being tested (this specimen data). Each day new cases are reported, but the dates they originate from cover the previous few days. Data from around 5 days ago can be considered complete. Data for recent days are constantly being revised as more information becomes available. Due to this for comparison between Local Authorities the most recent 4 days are excluded from the calculation of rates. Mortality data are taken from the ONS weekly deaths by local authority report for deaths registered up to 28 August 2020. The figure for England is aggregated from where local area of residence is assigned and may be lower than the published national figure. Data are for deaths where covid-19 was mentioned on the death certificate whether the person was a confirmed case or not. Testing data are derived from SCSS, HPIZone, the de-identified PHE COVID-19 daily list shared with Field Services, and the United Dataset (for negative tests) and are compared with previous week. Data updated as of 9.03am on September 9, 2020. |  |  |
| Barnet  | 1,995                  | 504.0            | 459                 | 115.9            | 88  | 22.4   | ▲                | 23     | 123.1   | 2.6                            |  |  |  |
| Bexley  | 1,208                  | 486.5            | 241                 | 97.1             | 31  | 12.5   | ▲                | 9      | 92.2  | 1.9                            |  |  |  |
| Brent   | 2,006                  | 608.3            | 490                 | 148.6            | 59  | 17.8   | ▲                | 17     | 93.0  | 2.7                            |  |  |  |
| Bromley   | 1,707                  | 513.6            | 346                 | 104.1            | 48  | 14.5   | ▲                | 14     | 109.3   | 1.9                            |  |  |  |
| Camden  | 874                    | 323.7            | 161                 | 59.6             | 37  | 14.1   | ▲                | 6      | 109.2   | 1.8                            |  |  |  |
| Croydon   | 2,070                  | 535.3            | 493                 | 127.5            | 67  | 17.4   | ▲                | 11     | 94.5  | 2.6                            |  |  |  |
| Ealing  | 1,902                  | 556.5            | 413                 | 120.8            | 62  | 18.1   | ▲                | 28     | 100.1   | 2.6                            |  |  |  |
| Enfield   | 1,439                  | 431.1            | 391                 | 117.1            | 50  | 15.0   | ▲                | 34     | 95.5  | 2.2                            |  |  |  |
| Greenwich   | 1,110                  | 385.5            | 228                 | 79.2             | 38  | 13.3   | ▲                | 7      | 96.2  | 2.0                            |  |  |  |
| Hackney and City of London                                      | 1,247                  | 428.8            | 235                 | 80.8             | 49  | 17.0   | ▼                | 16     | 105.5**   | 2.3**                          |  |  |  |
| Hammersmith and Fulham  | 976                    | 527.2            | 170                 | 91.8             | 51  | 27.5   | ▲                | 12     | 123.7   | 3.2                            |  |  |  |
| Haringey  | 990                    | 368.5            | 275                 | 102.4            | 48  | 17.7   | ▲                | 24     | 97.4  | 2.6                            |  |  |  |
| Harrow  | 1,529                  | 608.8            | 402                 | 160.1            | 63  | 25.2   | ▲                | 22     | 106.1   | 3.4                            |  |  |  |
| Havering  | 1,200                  | 462.3            | 276                 | 106.3            | 62  | 24.0   | ▲                | 31     | 103.5   | 3.3                            |  |  |  |
| Hillingdon  | 1,375                  | 448.1            | 314                 | 102.3            | 53  | 17.4   | ▲                | 23     | 99.9  | 2.5                            |  |  |  |
| Hounslow  | 1,385                  | 510.1            | 238                 | 87.7             | 73  | 27.0   | ▲                | 35     | 118.1   | 3.3                            |  |  |  |
| Islington   | 717                    | 295.7            | 153                 | 63.1             | 42  | 17.6   | ▲                | 15     | 109.4   | 2.3                            |  |  |  |
| Kensington and Chelsea  | 746                    | 477.8            | 126                 | 80.7             | 46  | 29.4   | ▲                | 13     | 130.9   | 3.3                            |  |  |  |
| Kingston upon Thames  | 859                    | 483.9            | 131                 | 73.8             | 28  | 16.0   | ▲                | 8      | 111.4   | 2.0                            |  |  |  |
| Lambeth   | 1,667                  | 511.3            | 291                 | 89.3             | 63  | 19.3   | ▲                | 26     | 110.2   | 2.5                            |  |  |  |
| Lewisham  | 1,398                  | 457.1            | 293                 | 95.8             | 43  | 14.2   | ▲                | 9      | 95.0  | 2.1                            |  |  |  |
| Merton  | 1,059                  | 512.7            | 205                 | 99.3             | 24  | 11.6   | ▲                | 7      | 106.4   | 1.6                            |  |  |  |
| Newham  | 1,605                  | 454.5            | 310                 | 87.8             | 83  | 23.6   | ▲                | 36     | 89.2  | 3.8                            |  |  |  |
| Redbridge   | 1,401                  | 459.0            | 313                 | 102.5            | 82  | 27.0   | ▲                | 26     | 107.8   | 3.6                            |  |  |  |
| Richmond upon Thames  | 691                    | 349.0            | 153                 | 77.3             | 30  | 15.2   | ▼                | 11     | 133.9   | 1.6                            |  |  |  |
| Southwark   | 1,111                  | 536.6            | 255                 | 80.0             | 50  | 15.8   | ▲                | 23     | 106.2   | 2.1                            |  |  |  |
| Sutton  | 1,112                  | 538.9            | 179                 | 86.7             | 24  | 11.7   | ▲                | 3      | 106.7   | 1.6                            |  |  |  |
| Tower Hamlets   | 1,105                  | 340.3            | 186                 | 57.3             | 73  | 23.0   | ▲                | 27     | 99.9  | 3.3                            |  |  |  |
| Waltham Forest  | 1,229                  | 443.7            | 252                 | 91.0             | 35  | 12.6   | ▼                | 14     | 102.5   | 1.8                            |  |  |  |
| Wandsworth  | 1,498                  | 454.4            | 213                 | 64.6             | 66  | 20.2   | ▲                | 21     | 125.8   | 2.3                            |  |  |  |
| Westminster   | 1,017                  | 389.2            | 187                 | 71.6             | 52  | 20.4   | ▲                | 5      | 100.0   | 2.9                            |  |  |  |
| London  | 41,765                 | 466.0            | 8,545               | 95.3             | 1,673   | 18.8   | ▲                | 573    |   |                                |  |  |  |
| England   | 306,555                | 544.6            | 49,118              | 87.3             | ###   | 21.9   | ▲                | 4,237  |   |                                |  |  |  |
| Rate statistically significantly LOWER than the London average  |                        |                  |                     |                  | * Trend - rate for current week compared to the 7-day week previously ending 28/08/2020 |  |                  |        |   |                                |  |  |  |
| Rate statistically significantly HIGHER than the London average |                        |                  |                     |                  | ** value for Hackney only   |  |                  |        |   |                                |  |  |  |

# COVID-19 CASES PER 100,000 ACROSS LONDON



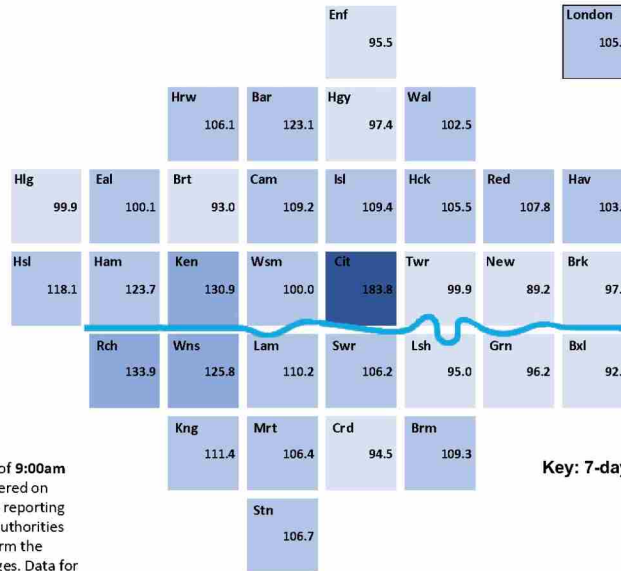
Source: London SAR - Data updated as of 9:00am on September 9 2020. Document rendered on September 9 2020 at 15:36. Due to the reporting delays for comparison between Local Authorities the most recent 4 days are excluded from the calculations of rates and moving averages. Data for specimens taken/outbreaks reported is between August 29 2020 and September 4 2020 (7 day).

Key: 7-day rate per 100,000 and Epidemic Level

| 7-day rate per 100,000 | Epidemic Level |
|------------------------|----------------|
| 0.0 - 10.0             | 1A             |
| 10.1 - 20.0            | 1A             |
| 20.1 - 25.0            | 1B             |
| 25.1 - 50.0            | 2              |
| >50.0                  | 3              |

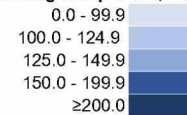
## INDIVIDUALS TESTED PER 100,000 POPULATION

7 day moving average



Source: London SAR - Data updated as of 9:00am on September 9 2020. Document rendered on September 9 2020 at 15:36. Due to the reporting delays for comparison between Local Authorities the most recent 4 days are excluded from the calculations of rates and moving averages. Data for specimens taken/outbreaks reported is between August 29 2020 and September 4 2020 (7 day).

Key: 7-day testing rate per 100,000

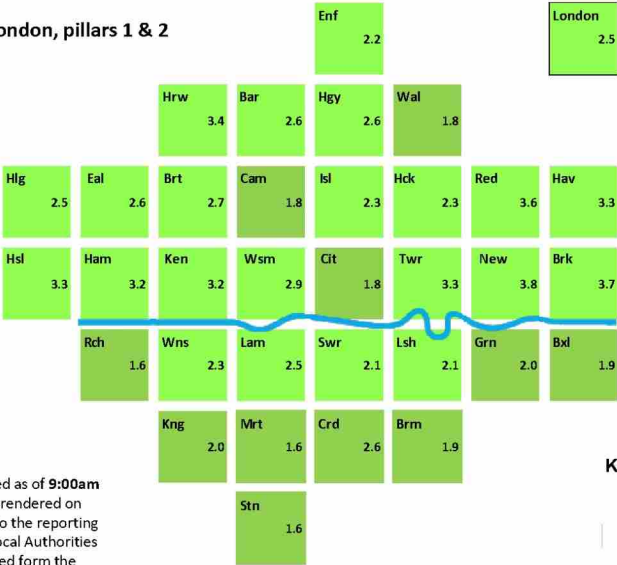


London overview 8 September 2020

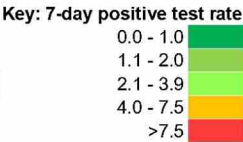
13

PERCENTAGE OF INDIVIDUALS TESTING POSITIVE

Weekly percentage, London, pillars 1 & 2



Source: London SAR - Data updated as of 9:00am on September 9 2020. Document rendered on September 9 2020 at 15:36. Due to the reporting delays for comparison between Local Authorities the most recent 4 days are excluded from the calculations of rates and moving averages. Data for specimens taken/outbreaks reported is between August 29 2020 and September 4 2020 (7 day).



London overview 8 September 2020

## LONDON EPIDEMIC RESPONSE ESCALATION FRAMEWORK

| Epidemic Level  | Borough 7-day cases per 100,000 | Epidemic Phase                 | Key epidemic measures to be considered  | Wider Local Authority actions   | Wider Political leadership actions  |
|---|---------------------------------|--------------------------------|---|---|---|
| <b>1A</b>   | 0 - 20                          | Areas requiring watching brief | Testing and Contact tracing<br>Community outreach and support<br>Mass media campaigns<br>Reinforce prevention messaging<br>Support local readiness including best-practice sharing<br>Input into assurance of local readiness | Lead incident response and plan/implementation of actions<br>Increase testing capacity<br>Monitor and maintain test positivity <5%<br>Trace complex cases, identify contacts, within scope of Tier 1b<br>Lead delivery of local public comms & engagement plan<br>Identify and plan for most vulnerable | Build local outbreak readiness incl. outbreak control plans<br>Build local capacity and capability<br>Ensure the necessary local preventative actions are enacted<br>Proactively monitor local data/analytics feeds<br>Ensure local schools, business, care homes COVID-secure<br>Develop ad test proposed escalation routes and criteria |
| Regional Trigger point:<br>London Regional rate >20 per 100,000 |                                 |                                | Actions: Point for cross-regional assessment on epidemic evolution and agreement of enhanced regional or national NPIs to be considered and/or requested  |   |   |
| <b>1B</b>   | 20 - 25                         | Areas of national concern      | All of the above plus:<br>Increase MTU access<br>Widen Testing and screening options<br>Targeted campaigns<br>Strengthen CT activity<br>Community Outreach  | Organise and scale up MTU and testing activity<br>Reduce test positivity <5%<br>Ensure at risk communities engaged<br>Monitor care homes, hospitals, workplaces for outbreaks   | Assure local readiness incl. capability/capacity<br>Work with PHE, NHSTT, JBC to implement range of available interventions a<br>Draw on stakeholders to access additional support & resource<br>Support co-ordination across boundaries including sub-regions  |
| <b>2</b>  | 25 - 50                         | Areas of enhanced support      | All of the above plus:<br>Reintroduce epidemic controls<br>Close settings driving epidemic<br>Mandatory masks<br>Restrict social contacts<br>Restrict religious gatherings  | Scale up testing rate to >500-1000 per 100,000<br>Manage public communications<br>Support most vulnerable communities<br>Consider use of local authority powers to reduce transmission risk<br>Work with sub-regional, regional and national partners   | Drive E2E system readiness and optimise performance<br>Provide integrated dashboards to support local monitoring<br>Proactively monitor data and flag issues with regional and national teams   |
| Regional Trigger point:<br>London Regional rate >40 per 100,000 |                                 |                                | Actions: Point for cross-regional assessment on epidemic evolution and agreement of enhanced regional or national NPIs to be considered and/or requested  |   |   |
| <b>3</b>  | >50                             | Areas of intervention          | All of the above plus:<br>Consider local lockdown<br>Target intervention dependent upon drivers   | Lead delivery of local public comms & engagement plan<br>Draw on stakeholders to access additional support & resource<br>Support co-ordination across boundaries beyond a UTLA  | Manage lifting/lowering of national restrictions as appropriate<br>Provide guidance on demand to support local capacity build<br>Parliamentary accountability for the health of the nation  |

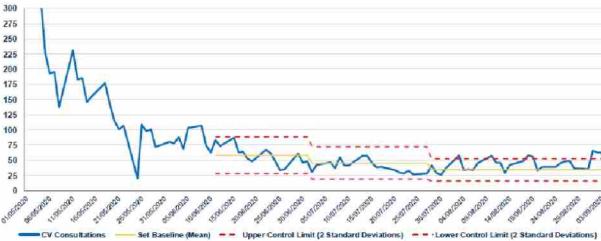
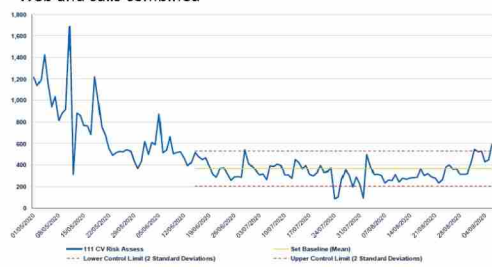


## NHS LEADING INDICATORS: LONDON PICTURE 1

COVID risk assess call back 111 activity (to 5 September)

Suspected COVID GP consultations NEL (to 4 September)

Web and calls combined



Based on calls and web activity with a risk assessed call back outcome

A spike in this metric occurred approximately 3 weeks ahead of the critical care peak

Previous fluctuations at weekends were due to data quality issues

There has been an upward trend in 111 risk assessment volumes over the last few weeks.

Source: NHS

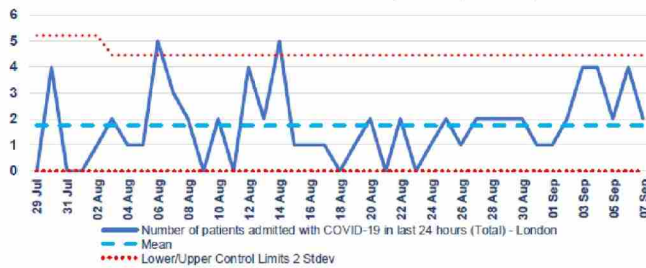
Discovery platform data available only for GPs in NEL and NWL

NEL has dipped having risen last week.



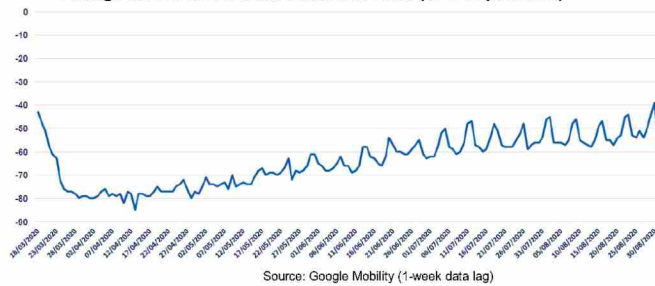
## NHS LEADING INDICATORS: LONDON PICTURE 2

Patients admitted with COVID-19 – London (to 7 September)



Patients admitted with COVID are consistently fewer than 5-10 patients daily.

Change in London transit station footfall (to 1 September)



Footfall captured by Google Mobility expressed as a reduction from a pre-COVID baseline

Mobility at transit stations steadily increasing since mid April, with footfall higher at the weekends, but stabilised during August

Footfall has started to rise again over the last few weeks.

Source: NHS

# **CURRENT, FURTHER ACTION AND SUPPORT NEEDED IN LONDON**

## **DISCUSSION**

## LONDON PILLAR 1 TESTING ACTIVITY

|          | 20-26 August | 27 August - 2 September | 3-9 September |
|----------|--------------|-------------------------|---------------|
| Activity | 75,536       | 72,987                  | 86,848        |

- Source: NHS testing dashboard (note: activity volumes reported do not include activity from Roche labs/platforms and Colindale)
- 7 day positivity rate from London 27 August to 2 September = 2.2% (Pillars 1 and 2)
- Void and inconclusive tests are usually repeated so should be negligible
- Pillar 1 London turnaround time 6<sup>th</sup> September was 91.9% in 24 hours or less.

## LONDON PILLAR 1 TESTING ACTIVITY

|   | 20-26 August  | 27 August- 2 September | 2-8 September |
|---|---------------|------------------------|---------------|
| Tests conducted at drive-through regional sites | 24,402        | 20,267                 | 11,481        |
| Tests conducted at walk-through local sites     | 3,857         | 5,620                  | 9,130         |
| Tests conducted at MTUs                         | 17,107        | 13,194                 | 12,074        |
| Home test kits sent                             | 40,792        | 37,303                 | 36,773        |
| <b>TOTAL</b>                                    | <b>86,158</b> | <b>76,384</b>          | <b>69,458</b> |

- Positivity: 2.7% for 7 days to 5 September (up from 1.4% previous 7 days)
- Void and inconclusive last 7 days to 5 September: 1.8% in London; 3.1% England

NHS Daily CV19 Dashboard excel spreadsheet – emailed from [england.covid-sitrep@nhs.net](mailto:england.covid-sitrep@nhs.net)  
 Positivity rates by region – daily FS reports (sharepoint)  
 Turn around time -

## **CONTACT TRACING IN LONDON: KEY MESSAGES**

- Overall Test and Trace performance in London remains steady
  - case completion rate c80%
  - contact completion rate c60%
- Marked borough variation in case and contact completion rates
- Median time for case reported to contact completed has increased
- Locally supported contact tracing is mobilising in London boroughs:
  - Hackney, Newham, Southwark, Hammersmith and Fulham in first round
  - Kensington and Chelsea also likely to start due to increase in local rates
  - Working with all London boroughs that have expressed an interest to develop implementation plans over the coming months
  - Learning will be shared across boroughs and regular updates to this group on the impact of the local work

## ASKS FROM LONDON

1. Agree the London COVID-19 **strategic escalation process**
2. Further support to increase **testing capacity** in London
3. Accelerate the on-boarding of additional London local authorities to the **locally enhanced contact tracing** programme
4. Maintain and support **strong, clear and consistent public facing messaging** to Londoners and nationally
5. Build upon lessons learnt from the resurgence of COVID-19 in other regions, clarifying the **tool-kit of available NPIs**, when best implemented and with what effect.

# **LONDON SUMMIT ON COVID-19**

**SUMMARY SLIDES ON ESCALATION, EPIDEMIOLOGY AND RESPONSE**