



Public Health  
England

# EXERCISE NIMBUS

## BRIEFING

**OFFICIAL SENSITIVE**

This briefing is designed to provide an overview of the exercise and its conduct.

Exercise Nimbus - COBR briefing



Public Health  
England

# Exercise Nimbus – agenda

1. Scene setting
2. Simulated COBR
  1. Current situation update and outlook
  2. Caring for the sick
    - a. In hospitals
    - b. In the community
  3. Staff absences and impacts on essential services
  4. Communications
3. Capture of key lessons/issues



Public Health  
England

## Exercise Objectives

1. To expose the potential scale and range of impacts arising during the reasonable worst case scenario for a pandemic.
2. To work through some of the most difficult decisions that would need to be made by Ministers at key points during a pandemic.
3. To rehearse strategic decision making.

Exercise Nimbus - COBR briefing

The exercise will focus on healthcare decisions and impacts and will concentrate on management of the sick

Pan flu is a good model for the response and to understand the disease



## Exercise Nimbus – key points

- This is a fictional scenario and is deliberately based on the reasonable worst case, it is not a prediction.
- The exercise is focussed on some but not all of the most challenging decisions that would be needed.
- A series of underpinning assumptions and decisions that have already been taken by this point are included in the CRIP.
- Please take those as your starting point rather than revisiting them – the important thing is to explore the issues.
- Can pause and re-start if helpful – facilitators will remain and will help with the wash up at the end.

Important points to note

Exercise Nimbus - COBR briefing

# **EXERCISE NIMBUS**

## **SCENE SETTING**

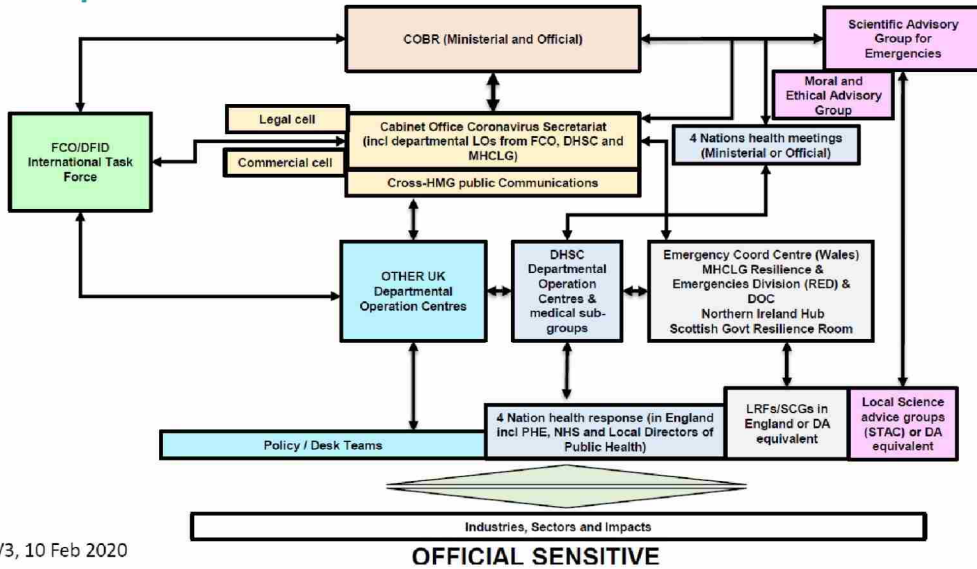
### **OFFICIAL SENSITIVE**

This briefing is designed to provide a broad overview of the exercise and subject matter.  
Welcome

Exercise Nimbus - COBR briefing



# Response overview



What is available for pandemic preparedness and response  
Command structures and plans

Exercise Nimbus - COBR briefing



Public Health  
England

## UK key scenario synopsis

- Today is 14 April 2020
- 1<sup>st</sup> UK case 31 Jan 2020; sustained transmission in the UK deemed to be from 1 Mar 2020
- COBR O & M have recommended moving from containment to managing the impacts of the extreme number of cases
- Current policy is for schools to remain open but at any one time many are closed as a result of local decisions by the school
- Up to 1,675,000 new clinical cases forecast in the coming week
- 8,500 deaths to date across the UK (as at 13 April 2020), however there is a lag in data. This equates to a Case Fatality Rate (CFR) of approximately 2.5% of clinical cases (1.25% of the total population)
- Overall, there may be around 840,000 excess deaths over the 16 week wave of infection, assuming the reasonable worst case scenario

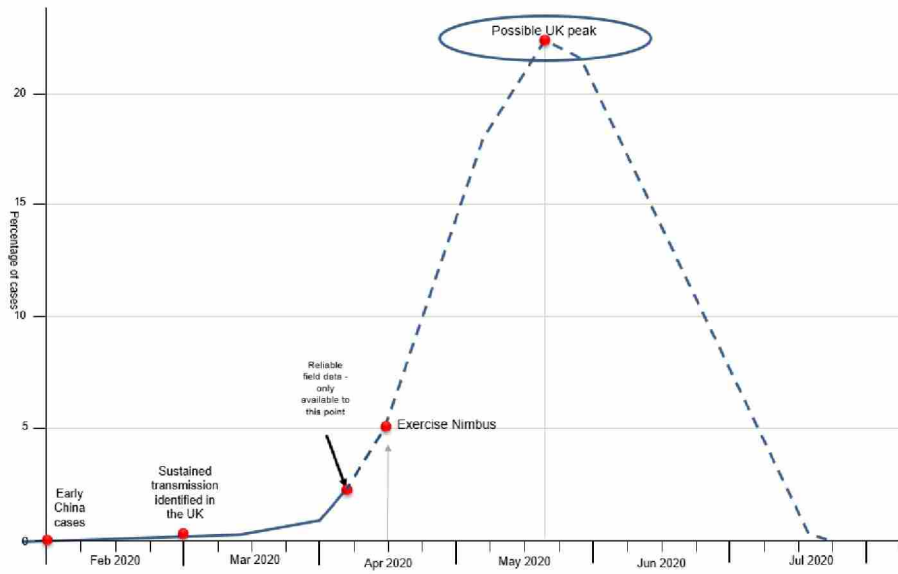
Important note: The scenario is fictional  
See the CRIP for detail on all aspects of the response to date  
Deaths included in the CRIP and will present a huge challenge to manage

Exercise Nimbus - COBR briefing



Public Health  
England

## Visual representation of the possible course of the wave of infection



8

OFFICIAL SENSITIVE

This is a rough estimate of what the wave may look like

Exercise Nimbus - COBR briefing



**EXERCISE NIMBUS**

**EXERCISE START**

**OFFICIAL SENSITIVE**

This briefing is designed to provide a broad overview of the exercise and subject matter.  
Welcome

Exercise Nimbus - COBR briefing