

Message

From: McLean, Angela SCS (CSA-Personal) [Angela.Mclean113@mod.gov.uk]
Sent: 19/05/2020 07:03:44
To: Ellen Brooks Pollock [I&S]; Graham Medley [Graham.Medley@I&S]; SPI-M [I&S]; Vallance, Patrick (GO-Science) [P.Vallance1@go-science.gov.uk]
Subject: RE: The ready reckoner - again

*** This message originated outside LSHTM ***

Ellen – this is fantastic.

Patrick, Graham, SPI-M are you happy with this to be shown to cabinet office this morning?

I think it's really useful, but should have a health warning of some kind. My experience so far with CO is that if you give them a number they cling onto it in ways that might make us feel queasy.

If, later this week, we want to give this to them to keep I suggest we ask SPI-M to look at it by correspondence and Sage to look at it too.

Thank you so much Ellen, I'm sorry to have made you work so late.

Angela

From: Ellen Brooks Pollock [I&S]
Sent: 18 May 2020 23:39
To: McLean, Angela SCS (CSA-Personal) <Angela.Mclean113@mod.gov.uk>; Graham Medley [I&S]; SPI-M [I&S]@gov.uk>
Subject: Re: The ready reckoner - again

Dear Angela,

Attached is a figure with 3 plots, each containing 4 ribbons. (also attached as 3 separate figures)

Does this look like the type of thing you were thinking of?

Best wishes

Ellen

Details:

1. Schools closed == 2% of children at school
2. To achieve 50% of 5-11 year olds at school, I included 5, 6, 7, 8 and 11 year olds because there are very few 5 and 6 year olds (<5) in the social contact survey data.
3. We calibrated "no contact tracing" 20% work and leisure to $R_t \sim 0.7$
4. I am attaching a high quality pdf, but some people seem to have printing issues with the transparency, so also attaching slightly lower quality png files

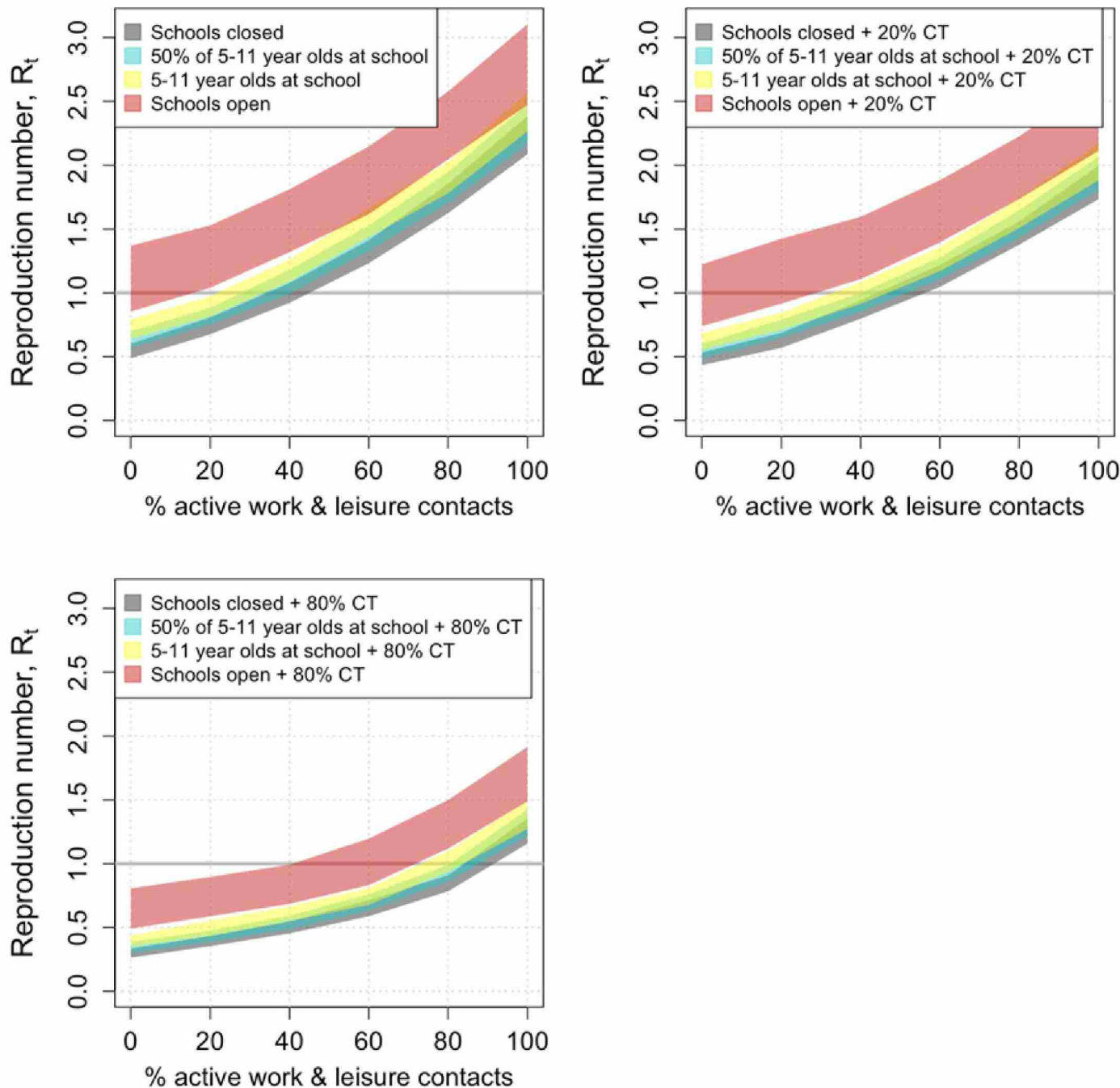
From: "McLean, Angela SCS (CSA-Personal)" <Angela.Mclean113@mod.gov.uk>
Date: Monday, 18 May 2020 at 17:46
To: Ellen Brooks Pollock [I&S], Graham Medley

Subject: The ready reckoner - again

Dear Ellen,

I have a conversation with CO tomorrow in which it would be really helpful for me to have yet another version of your ready reckoners.

Can you do a schools ribbon that is just reception, year 1 and year 6, or some sensibl



e approximation like 50% of children in primary school?

It would have three pictures:

Picture 1: No contact tracing, 4 ribbons for: schools closed, primaries half open, primaries open, primaries and secondaries open.

Picture 2: 20% of contacts traced in 48 hours, 4 ribbons for: schools closed, primaries half open, primaries open, primaries and secondaries open.

Picture 3: 80% of contacts traced in 48 hours, 4 ribbons for: schools closed, primaries half open, primaries open, primaries and secondaries open.

Looking at your R numbers for Ronni from this morning, your R estimate from case data is consistent with your “no contact tracing” 20% at work and leisure, schools closed band, are you happy to keep it there?

Now the rub, the conversation is before Sage tomorrow. Is this something that can be done by 9 tomorrow morning? If I could add just one thing in the available time it would be to see where the “schools closed” ribbon sits when there is 80% CT.

I am in London tomorrow so my plan was to take a print-out with me, but not hand it over. SPI-M, Graham what do you think? They will want it if I show it to them.

Angela

Professor Dame Angela McLean | Chief Scientific Adviser | UK Ministry of Defence

MOD Main Building 5.G.13 | Tel: **Irrelevant & Sensitive** [CSA Private Office \(email\)](#)