

UK

Key (Lines)



Communication during an emergency



Information sharing about the existence, likelihood and impact of risks



Oversight and coordination of the national risk assessment and national security risk assessment



Review of National Risk Assessment and National Security Risk Assessment methodology.



Information sharing about emerging, pandemic-related threats



Provision of scientific and technical advice or support



Designated Lead Government Department for pandemic preparedness and response



Information sharing about pandemic planning and preparedness

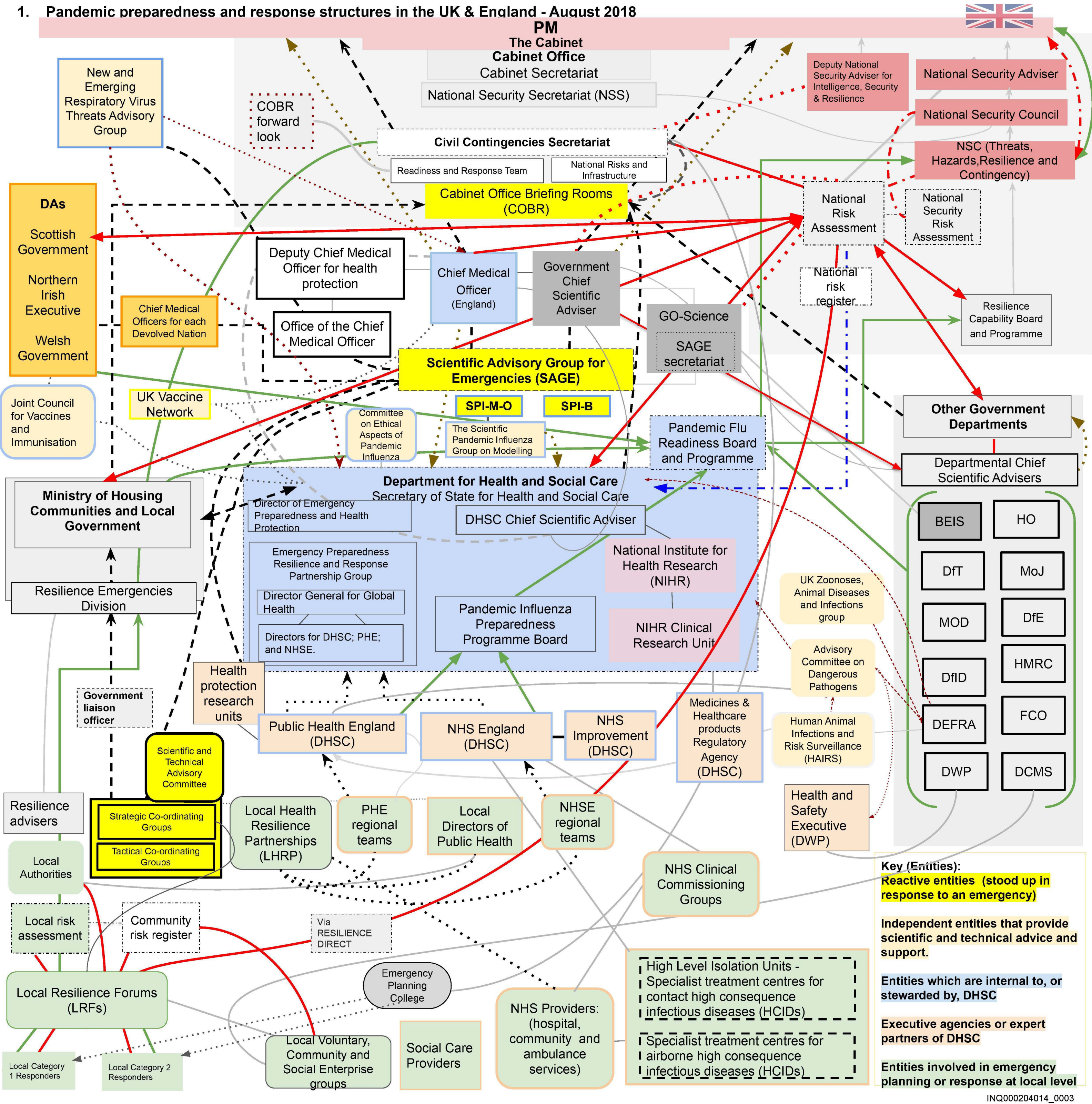


Communication lines within the Emergency, Preparedness, Resilience and Response framework led by Department of Health and Social Care

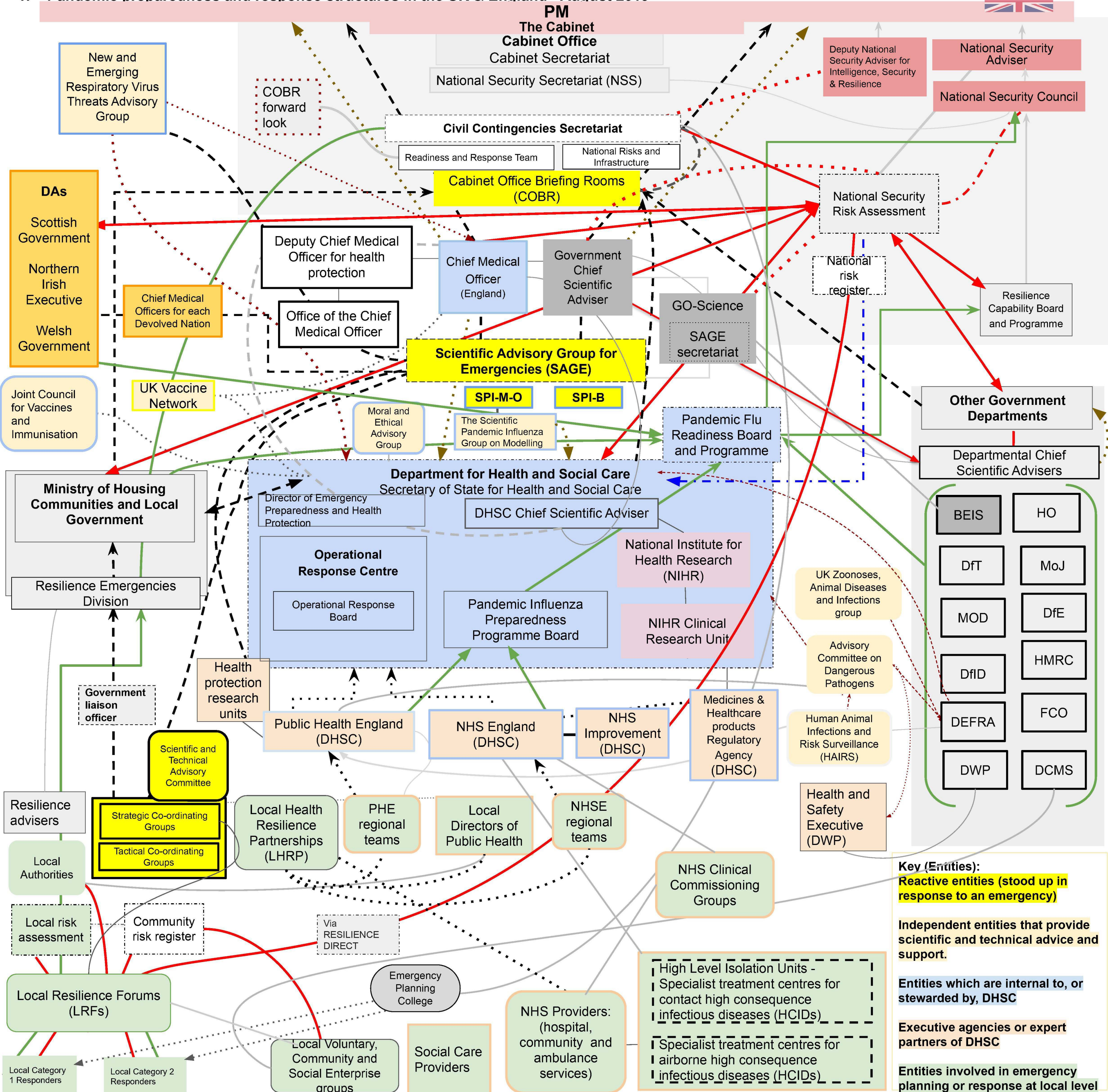


Other connection

1. Pandemic preparedness and response structures in the UK & England - August 2018



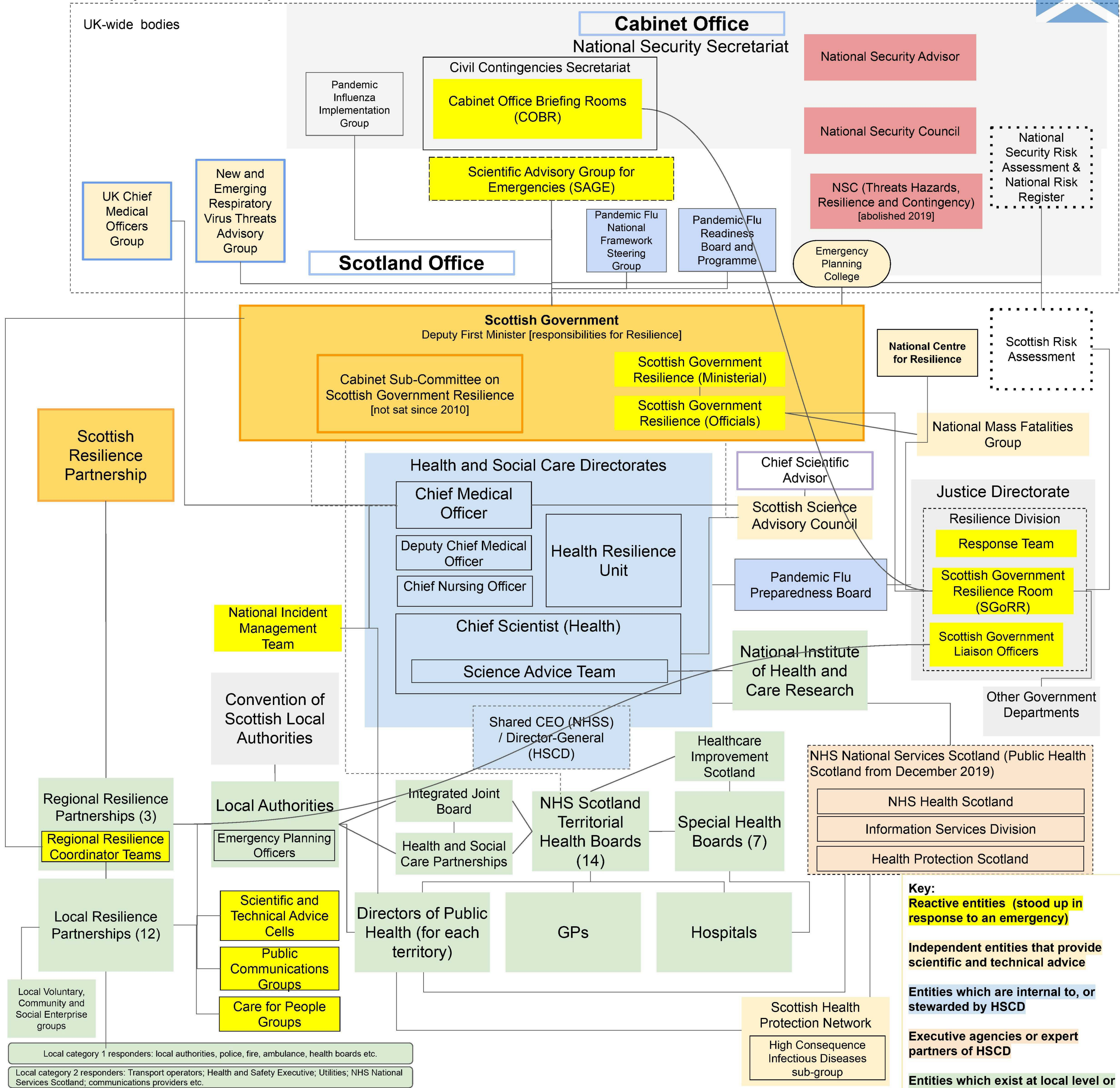
1. Pandemic preparedness and response structures in the UK & England - August 2019



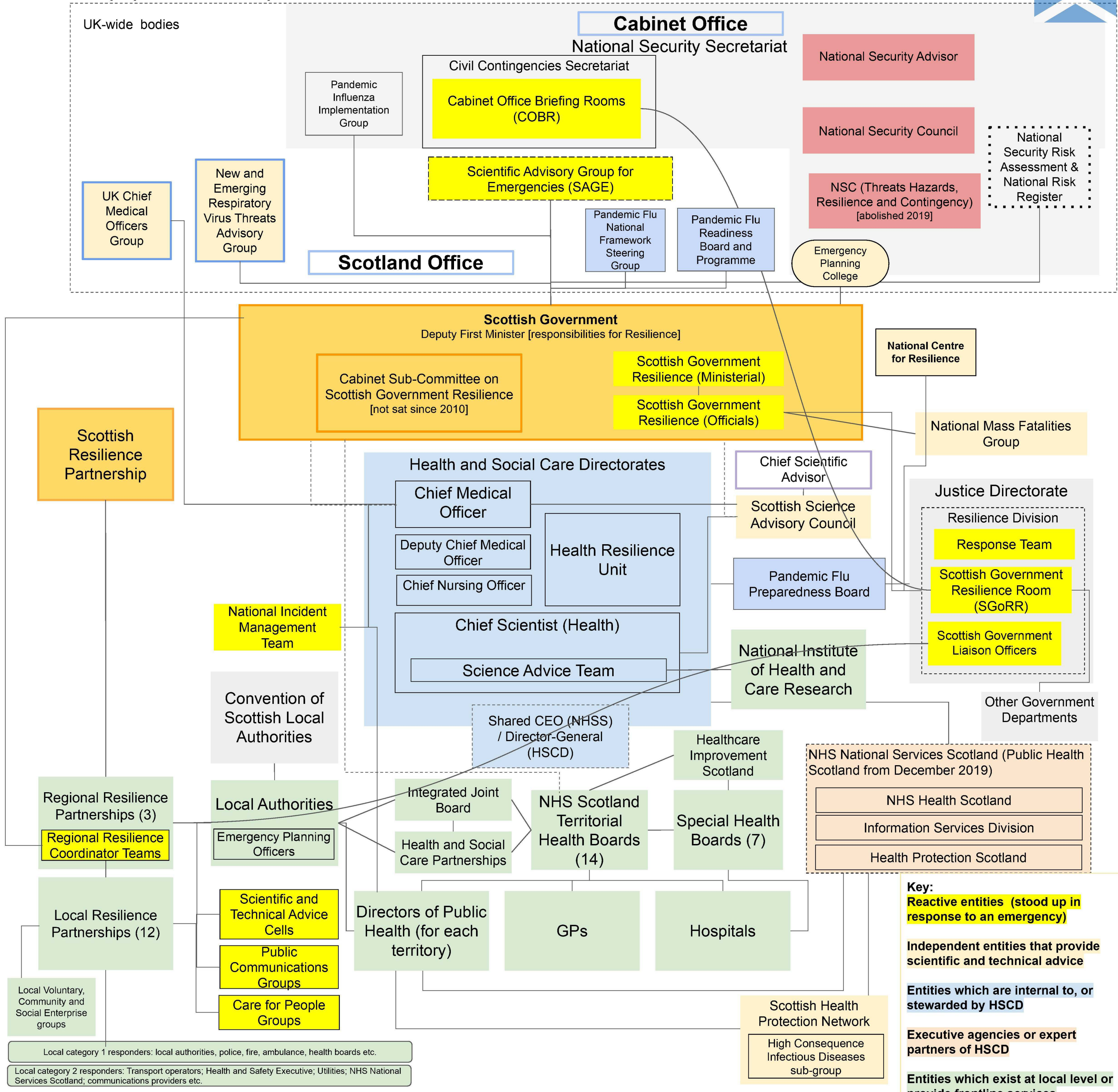
Key (Entities):
Reactive entities (stood up in response to an emergency)
Independent entities that provide scientific and technical advice and support.
Entities which are internal to, or stewarded by, DHSC
Executive agencies or expert partners of DHSC
Entities involved in emergency planning or response at local level

SCOTLAND

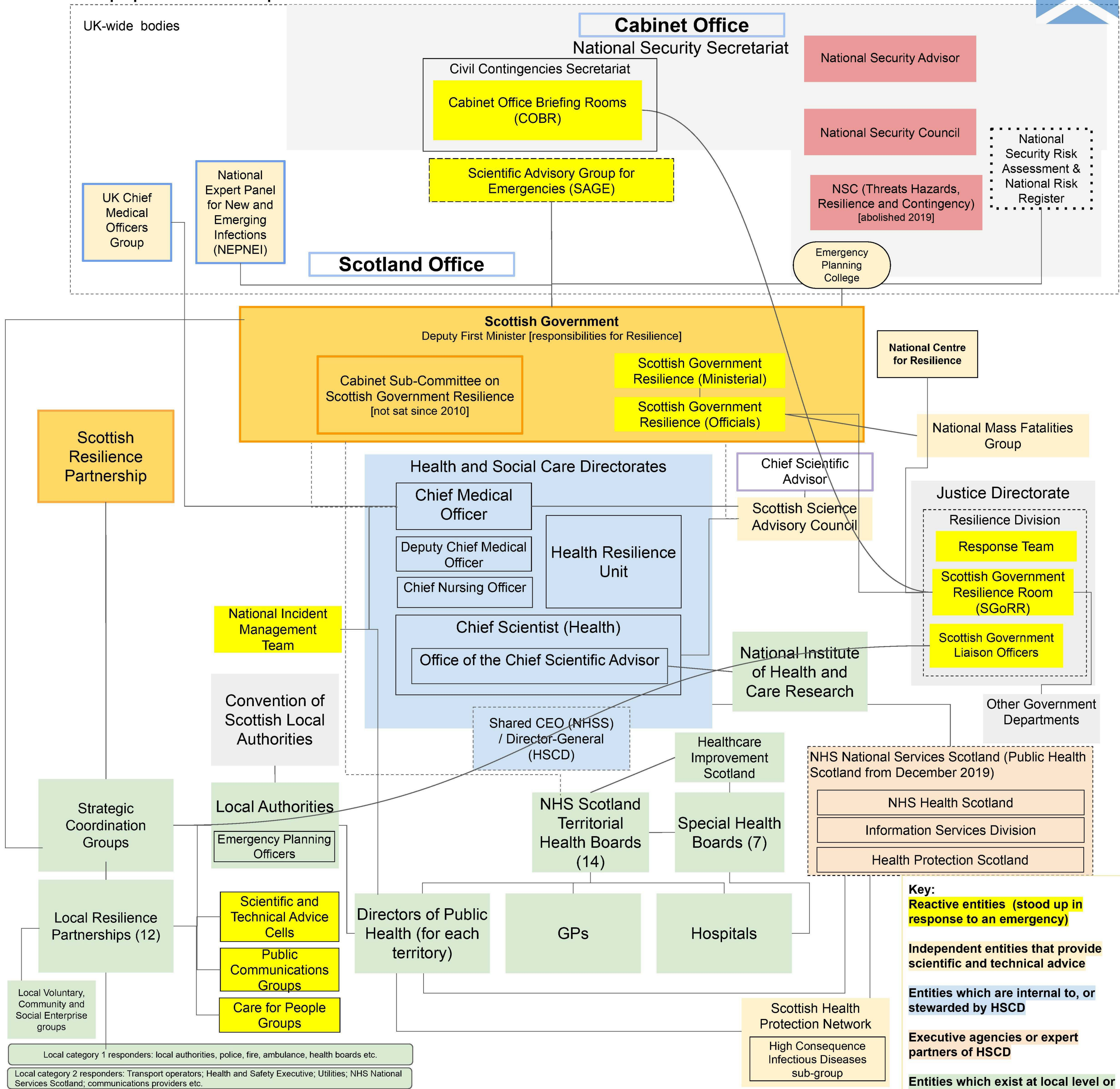
2. Pandemic preparedness and response structures Scotland c.2019



2. Pandemic preparedness and response structures Scotland c.2017

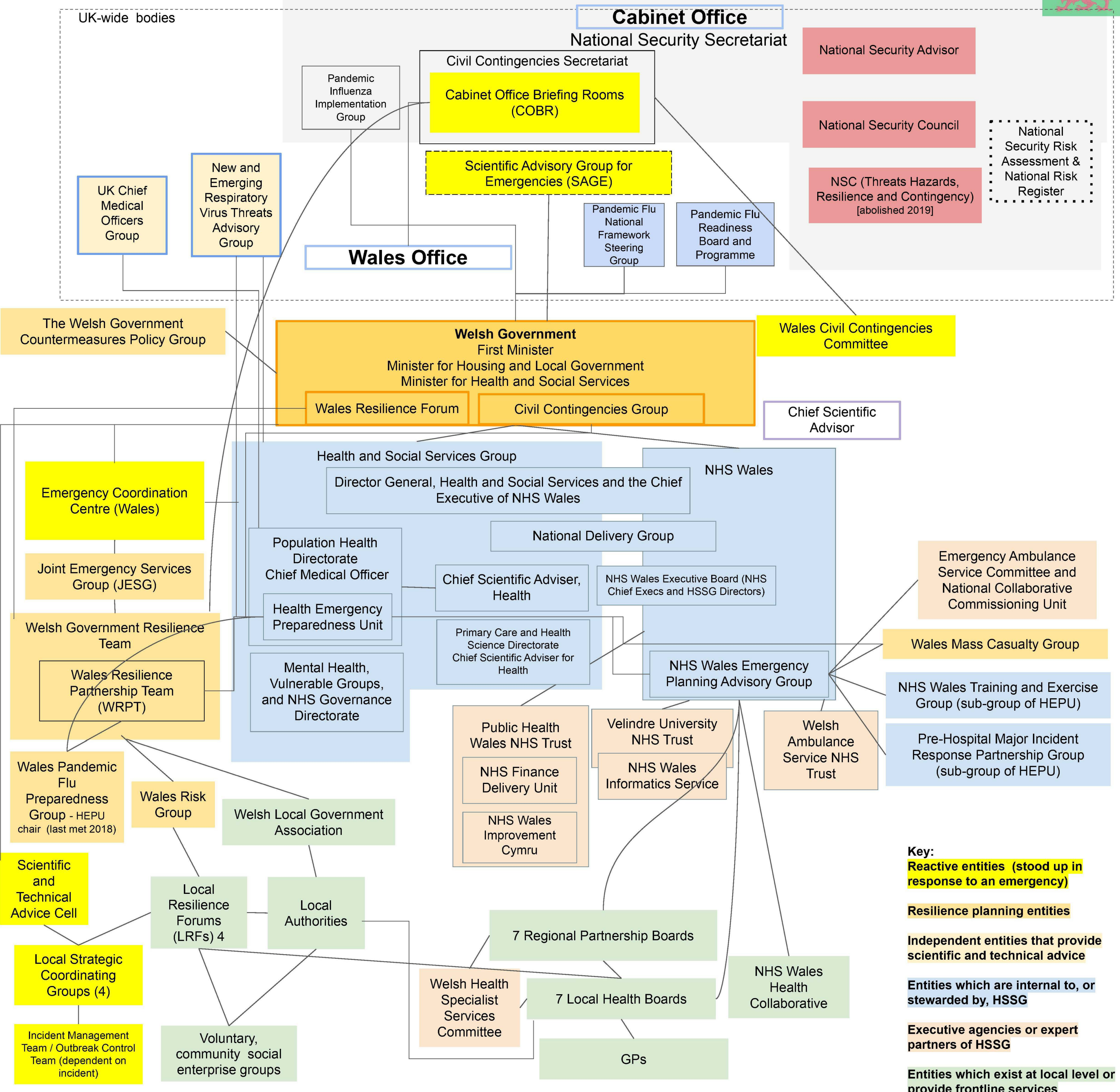


2. Pandemic preparedness and response structures Scotland c.2010

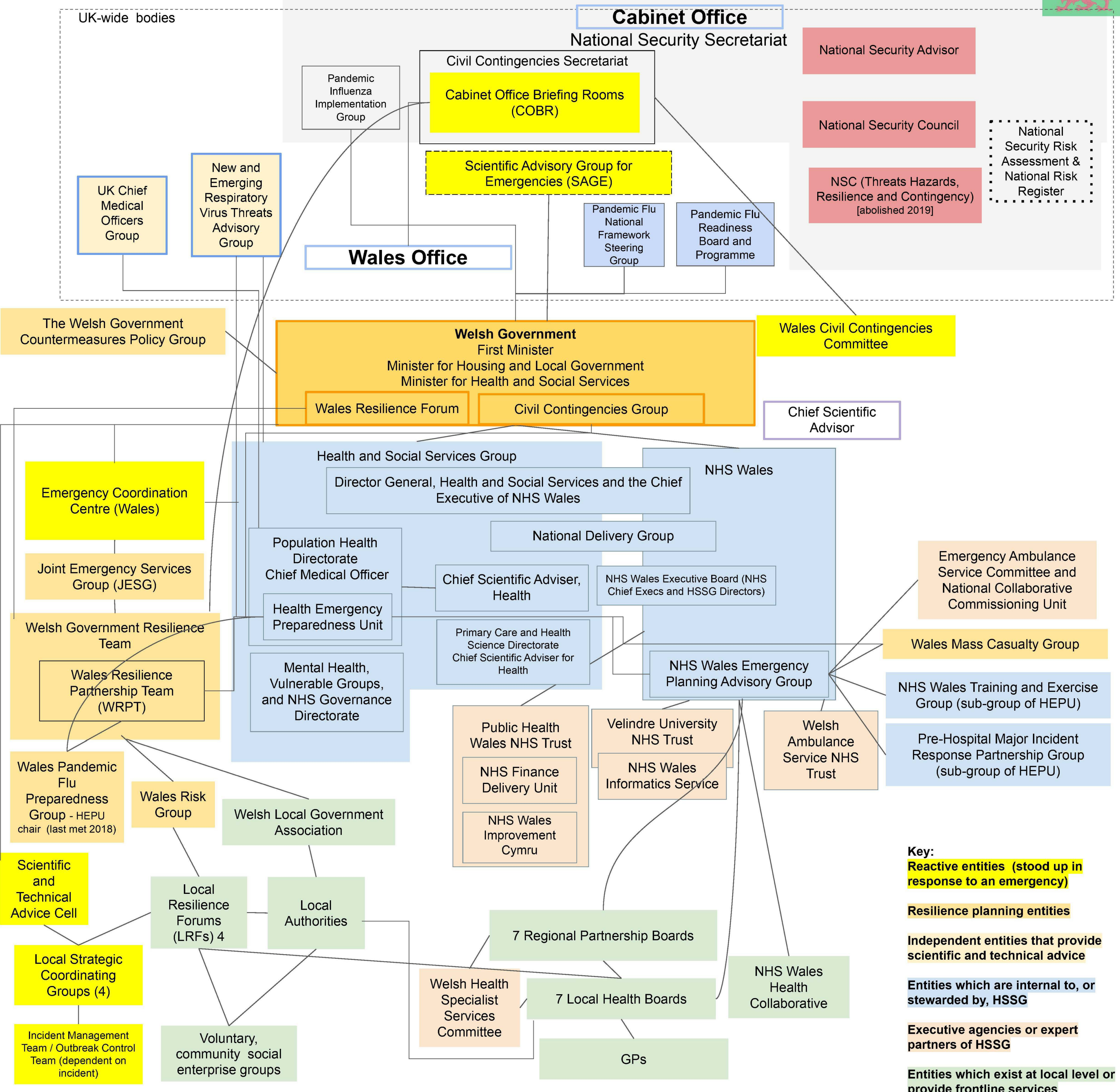


WALES

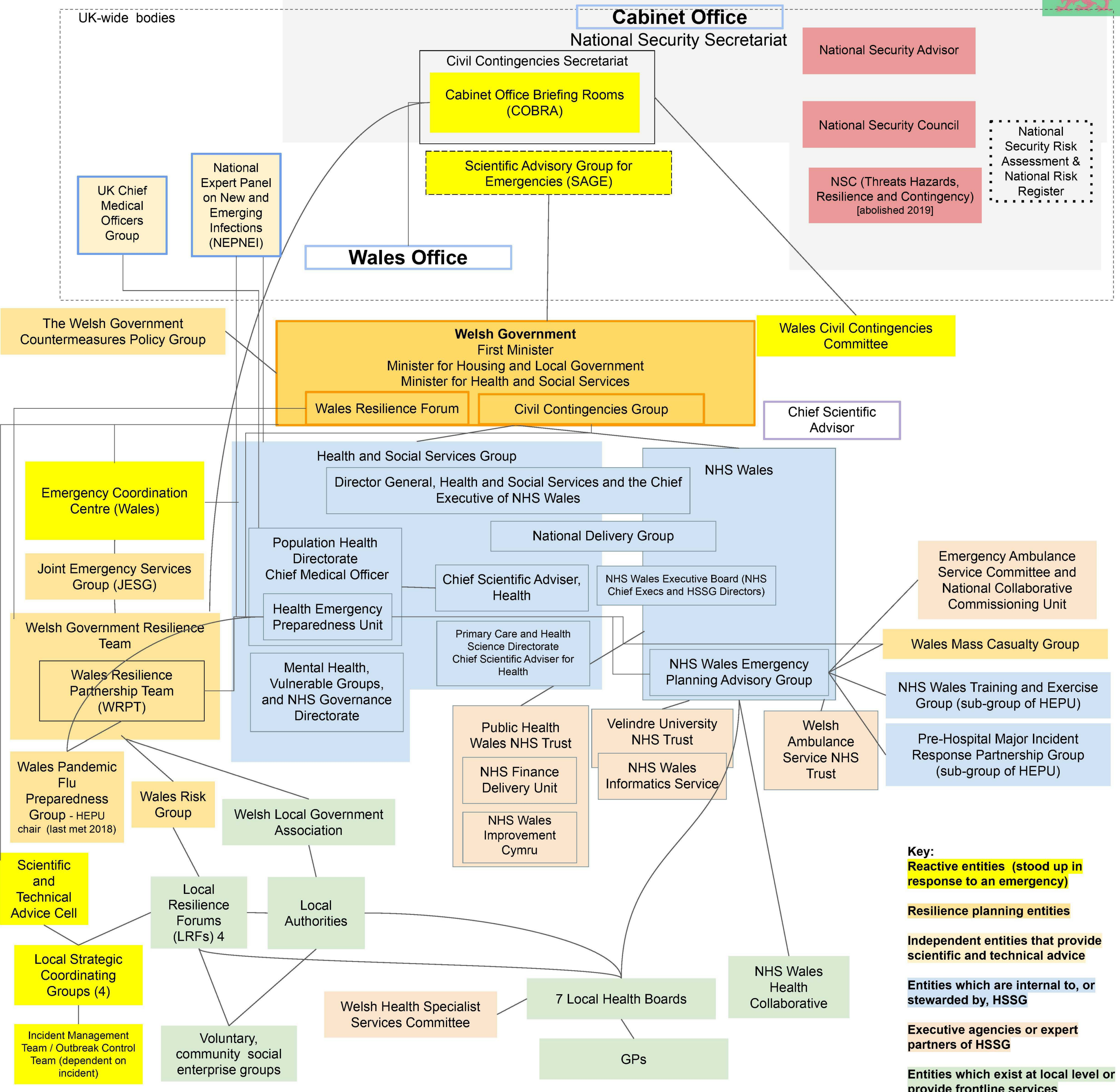
3. Pandemic preparedness and response structures Wales c.2019



3. Pandemic preparedness and response structures Wales c.2017

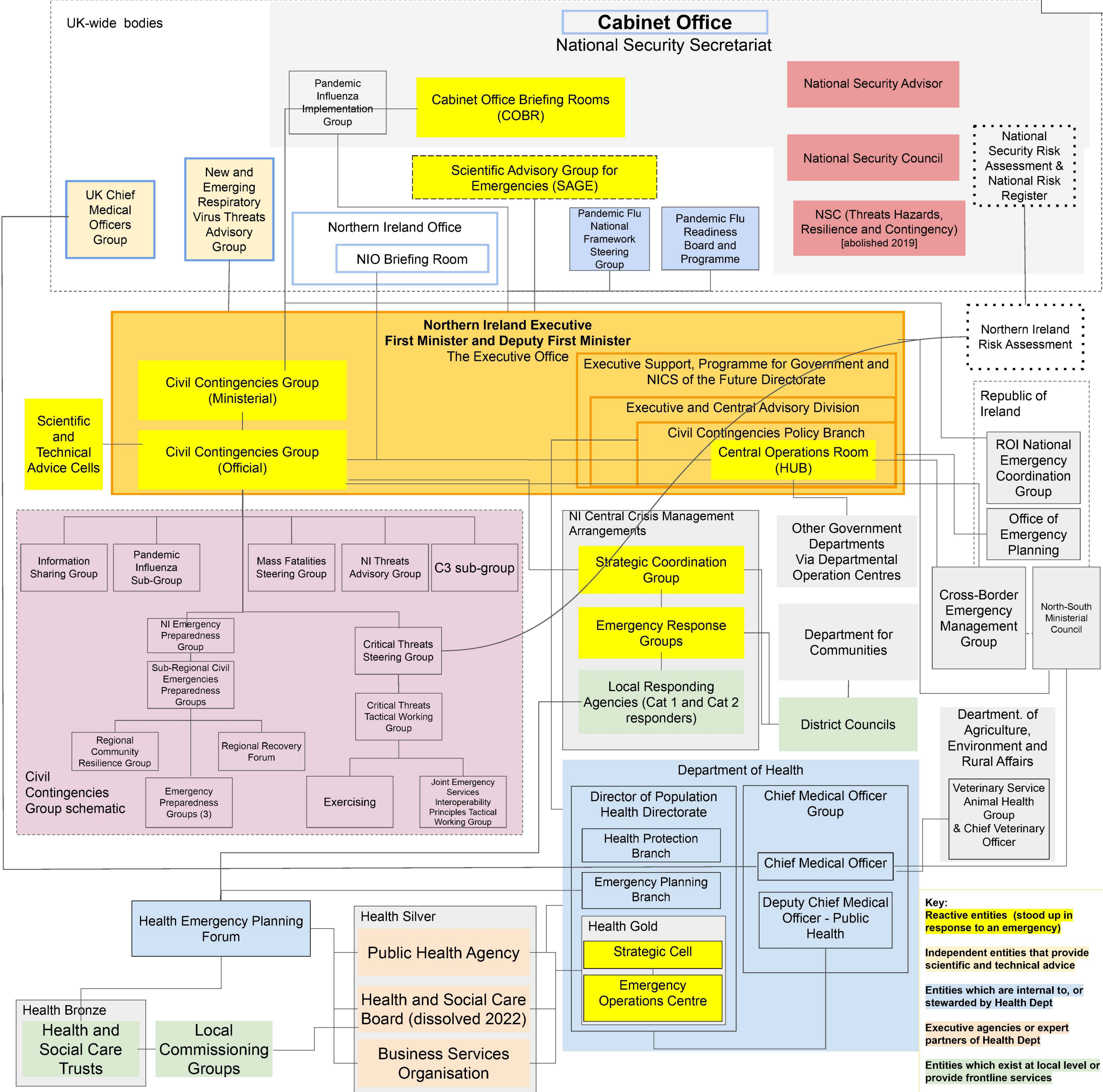


3. Pandemic preparedness and response structures Wales c.2010



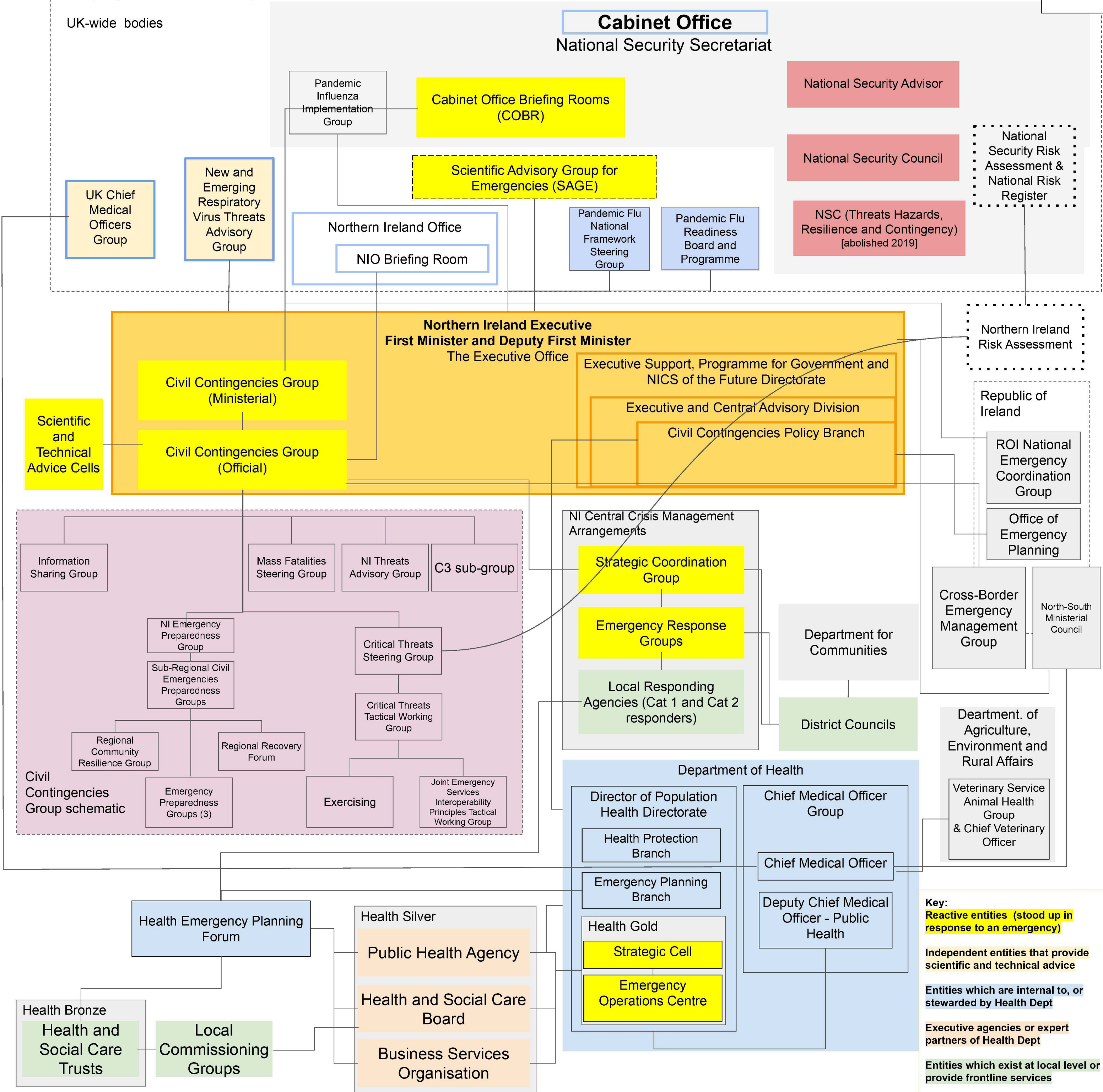
NORTHERN IRELAND

4. Pandemic preparedness and response structures Northern Ireland c.2019



Key:
Reactive entities (stood up in response to an emergency)
 Independent entities that provide scientific and technical advice
 Entities which are internal to, or stewarded by Health Dept
 Executive agencies or expert partners of Health Dept
 Entities which exist at local level or provide frontline services

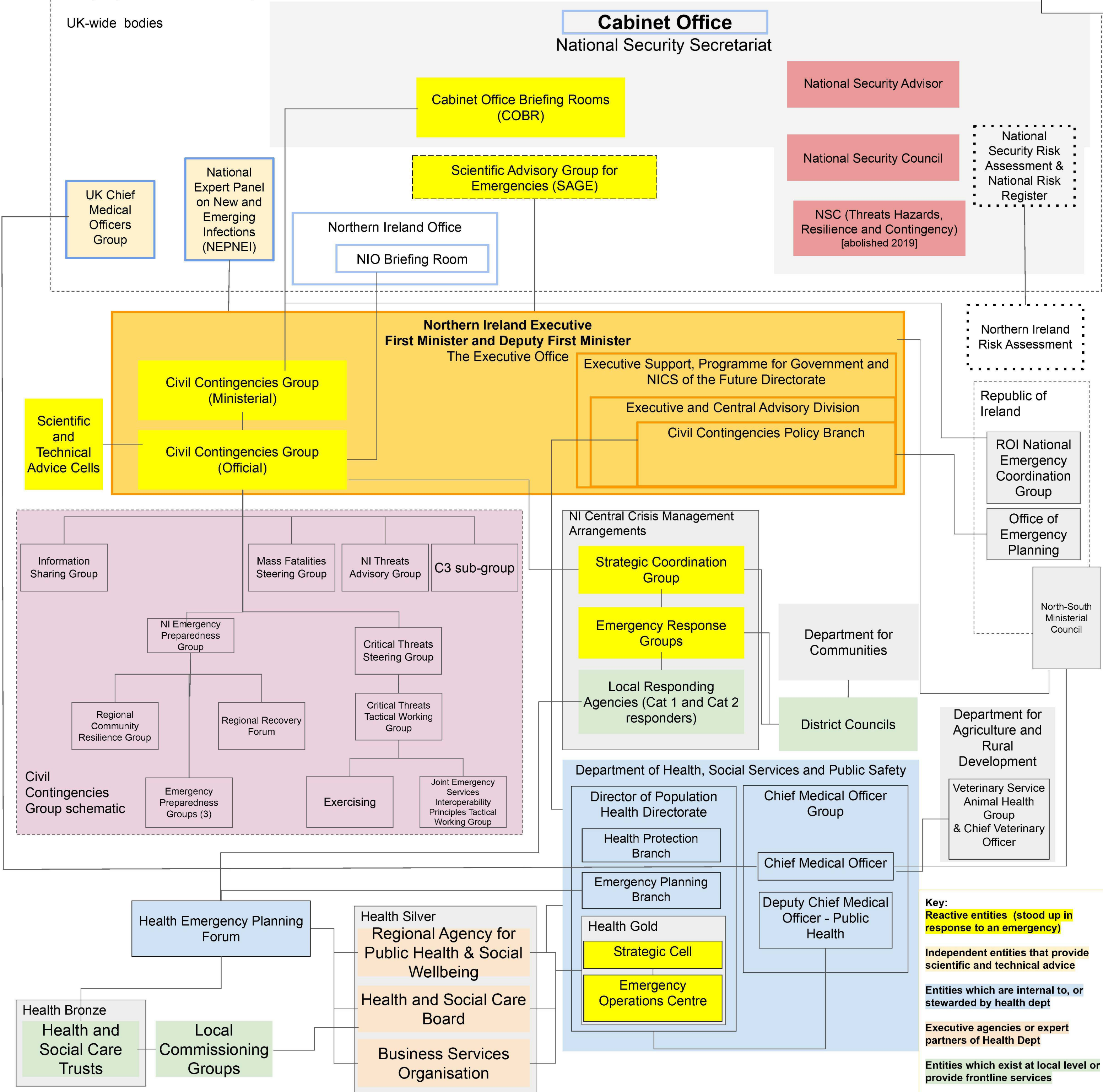
4. Pandemic preparedness and response structures Northern Ireland - c.2017



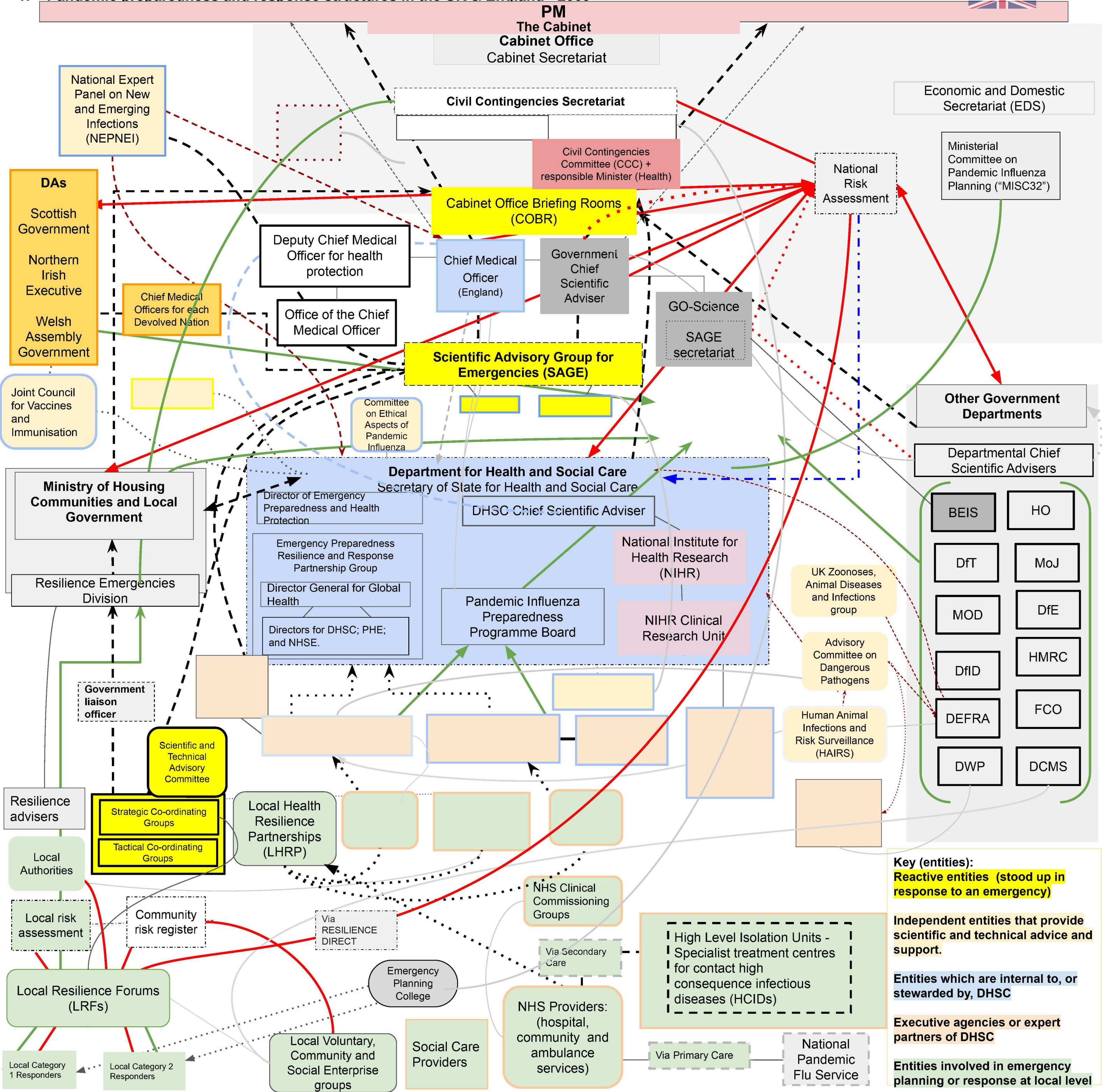
Key:
Reactive entities (stood up in response to an emergency)
 Independent entities that provide scientific and technical advice
 Entities which are internal to, or stewarded by Health Dept
 Executive agencies or expert partners of Health Dept
 Entities which exist at local level or provide frontline services

4. Pandemic preparedness and response structures Northern Ireland c.2010

NI



1. Pandemic preparedness and response structures in the UK & England - 2009



Key (entities):
Reactive entities (stood up in response to an emergency)
Independent entities that provide scientific and technical advice and support.
Entities which are internal to, or stewarded by, DHSC
Executive agencies or expert partners of DHSC
Entities involved in emergency planning or response at local level