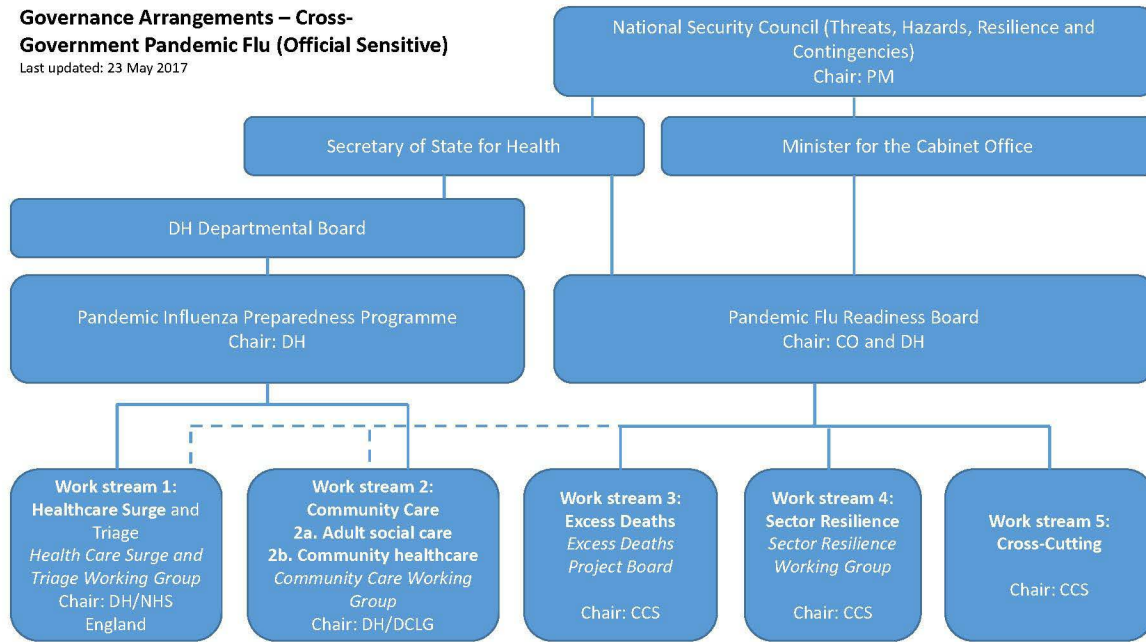


**Governance Arrangements – Cross-Government Pandemic Flu (Official Sensitive)**

Last updated: 23 May 2017



**Governance Arrangements – Pandemic Flu  
(Official Sensitive)**

**Pandemic Flu Readiness Board**

Chair:

Katharine Hammond, CCS and Helen Shirley-Quirk, DH

Members:

Department of Health (Co-Chair), CCS, Cabinet Office (Co-Chair), Public Health England, NHS England, DCLG, MoD, GO-Science, Home Office, HM Treasury, MoJ, DfT, BEIS, DEFRA, HMRC, DfE, DWP, DCMS, FCO, DFID

Other departments and organisations which may be called upon to attend include:  
NHS England, Government Legal Service, Office of the Parliamentary Counsel

Devolved Administrations

Northern Ireland Executive, Scottish Government, Welsh Government

Secretariat:

**Name Redacted** CCS **Name Redacted**@cabinet-office.x.gsi.gov.uk) and **NR** CCS **NR**@cabinet-office.x.gsi.gov.uk)

Meeting Regularity:

Every two months, or as is deemed necessary by the co-chairs.

**Governance Arrangements – Pandemic Flu  
(Official Sensitive)**

**Pandemic Influenza Preparedness Programme (PIPP)**

Chair:

Clara Swinson, DH

Members:

DH, NHS England, Public Health England, Cabinet Office (CCS), DCLG-RED, LGA

Additional members may be invited to provide subject-specific advice:

- DH Comms
- DH Research Programmes

Secretariat:

DH Pan Flu Team NR ([@dh.gsi.gov.uk](mailto:NR@dh.gsi.gov.uk))

Meeting Regularity:

Every six months

**Governance Arrangements – Pandemic Flu  
(Official Sensitive)**

**Health: Surge and Triage Working Group**

Chair:

Kevin Dodds, DH

Members:

Kevin Dodds (DH), [REDACTED] (DH), [REDACTED] (DH), Stephen Groves (NHS England), Chloe Sellwood (NHS England), [REDACTED] (NHS England)

Secretariat:

DH Pan Flu Team

Meeting Regularity:

Every 3-4 weeks

Remit:

- (1) Finalise and socialise surge and triage guidance for the NHS
- (2) Develop analytical triage paper to support decision-making

**Governance Arrangements – Pandemic Flu  
(Official Sensitive)**

**Community Care Working Group**

Chair:

Kevin Dodds, DH and Katherine Richardson, DCLG

Members:

Stuart Wainwright (CCS), Katherine Richardson (DCLG), **NR** (DCLG), Jo Gillespie (DCLG),  
**NR** (DCLG), Kevin Dodds (DH), Ed Moses (DH), **NR** (DH), **NR**  
(DH), **NR** (DH), **NR** (DH), Stephen Groves (NHS England), Chloe Sellwood  
(NHS England), Stephen Groves (NHS England)

Secretariat:

DH Pan Flu Team

Meeting Regularity:

Every 3-4 weeks

Remit:

- (1) Develop plans for how to deal with pressures to the social care system at local, regional and national level.
- (2) Review of existing plans for delivering healthcare outside of a healthcare setting

**Governance Arrangements – Pandemic Flu  
(Official Sensitive)**

**Excess Deaths Project Board**

Chair:

Stuart Wainwright (CCS, Cabinet Office)

Members:

Stuart Wainwright (CCS, Cabinet Office)

NR (CCS, Cabinet Office)

NR (DH)

Katherine Richardson (DCLG)

NR (MoJ – coronial)

NR (MoJ – mass fatalities)

NR (General Register Office)

Name Redacted (CCS, Cabinet Office)

Kevin Dodds (DH)

NR (DH)

Jo Gillespie (DCLG)

NR (MoJ – coronial)

NR (General Register Office)

Secretariat:

NR (CCS, Cabinet Office)

NR @cabinet-office.x.gsi.gov.uk

I&S

Meeting Regularity:

Every 2-3 weeks

Remit:

To ensure that there is sufficient capability in England to manage the volume of deaths during a pandemic in a respectful and acceptable manner

**Governance Arrangements – Pandemic Flu  
(Official Sensitive)**

**Sector Resilience Working Group**

Chair:

CCS - **Name Redacted**

Members:

BEIS, DH, MoJ / HMPS, DfE, DfT, Defra, MOD, Home Office / Border Force, DCMS, Cabinet Office, DCLG, HMT, FCO and DFID

Secretariat:

**NR** CCS, Cabinet Office **NR** [@cabinet-office.x.gsi.gov.uk](mailto:@cabinet-office.x.gsi.gov.uk) **I&S**

Meeting Regularity:

6-8 weeks

Remit:

To ensure that departments are confident that critical sectors have adequate resilience to anticipated levels of employee absence during a pandemic flu outbreak

#### Devolved Administrations Input

- **NR** to add details.